



North Carolina Department of Transportation
Materials and Tests Unit – Product Evaluation Program
Innovative Technologies and Products Awareness Report
June 8th, 2022



PRODUCT INNOVATION – Equal Tile Cast-In-Place Paver

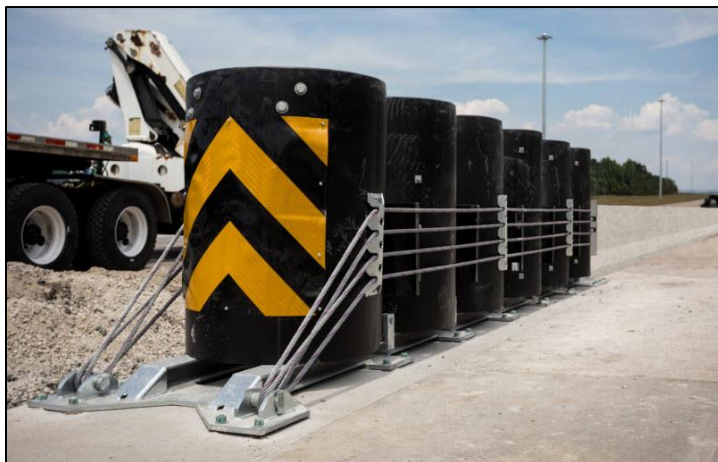


Workers placing an Equal Tile Paver in freshly poured concrete (top), an Equal Tile Paver in finished concrete (bottom) – images from Equal Tile brochure

The Equal Tile Cast-In-Place Paver is manufactured by Advanced Roadway Manufacturing, Inc. out of Orlando, Florida. It is currently approved for use and listed on the Approved Products List (APL) as NP22-9056. The Equal Tile Cast-In-Place Paver is an ADA Detectable Waring Device primarily used for curb ramps near crosswalks. Each Equal Tile Paver has eight, 1.5-inch long metal anchors threaded through it so that the paver embeds into the fresh concrete for enhanced attachment. It is available in a variety of shapes and 10 different colors. For more information, please visit:

<http://www.roadwaymfg.com/>

PRODUCT HIGHLIGHT – REACT™ M



Example of an installed REACT™ M – image from Trinity Highway Products website

The REACT™ M is manufactured by Trinity Highway Products, LLC. out of Addison, Texas. It is currently under evaluation and is listed on the APL as NP21-8957. The REACT™ M is a re-directive, non-gating crash cushion. The product has been shown to provide self-restoring characteristic from impacts within the MASH specified criteria. It is used with various longitudinal highway barriers for unidirectional traffic applications. The REACT™ M is composed of galvanized steel and six HDPE cylinders. It is approximately 22 feet in length, 42 inches wide, 53 inches in height, and is MASH-16 (Manual for Assessing Safety Hardware 2016) Test Level 3 (TL-3) certified. For more information, please visit: <https://trinityhighway.com/product/react-m/>