



North Carolina Department of Transportation
Materials and Tests Unit – Product Evaluation Program
Innovative Technologies and Products Awareness Report
November 3rd, 2021



PRODUCT HIGHLIGHT – Durisol® Lightweight Aluminum Noise Barrier Panel



Cross-section of Durisol® Lightweight Aluminum Noise Barrier Panel – image from Durisol® website

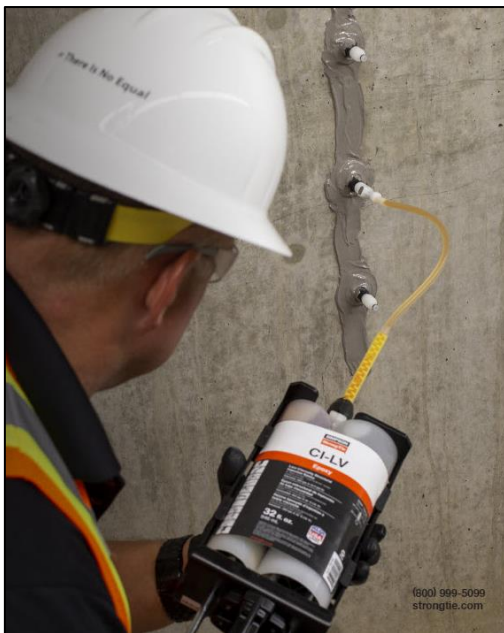
The Durisol® Lightweight Aluminum Noise Barrier Panel is manufactured by Durisol® USA, Inc. out of Rural Hall, North Carolina. It is currently accepted for a field trial and listed on the Approved Products List (APL) as NP21-8876. The Durisol® Lightweight Aluminum Noise Barrier Panels are a lightweight absorptive aluminum noise barrier designed for structure mounted applications. The panels are composed of rock wool, steel posts, and up to 50% recycled aluminum. The Durisol® Lightweight Aluminum Noise Barrier Panel is MASH-2016 (Manual for Assessing Safety Hardware) Test Level 4 (TL-4) compliant (TL-4 equates to a 22,500-pound truck impact at speeds of up to 56 mph). The panels are 5 inches thick, available in lengths of 3 through 16 feet, and are available in either a smooth or perforated finish with a variety of colors. They have a Sound Transmission Loss (STC) rating of 33, and a Noise Reduction Coefficient (NRC) of 0.90 for both sides.

For more information, please visit:
www.durisol.com



Durisol® Lightweight Aluminum Noise Barrier Panel – image from Durisol® website

PRODUCT INNOVATION – Crack Injection Low-Viscosity Structural Injection Epoxy



View of the CI-LV Structural Injection Epoxy being applied with optional injection equipment – image from Simpson Strong-Tie® brochure

The Crack Injection Low-Viscosity (CI-LV) Structural Injection Epoxy is currently manufactured by Simpson Strong-Tie® out of McKinney, Texas. It is currently under evaluation and listed on the APL as NP21-8905. The CI-LV Structural Injection Epoxy is a two-component, high-modulus, high-solids, moisture-tolerant epoxy that is specially designed for pressure injection of concrete cracks and for increasing the bond between freshly placed repair mortars or concrete mixes in load-bearing applications. The CI-LV Structural Injection Epoxy can be applied to either dry or damp surfaces at temperatures of between 40°F and 90°F. This low viscosity version has a lower surface tension that allows the material to effectively penetrate narrow cracks. It is NSF/ANSI-listed safe for potable water applications and is available in either a 32-ounce dual cartridge, or a 3-gallon bulk kit. For more information, please visit:
<https://www.strongtie.com/>