



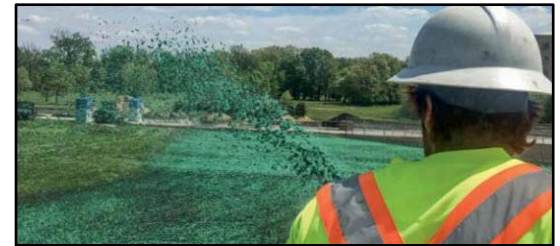
## PRODUCT HIGHLIGHT – Profile® HP Specialty Blend with Tack



Comparison of Traditional vs. Thermally Refined™ fibers – image from Profile® HP Specialty Blend with Tackifier brochure

The Profile® High Performance (HP) Specialty Blend with Tack is manufactured by Profile® Products out of Limestone, Tennessee. It is currently approved for use and listed on the Approved Products List (APL) as NP21-8944. The Profile® HP Specialty Blend with Tack is a hydraulically applied Mulch to control erosion and revegetate mild slopes ( $\leq 3H:1V$ ). The Specialty Blend with Tack is composed of biodegradable cellulose fibers (67%), 100% recycled Thermally Refined™ wood fibers (30%), and a high-viscosity colloidal polysaccharide wetting agent (3%). The Specialty Blend with Tack is mixed at a rate of 60 lbs. of product per 100 gallons of water and is applied at a rate of 2,000 – 2,500 lbs. per acre (depending upon the slope). The Thermally Refined™ wood fibers are modified in a process that creates finer, longer, and more absorbent wood fibers. This leads to fibers with a greater surface area that provides for a higher water-holding capacity.

For more information, please visit:  
[www.profilevs.com/products/](http://www.profilevs.com/products/)



Application of Profile® HP Hydraulic Mulch products – image from Profile® HP Mulch brochure

## PRODUCT INNOVATION – Hercules



View of the Hercules non-gating impact attenuator – image from SMA Road Safety brochure

The Hercules is currently manufactured by Safety Modular Absorber (SMA) Road Safety out of Marcanise, Italy but will be manufactured in Ohio for sales within the United States. It is currently approved for use and listed on the APL as NP21-8875. The Hercules is a 100% steel, re-directive, energy absorbing, non-gating impact attenuator that is impact tested to MASH 2016 (Manual for Assessing Safety Hardware) Test Level 3 (TL-3) standards. The TL-3 approvals are for Medium sized vehicle impacts at speeds up to 62 MPH, and a crash angle of 25 degrees. The Hercules can be attached to both steel and concrete barriers and is repairable after an impact. It is approximately 35 inches high, 19 feet 5 inches long, and either 24 or 32 inches in width (depending upon model). For more information, please visit:

[www.smaroadsafety.com](http://www.smaroadsafety.com)