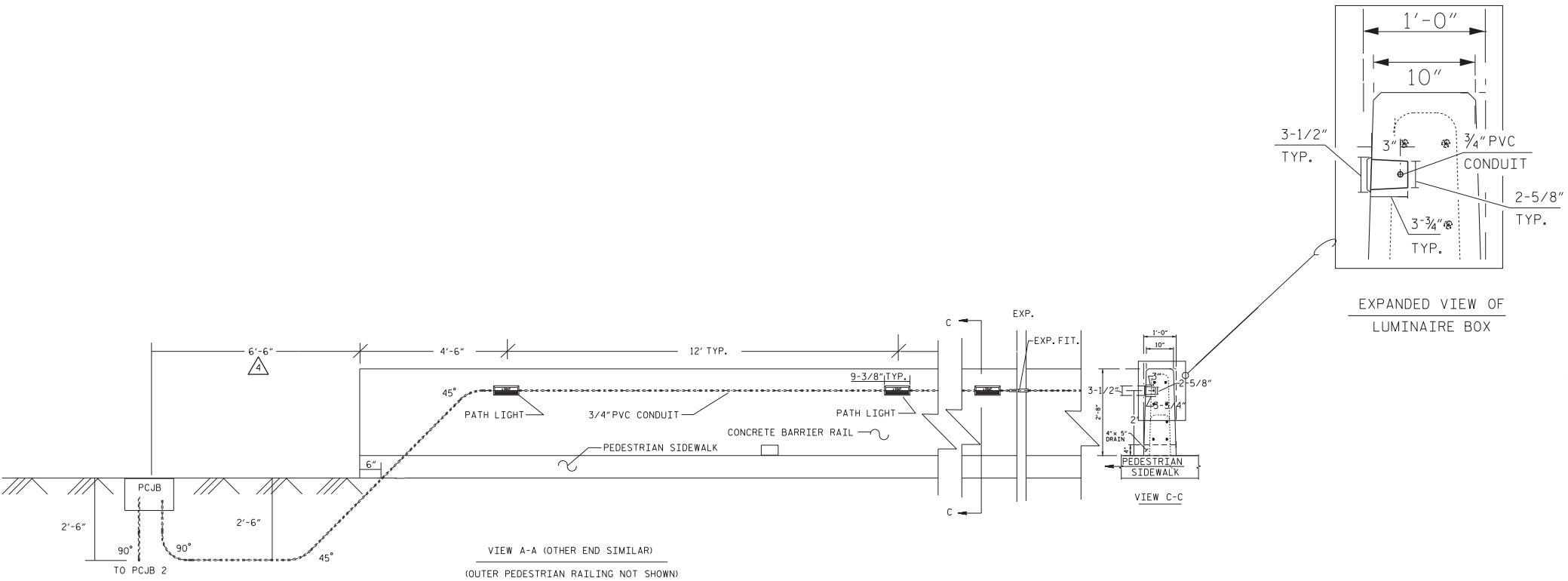


TOWN OF SURF CITY PEDESTRIAN BRIDGE LIGHTING PROJECT

The Pedestrian Bridge Lighting Project covers the replacement of the pedestrian pathway lighting in the concrete barrier rail along the bridge on Highway 210/NC-50 to Surf City.

Existing Fixture Layout (from record drawings)



Fixture space dimensions - Field verified

Louvered faceplate

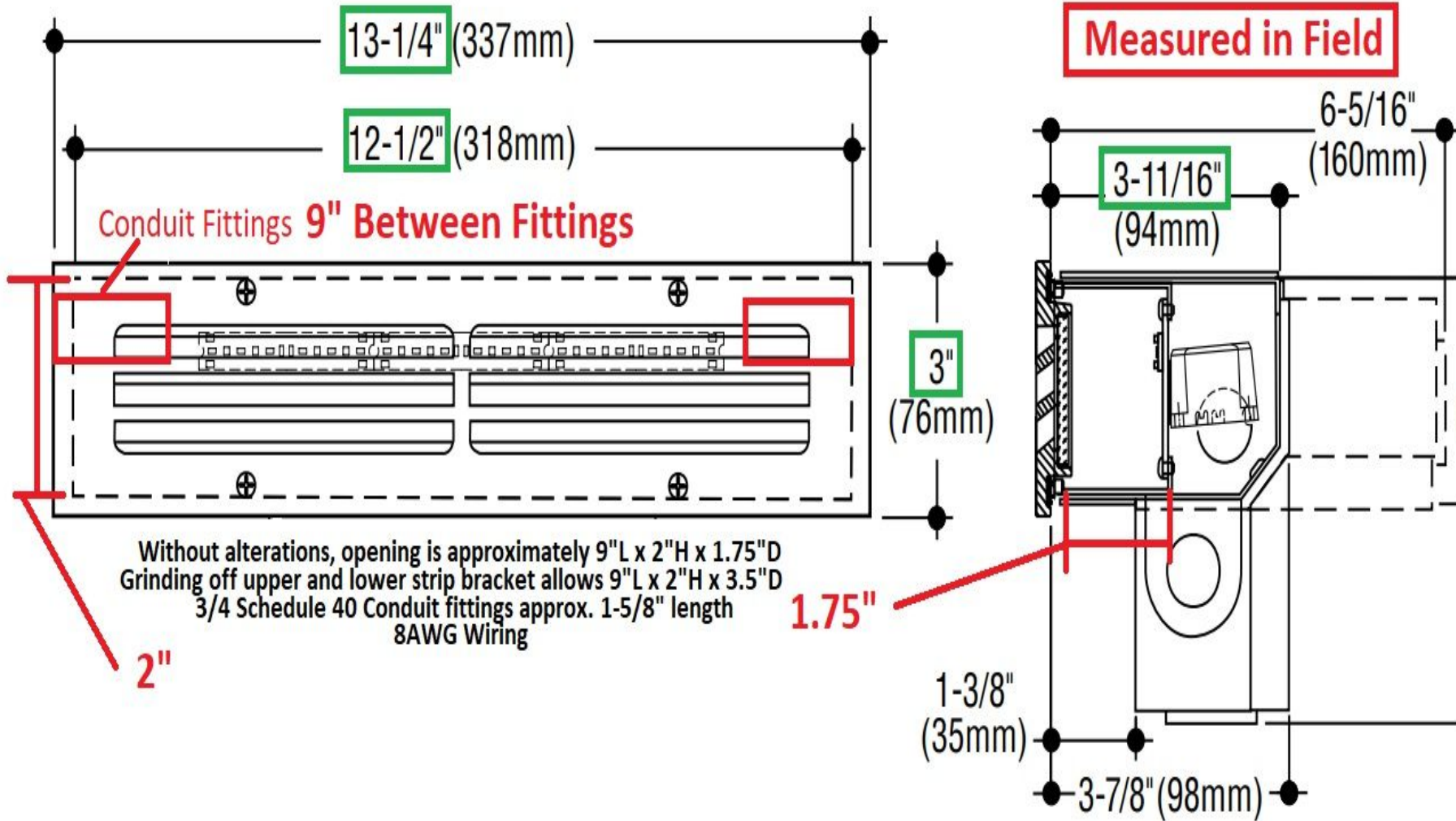


Photo of fixture space

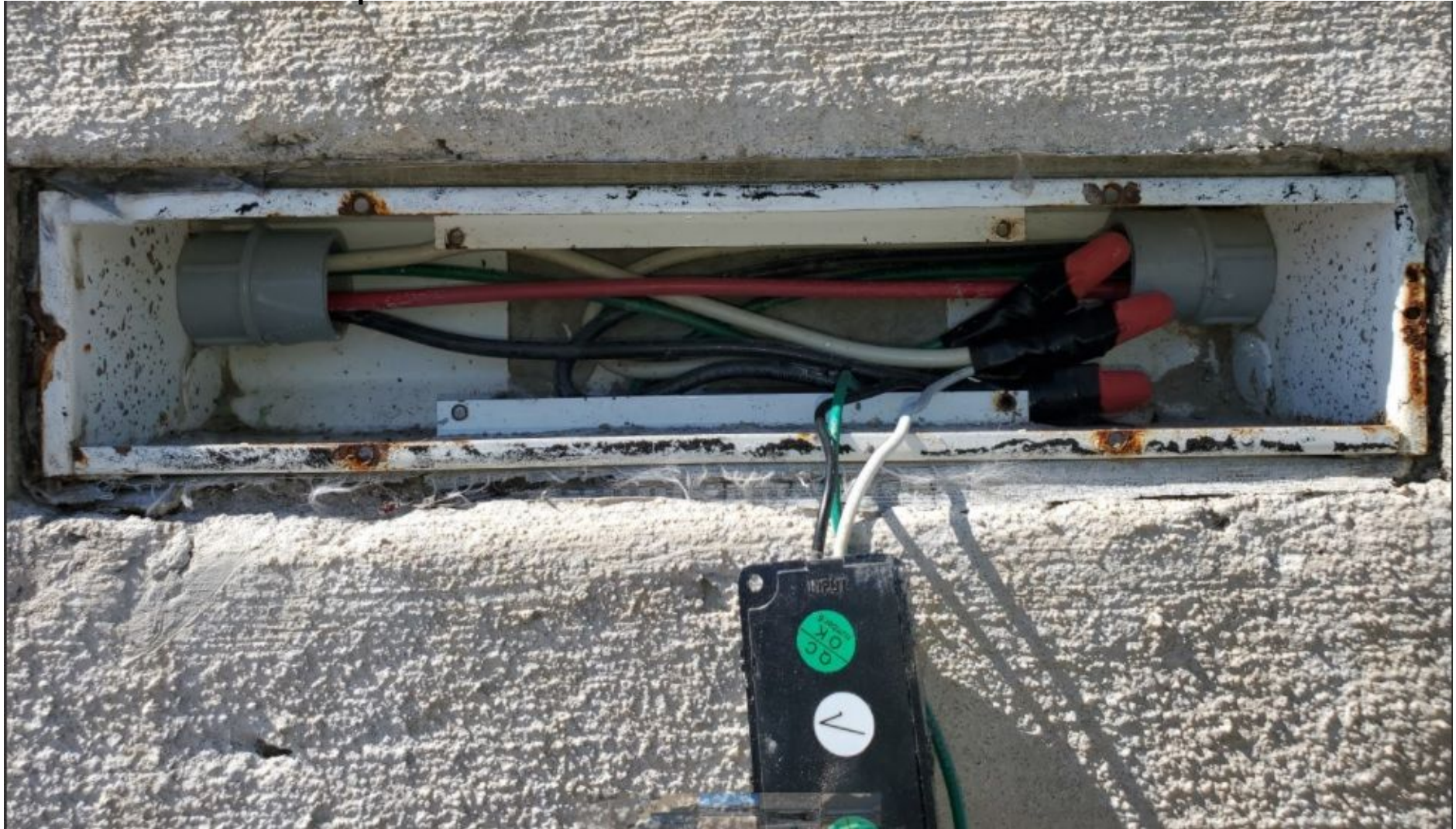


Photo of fixture space



Fixture Information and Requirements:

Existing Fixture is used along pedestrian sidewalk to illuminate the walking path.

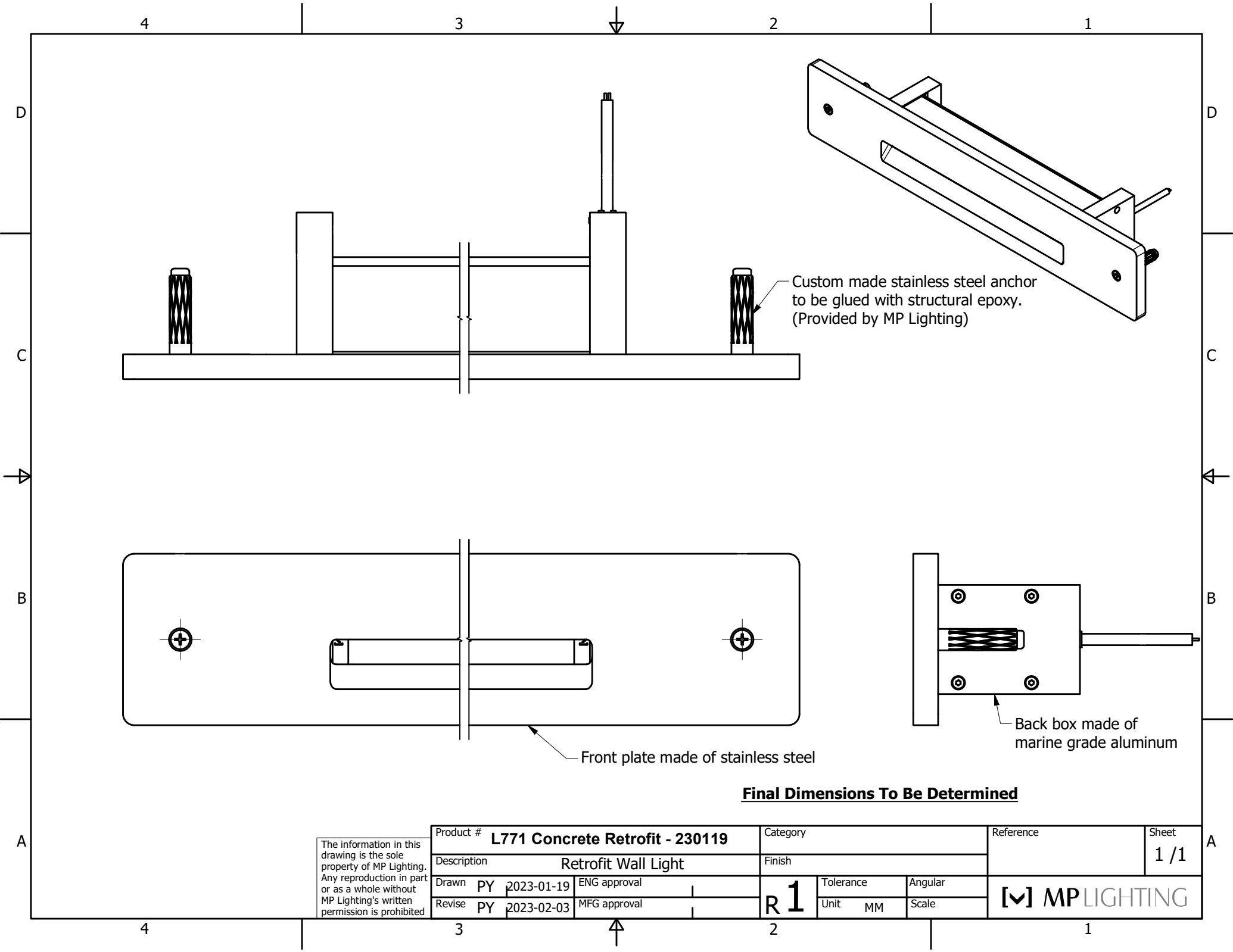
New fixture must be retro-fitted into existing box without modifications.

New fixture must be marine-grade, IP-66 rated.

New fixture must be stainless steel front plate and aluminum back box.

New fixture must have replaceable LED driver and engine.

New fixture parameters: 120V, 8W, 440LM



Custom made stainless steel anchor
to be glued with structural epoxy.
(Provided by MP Lighting)

Front plate made of stainless steel

Back box made of
marine grade aluminum

Final Dimensions To Be Determined

The information in this drawing is the sole property of MP Lighting. Any reproduction in part or as a whole without MP Lighting's written permission is prohibited

Product # L771 Concrete Retrofit - 230119				Category			Reference		Sheet
Description Retrofit Wall Light				Finish					1 / 1
Drawn	PY	2023-01-19	ENG approval	R 1	Tolerance	Angular		[M] MPLIGHTING	
Revise	PY	2023-02-03	MFG approval		Unit	Scale			
					MM				