

NORTH CAROLINA DEPARTMENT OF TRANSPORTATION  
**PROPRIETARY ITEM - CERTIFICATIONS AND FINDING IN THE  
PUBLIC INTEREST (FIPI)**

**INSTRUCTIONS:**

First review [G.S. 133-3](#) to determine if you need to proceed with this form. A specific patented or proprietary material, specification, or process shall not be required on a contract until this proprietary item is approved following this process on NCDOT Projects governed by NC General Statutes §133-3. Use this form to document the proprietary item, host and document the public meeting, complete any investigation required after the public meeting concludes, and obtain approval of the use of a proprietary feature on a project or group of projects. This form shall be filled out by the Engineer of Record who specified the proprietary item and can evaluate the items proposed at a public meeting. The Engineer of Record shall be a registered professional engineer licensed by the state of North Carolina.

**BEFORE PUBLIC MEETING:**

**NAME OF PROPRIETARY ITEM OR PROCESS:**

Holophane 16' Pedestrian Light Fixture and Aluminum Pole utilizing SiteLink Track System (also matches lights previously installed). All primary components are aluminum.

Also Holophane 25' Street Light fixture to match Pedestrian lights with the same, arm, light fixture and controls. All primary components are aluminum.

SIDE WALK 1 ASSY10845

GlasWerks® Prismatic LED Hallbrook®, P60 performance package, 4000K, 120-277V, Type 3 asymmetric bowl glass and door, Quick stem mount, Black, Field adjustable lumen output, Bishop's Crook, 30IN, Single arm, Tenon mount, Quick stem mount, Black, Salem aluminum pole, 14FT, Shaft, Sitelink 4.50" fluted, .156 wall (L4E), 13IN Base, Square Pattern Bolt Circle, 3 x 6 tenon, Black, Anchor bolt (galvanized steel), Receptacle with wet location with closed cover, Black, Banner arm, 24IN, Single arm, Bolt-on, Shaft, Sitelink 4.50" fluted, .156 wall (L4E), Half sphere, .75 SCH pipe (1.05" actual), Black, Banner arm, 24IN, Single arm, Bolt-on, Shaft, Sitelink 4.50" fluted, .156 wall (L4E), Half sphere, .75 SCH pipe (1.05" actual), Black

BIKE PATH 1 TSG013225

GlasWerks® Prismatic LED Hallbrook®, P60 performance package, 4000K, 120-277V, Type 3 asymmetric bowl glass and door, Quick stem mount, Black, Field adjustable lumen output, 25' Round tapered aluminum pole, 8' Diameter base tapered to 4.4" and .156 wall, black finish and 3 1/2" by 8" tenon. 45" OUC Single arm with black finish for 3 1/2" by 8" tenon mount, Ball style arm fitter for Quick stem mount with black finish, Anchor bolt (galvanized steel), Receptacle with wet location with closed cover, Black, Banner arm, 24IN, Single arm, Bolt-on, Shaft, Sitelink

**MANUFACTURER NAME, ADDRESS & PHONE NUMBER:**

Holophane, a division of Acuity Brands  
Steve Fowler, account representative  
919-538-0877  
Steven.Fowler@holophane.com

**LOCATION OF USE (INCLUDE PROJECT NO. AND COUNTY):**

NCDOT/FHWA Project #HL-0009  
Pembroke Transportation Investment for Revitalization  
Town of Pembroke, Robeson County, North Carolina  
Location: from Vance Street to Jones St on Third, and from Third to Second Streets on Main Street and Union Chapel Road.

**JUSTIFICATION (Justification consists of information that documents the reasons marked above for use of the proprietary item or process. Attach additional pages and documentation as necessary.):**

This system is particularly well-suited for use on downtown streets where there is often a wide (and changing) variety of attachments such as traffic lights, pedestrian walk lights, street signs, banners, power outlets, regulatory or wayfinding signs, speakers, security cameras, and so on. It also organizes all uses and attaches them to the pole in a manner that maximizes possible uses and minimizes the need for metal straps, clamps, or other improvised attachments.

This system also has four channels in addition to the central channel that allows separation between feeds for items such as traffic lights, speakers, and security cameras while providing additional channels for other uses, such as cell antennas and even irrigation tubing for hanging plants.

Also because of the design of the aluminum shaft with the discreet additional channels, this pole exceeds the strength of regular fluted and round poles in aluminum, cast iron or steel.

**SUPPORTING DOCUMENTS (Include each Document Name with summary of what is included in that document listed):**

SiteLink Revolutionary Track System explains the system and how it works.

Link: [https://img.acuitybrands.com/public-assets/catalog/1313606/hl\\_5104\\_sitelink-brochure.pdf?abl\\_version=05%2F05%2F2021+13:14:40&DOC\\_Type=Brochures&forceBehavior=open](https://img.acuitybrands.com/public-assets/catalog/1313606/hl_5104_sitelink-brochure.pdf?abl_version=05%2F05%2F2021+13:14:40&DOC_Type=Brochures&forceBehavior=open)

**CONTACT INFORMATION (include Engineer of Record and Stakeholder(s) (if applicable), listing organization, name, address, phone number, and email address):**

<p><b>ENGINEER OF RECORD:</b> The Wooten Company, Lester Lowe, 120 N Boylan Ave., Raleigh, NC 27603, 919-828-0531, llowe@thewootencompany.com</p> <p><b>OTHER STAKEHOLDER(S):</b> Regeneration by Design, Allison Platt, 203 N Slocumb St, Goldsboro, NC 27530, 410-961-7761, allison@regenerationbydesign.com</p>
--

**PUBLIC MEETING DETAILS (include Date, Time, and Virtual Meeting Link):**

<b>Date:</b>	
<b>Time:</b>	
<b>Virtual Meeting Link:</b>	

Please submit any alternatives to the Engineer of Record prior to the public meeting, using the next page of this document.

**DURING PUBLIC MEETING & ALTERNATIVE SUBMITTAL PRIOR TO PUBLIC MEETING:**

**MANUFACTURER NAME, ADDRESS & PHONE NUMBER, PRODUCT DISCUSSED:**

--

**PRODUCT DISCUSSED JUSTIFICATION (Justification consists of information that documents the reasons marked above for use of the proprietary item or process. Attach additional pages and documentation as necessary.):**

**Supporting Documents (Include for each product discussed each Document Name with summary of what is included in that document listed, i.e., data to support justification):**

**DURING PUBLIC MEETING:**

**ATTENDANCE AT PUBLIC MEETING (Include Name, Representing Organization, Contact information (Email/Phone Number)):**

**MANUFACTURER NAME, ADDRESS & PHONE NUMBER, PRODUCT APPROVED AT MEETING (if applicable):**

**JUSTIFICATION FOR PRODUCT APPROVED AT MEETING (if applicable):**

**AFTER PUBLIC MEETING:**

**MANUFACTURER NAME, ADDRESS & PHONE NUMBER, PRODUCT APPROVED:**

**JUSTIFICATION FOR PRODUCT APPROVED:**

**MANUFACTURER NAME, ADDRESS & PHONE NUMBER, PRODUCT DISAPPROVED:**

**JUSTIFICATION FOR PRODUCT DISAPPROVED:**

**SIGNATURES:**

**ENGINEER OF RECORD SIGNATURE:**

Name: \_\_\_\_\_

Title: \_\_\_\_\_

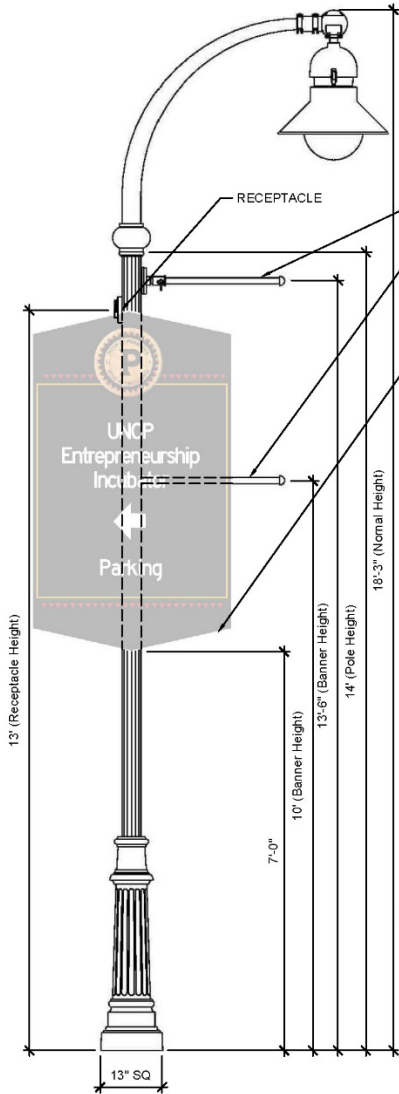
Signature: \_\_\_\_\_ Date: \_\_\_\_\_

**STAKEHOLDERS SIGNATURE (if applicable):**

Name: \_\_\_\_\_

Title: \_\_\_\_\_

Signature: \_\_\_\_\_ Date: \_\_\_\_\_



RECEPTACLE

BANNER / BANNER ARMS & WEATHERPROOF RECEPTACLE

POLES WITH WAY-FINDING SIGNS HAVE NO BANNER ARMS. BOTTOM OF SIGN WILL BE 7" FROM GROUND LEVEL

**POLE SPECIFICATIONS:**

**MANUFACTURER**  
HOLOPHANE  
SALEM SERIES  
SMA 14 SL4 13S C06 BK  
ABG RP156A - (OR  
BUY AMERICA EQUIVALENT)

**MATERIAL**  
ALUMINUM

**STYLE**  
(SL4) SHAFT, SITELINK 4.5"  
FLUTED .156 WALL (L4E)

**HEIGHT**  
14'

**BANNER ARMS**  
2 BANNER ARMS,  
24IN SINGLE ARM  
BOLT-ON HALF, .75 SCH PIPE

**FINISH**  
BLACK

**BASE**  
13 = 13" SQUARE PATTERN  
BOLT CIRCLE (TMP - 89)  
W/ 3" x 6" TENON

**RECEPTACLE**  
W/ WET LOCATION CLOSED  
COVER

**ARM**  
OUC DECORATIVE ROADWAY  
45IN, SINGLE ARM

**FINISH**  
BLACK

**MOUNTING**  
ABG = ANCHOR BOLTS  
GALVANIZED STEEL

**FINISH**  
BK = BLACK

**LIGHT FIXTURE**

**MANUFACTURER**  
HOLOPHANE  
GLASWERKS PRISMATIC LED  
HALLBROOK  
CATALOG# TSG013251  
SEE SPECS FORM COMPLETE  
PRODUCT INFORMATION

**COVER STYLE**  
GSLB3 = GLASWERKS  
PRISMATIC LED  
HALLBROOK

**P60 PERFORMANCE PACKAGE**

**COLOR TEMP.**  
40K = 4000K

**VOLTAGE**  
AS = AUTO-SENSING  
120 - 277V

**MOUNTING STYLE**  
(QSM) QUICK STEM MOUNT

**COLOR**  
B = BLACK

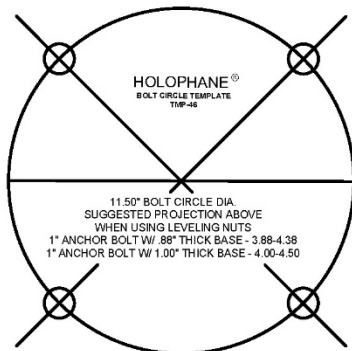
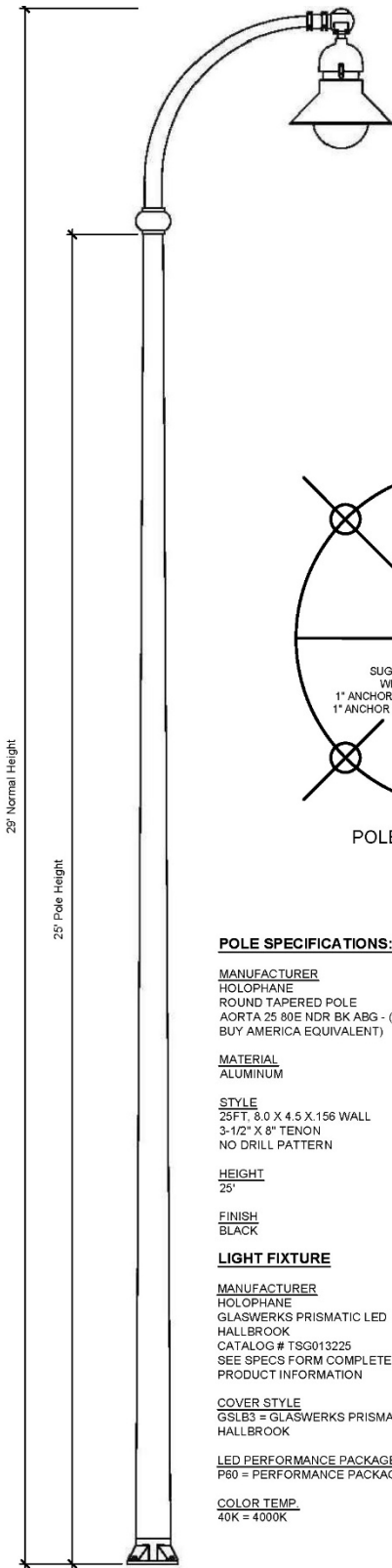
**OPTICS**  
TYPE 3 ASYMMETIC BOWL  
GLASS & DOOR  
FIELD ADJUSTABLE LUMEN  
OUTPUT

**CONTACT:**  
STEVEN FOWLER  
HOLOPHANE SALES CHANNEL  
ACUITY BRANDS LIGHTING, INC  
P: 1.919.538.0877

**2** PEDESTRIAN LIGHTS  
L2.4 ELEVATION & PLAN

1/2" = 1'-0"





POLE BASE MOUNT

**POLE SPECIFICATIONS:**

<b>MANUFACTURER</b> HOLOPHANE ROUND TAPERED POLE AORTA 25 80E NDR BK ABG - (OR BUY AMERICA EQUIVALENT)	<b>BASE</b> 8" DIA. BASE TAPERED TO 4.4" AND .156 WALL THICKNESS
<b>MATERIAL</b> ALUMINUM	<b>ARM</b> OUC DECORATIVE ROADWAY SINGLE ARM TENON MOUNT BLACK FINISH
<b>STYLE</b> 25FT, 8.0 X 4.5 X .156 WALL 3-1/2" X 8" TENON NO DRILL PATTERN	<b>MOUNTING</b> SET OF 1"x3/16"x4" ANCHOR BOLTS
<b>HEIGHT</b> 25'	<b>FINISH</b> BK = BLACK
<b>FINISH</b> BLACK	
<b>LIGHT FIXTURE</b>	<b>VOLTAGE</b> AS = AUTO-SENSING 120 - 277V
<b>MANUFACTURER</b> HOLOPHANE GLASWERKS PRISMATIC LED HALLBROOK CATALOG # TSG013225 SEE SPECS FORM COMPLETE PRODUCT INFORMATION	<b>MOUNTING STYLE</b> (GSM) QUICK STEM MOUNT
<b>COVER STYLE</b> GSLB3 = GLASWERKS PRISMATIC LED HALLBROOK	<b>COLOR</b> B = BLACK
<b>LED PERFORMANCE PACKAGE</b> P80 = PERFORMANCE PACKAGE	<b>OPTICS</b> (BG3) TYPE 3 ASYMMETIC BOWL GLASS & DOOR FIELD ADJUSTABLE LUMEN OUTPUT
<b>COLOR TEMP</b> 40K = 4000K	<b>CONTACT:</b> STEVEN FOWLER HOLOPHANE SALES CHANNEL ACUITY BRANDS LIGHTING, INC P: 1.919.538.0877

**3** STREET LIGHT POLE  
L6.6 ELEVATION & PLAN

1/2" = 1'-0"