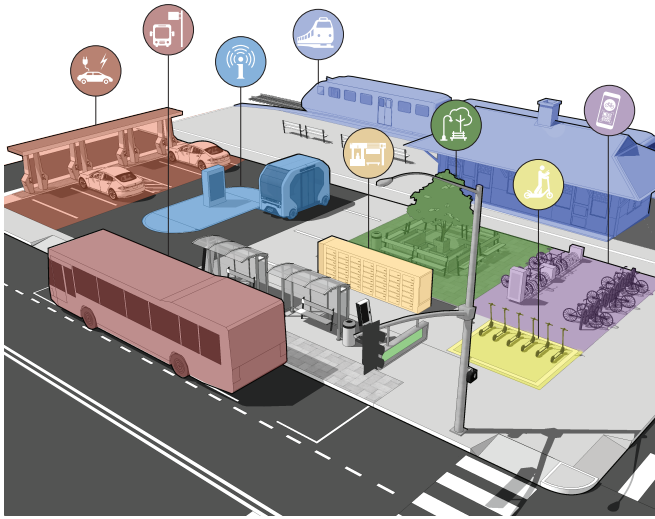


Project Snapshot

Safer, cleaner, equitable, generational change



The **North Carolina Regional S-Line Mobility Hub Plan** (“Mobility Hub Plan”) will advance regional multimodal transportation along the S-Line Rail Corridor in central and eastern North Carolina – enhancing mobility options, improving social equity, increasing the resilience of the transportation network, improving the environment and spurring economic growth. This project will advance the planning and design for hubs in seven North Carolina communities, which evolved from extensive partnerships along the S-Line corridor.

These hubs will transform the connectivity, innovation, growth, and overall vibrancy of not only the rural communities along the corridor, but the entire region. Communities will see immediate positive impacts, independent of the S-Line rail project, and will be set to optimize accommodation of future service.

The **S-Line** is a 95-mile rail corridor in North Carolina that is the missing link within the greater Southeast Corridor. Together, municipalities and regional and local partners are working to achieve a multimodal and resilient transit corridor that advances transformational, nationally significant passenger rail service.

Project Alignment with Merit Criteria



SAFETY

Lessens vehicular travel and reduces vehicular crashes, injuries, and fatalities



SUSTAINABILITY

Reduces vehicular travel and travel time, reducing carbon emissions



QUALITY OF LIFE

Provides more equitable transportation options and reduces reliance and burden of vehicular ownership and travel



INCREASED MOBILITY

Enhances community connectivity via multimodal transportation options



ECONOMIC COMPETITIVENESS

Increases affordable transportation options while creating opportunities for economic investment



STATE OF GOOD REPAIR

Supports development opportunities, public-private partnerships, and long-term maintenance options



INNOVATION

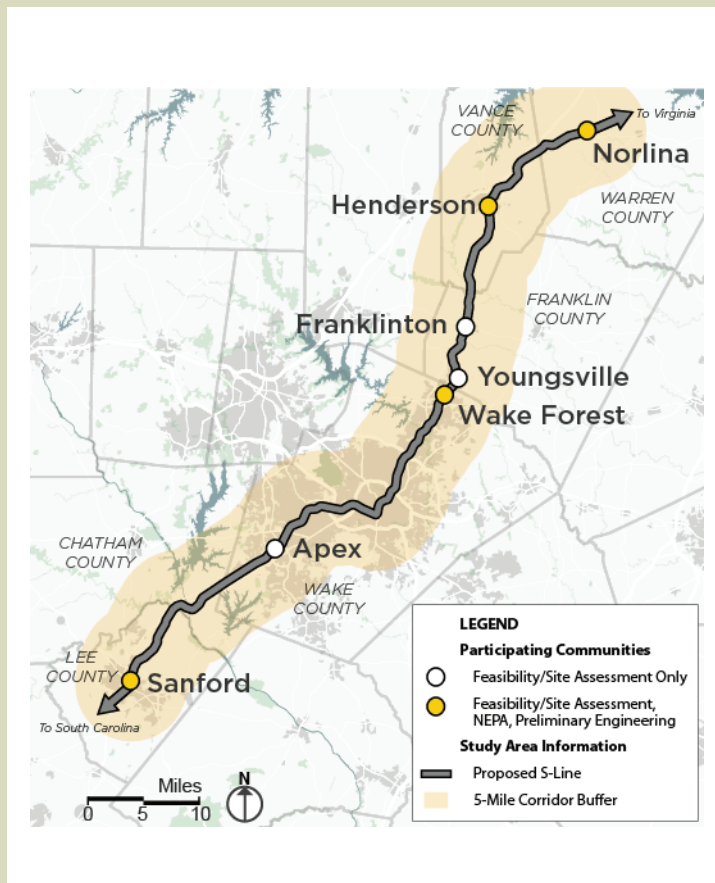
Creates an accessible, holistic, user-friendly transportation experience tailored to each community – from origin to destination



PARTNERSHIP

Joins NCDOT, regional transportation agencies, and seven communities with local financial support

For more information go to <https://connect.ncdot.gov/resources/RAISE-S-Line/Pages/default.aspx>



Location: 7 North Carolina communities along the S-Line

Estimated Completion: December 2024

888,000 residents live in the study corridor (336,000 new residents since 2000)

Local Match: \$850,000 (20%)

RAISE Funding: \$3.4 million (80%)

Total Project Cost: \$4.25 million

5 of the 7 communities identify as Transportation Disadvantaged Communities

Clear and significant benefits

- ✓ Immediately and easily implementable with low cost and high return
- ✓ Connections of key rural and urban communities
- ✓ Community buy-in & partnerships
- ✓ Sustainable growth for a rapidly growing region in desperate need of alternative transportation enhancement
- ✓ Unique regional approach that maximizes connections and access
- ✓ Readiness of the region for innovative multimodal transportation investment
- ✓ Support for historically disadvantaged populations
- ✓ Advances transformational, nationally significant, passenger rail service