

US 29 from I-40 to Urban Loop 2016-2020 crash analysis

1. Number of crash by severity per year

Crash Severity	2016	2017	2018	2019	2020	Total	%
Killed	4	1	7	3	2	17	0.97%
A Type Injury	0	1	0	1	2	4	0.23%
B Type Injury	16	13	22	15	12	78	4.43%
C Type Injury	138	113	162	107	116	636	36.16%
O No Injury	204	192	213	205	173	987	56.11%
Unknown	0	6	9	12	10	37	2.10%
Total	362	326	413	343	315	1759	100.00%

2. Number of fatality by ethnicity

Ethnicity	Fatality
Black	9
Hispanic	1
White	4
Total	14

3. Number of crash by key factors per severity

Crash Severity	Speeding	Run off road	Angle	Inattent on	Rear end	Alcohol related	Drug related
Killed	6	7	2	1	3	2	0
A Type Injury	2	0	0	0	2	2	0
B Type Injury	39	11	12	8	19	4	1
C Type Injury	332	72	55	62	301	16	2
O No Injury	413	128	77	109	363	19	2
Unknown	12	17	1	4	0	0	0
Total	804	235	147	184	688	43	5
% of total crash	45.71%	13.36%	8.36%	10.46%	39.11%	2.44%	0.28%

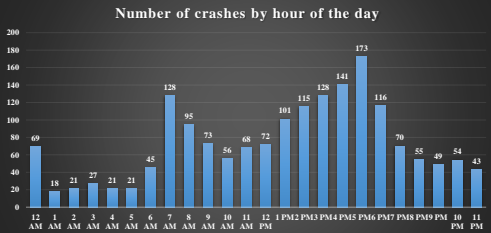
4. Number of pedestrians crashes by severity

Killed	4
A Type Injury	2
B Type Injury	2
C Type Injury	4
O No Injury	1
Unknown	2
Total	13

5. Number of crashes by hour of the day

Hour of the day	Killed	Type Inju	Type Inju	Type Inju	No Inju	unknow	Total
12 AM	0	0	3	21	44	1	69
1 AM	1	0	1	8	7	1	18
2 AM	0	0	3	5	10	3	21
3 AM	1	0	2	9	11	4	27
4 AM	1	0	1	5	10	4	21
5 AM	1	0	0	7	12	1	21
6 AM	0	0	1	22	22	0	45
7 AM	1	0	7	54	65	1	128
8 AM	0	0	7	36	52	0	95
9 AM	0	0	3	36	33	1	73
10 AM	1	0	2	20	31	2	56
11 AM	2	0	4	24	37	1	68
12 PM	0	0	2	21	48	1	72
1 PM	0	1	4	29	64	3	101
2 PM	1	0	1	38	75	0	115
3 PM	0	1	4	48	72	3	128
4 PM	1	0	5	51	84	0	141
5 PM	2	0	5	64	102	0	173
6 PM	0	1	4	39	70	2	116
7 PM	1	0	7	28	33	1	70
8 PM	1	0	4	17	32	1	55
9 PM	1	1	1	18	28	0	49
10 PM	1	0	5	18	26	4	54
11 PM	1	0	2	18	19	3	43
Grand Total	17	4	78	636	987	37	1759

Note: Number of crashes within 12 AM hour could be off since it takes the empty hour cells of the raw data into this group.



US 29 from I-40 to Urban Loop 2017-2021 crash analysis

1. Number of crash by severity per year

Crash Severity	2017	2018	2019	2020	2021	Total	%
Killed	1	7	3	2	3	16	0.88%
A Type Injury	1	1	1	2	2	6	0.33%
B Type Injury	13	21	15	11	22	82	4.50%
C Type Injury	113	161	107	116	159	656	35.96%
O No Injury	192	215	205	172	231	1015	55.65%
Unknown	6	9	12	10	12	49	2.69%
Total	326	413	343	313	429	1824	100.00%

5-Year Avg
3.2

2. Number of fatality by ethnicity

Ethnicity	Fatality
Black	9
Hispanic	1
White	4
Total	14

3. Number of crash by key factors per severity

Crash Severity	Speeding	Run off road	Angle	Inattent on	Rear end	Alcohol related	Drug related
Killed	7	8	2	1	2	2	0
A Type Injury	4	0	0	0	3	2	0
B Type Injury	42	10	11	6	21	5	1
C Type Injury	329	84	47	46	317	16	2
O No Injury	462	146	85	86	369	25	1
Unknown	21	24	2	4	1	0	0
Total	865	272	147	143	713	52	4
% of total crash	47.42%	14.91%	8.06%	7.84%	39.09%	2.85%	0.22%

4. Number of pedestrians crashes by severity

Killed	3
A Type Injury	0
B Type Injury	1
C Type Injury	4
O No Injury	2
Unknown	2
Total	12

Hour of the day	Killed	Type Inju	Type Inju	Type Inju	No Inju	unknow	Total
12 AM	0	0	1	11	22	1	35
1 AM	0	0	1	7	6	1	15
2 AM	0	0	2	9	11	3	25
3 AM	0	0	3	6	13	5	27
4 AM	0	0	2	8	7	4	23
5 AM	1	0	1	7	11	2	22
6 AM	0	1	2	28	28	0	59
7 AM	1	0	6	53	61	1	122
8 AM	0	0	8	35	44	1	88
9 AM	1	0	4	36	36	1	77
10 AM	1	0	2	22	38	3	66
11 AM	1	1	4	26	36	2	70
12 PM	0	0	1	28	54	1	84
1 PM	0	1	5	29	73	3	111
2 PM	1	0	2	48	72	1	124
3 PM	0	1	6	53	76	5	141
4 PM	1	0	5	47	89	1	143
5 PM	2	0	3	70	111	0	186
6 PM	1	1	4	35	74	4	119
7 PM	1	0	6	31	41	1	80
8 PM	1	0	6	20	36	2	65
9 PM	2	1	2	17	31	0	53
10 PM	1	0	3	16	24	4	48
11 PM	0	0	3	14	21	3	41
Grand Total	16	6	82	656	1015	49	1824

Note: Number of crashes within 12 AM hour could be off since it takes the empty hour cells of the raw data into this group.

