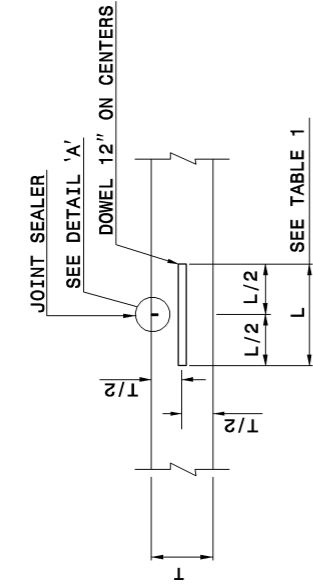


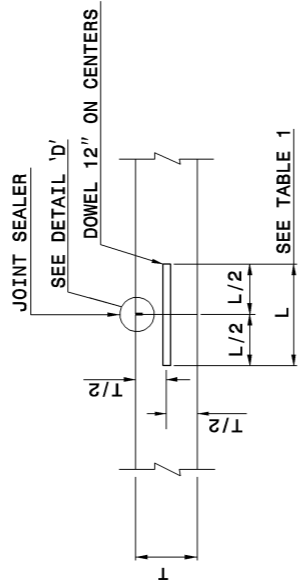
STATE OF  
 NORTH CAROLINA  
 DEPT. OF TRANSPORTATION  
 DIVISION OF HIGHWAYS  
 RALEIGH, N.C.

ENGLISH DETAIL DRAWING FOR  
**CONCRETE PAVEMENT JOINTS**  
 CONSTRUCTION AND CONTRACTION JOINTS

SHEET 1 OF 2  
**700D01**



**TRANSVERSE CONTRACTION JOINT**



**PLANNED TRANSVERSE CONSTRUCTION JOINT**

GENERAL NOTES:  
 -FORM TRANSVERSE CONTRACTION JOINTS BY SAWING WITH APPROVED EQUIPMENT.  
 -SPACE TRANSVERSE CONTRACTION JOINTS AT INTERVALS OF 15'.  
 -USE A DOWEL ASSEMBLY OR OTHER APPROVED DOWEL INSERTION TECHNIQUE IN ALL TRANSVERSE CONTRACTION JOINTS.  
 -DOWEL ASSEMBLIES ARE COVERED IN DETAIL 700D03.  
 -PROVIDE SMOOTH DOWEL BARS. PROVIDE DEFORMED TIE BARS.  
 -WHEN UTILIZING AN EARLY ENTRY SAW, CUT THE JOINT TO A MINIMUM DEPTH OF 4".

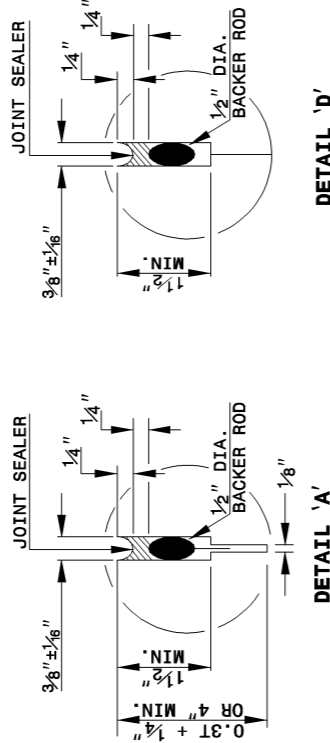


TABLE I - DOWEL BARS

SLAB THICKNESS	DOWEL BAR "D"	DOWEL BAR LENGTH "L"
8" OR LESS	1"	14"
8 1/2" TO 9 1/2"	1 1/8"	16"
10" TO 10 1/2"	1 1/4"	18"
11" AND ABOVE	1 1/2"	18"

STATE OF  
 NORTH CAROLINA  
 DEPT. OF TRANSPORTATION  
 DIVISION OF HIGHWAYS  
 RALEIGH, N.C.

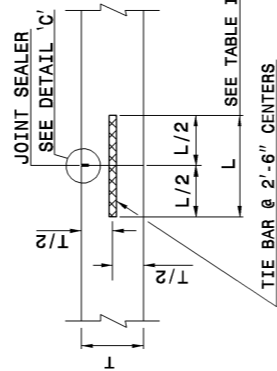
ENGLISH DETAIL DRAWING FOR  
**CONCRETE PAVEMENT JOINTS**  
 CONSTRUCTION AND CONTRACTION JOINTS

SHEET 1 OF 2  
**700D01**

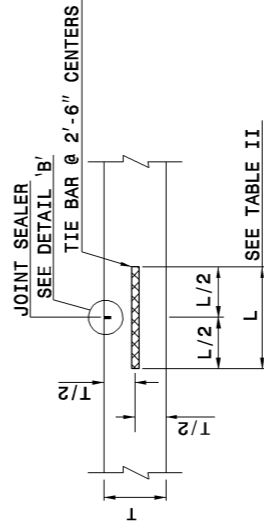
STATE OF  
 NORTH CAROLINA  
 DEPT. OF TRANSPORTATION  
 DIVISION OF HIGHWAYS  
 RALEIGH, N.C.

ENGLISH DETAIL DRAWING FOR  
**CONCRETE PAVEMENT JOINTS**  
 CONSTRUCTION AND CONTRACTION JOINTS

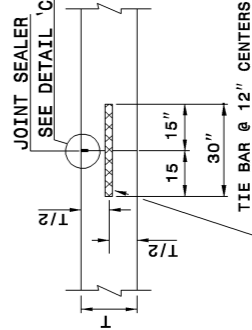
SHEET 2 OF 2  
**700D01**



**LONGITUDINAL CONSTRUCTION JOINT**



**LONGITUDINAL JOINT**



**EMERGENCY TRANSVERSE CONSTRUCTION JOINT**

GENERAL NOTES:  
 -CONSTRUCT TRANSVERSE CONSTRUCTION JOINTS AT THE END OF EACH DAY'S OPERATION (PLANNED JOINT) OR WHEN THE PLACING OF CONCRETE IS SUSPENDED FOR MORE THAN 30 MINUTES (EMERGENCY JOINT).  
 -USE AN APPROVED HEADER AT EMERGENCY JOINTS STD. DWG. 700.04 AND DESIGNED TO PERMIT THE PLACEMENT OF AND CORRECTLY HOLD IN PLACE TIE BARS.  
 -USE TIE BARS OF THE SAME DIAMETER AS DOWEL BARS FOR EMERGENCY TRANSVERSE CONSTRUCTION JOINTS.  
 -LOCATE PLANNED TRANSVERSE CONSTRUCTION JOINTS AT THE SPACING REQUIRED FOR CONTRACTION JOINTS. USE AN APPROVED METHOD OF INSTALLING DOWELS IN ALL PLANNED TRANSVERSE CONSTRUCTION JOINTS.  
 -DO NOT LOCATE EMERGENCY TRANSVERSE CONSTRUCTION JOINTS LESS THAN 6' FROM ANY CONTRACTION JOINT OR PLANNED CONSTRUCTION JOINT.  
 -DO NOT PLACE TIE BARS IN LONGITUDINAL JOINTS WITHIN 1'-4" OF A TRANSVERSE JOINT.  
 -WHEN UTILIZING AN EARLY ENTRY SAW, CUT THE JOINT TO A MINIMUM DEPTH OF 4".

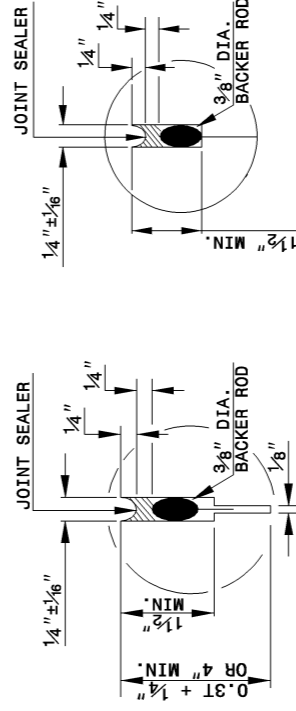


TABLE II - LONGITUDINAL TIE BARS

SLAB THICKNESS	TIE BAR DIA. "D"	TIE BAR LENGTH "L"
8 1/2" OR LESS	1/2"	30"
9" OR ABOVE	5/8"	30"

STATE OF  
 NORTH CAROLINA  
 DEPT. OF TRANSPORTATION  
 DIVISION OF HIGHWAYS  
 RALEIGH, N.C.

ENGLISH DETAIL DRAWING FOR  
**CONCRETE PAVEMENT JOINTS**  
 CONSTRUCTION AND CONTRACTION JOINTS

SHEET 2 OF 2  
**700D01**

PROJECT SERVICES UNIT  
 STANDARDS AND SPECIAL DESIGN  
 Office 919-250-4128 FAX 919-250-4119

**SEE PLATE FOR TITLE**

ORIGINAL BY: 2002 STANDARDS DATE: 01-15-02  
 MODIFIED BY: E.E. WARD DATE: 09-26-06  
 CHECKED BY: DATE:  
 FILE SPEC.: stds\06stdstodetails/english\700d01.dgn