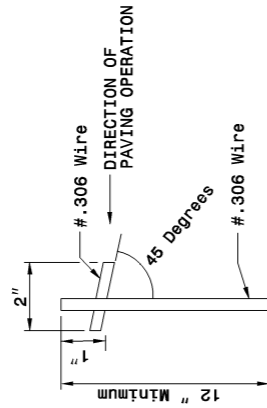
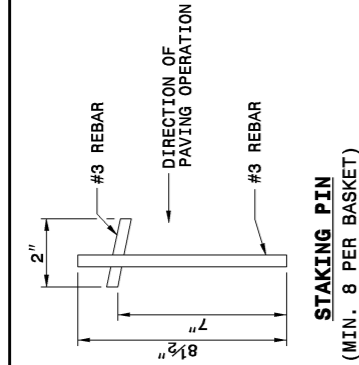


07-FEB-2006 16:00  
 S:\Contracts\02stds\Special Details\stds\06 Stds to Special Details\700003\0700d003.dgn  
 ericward AT P5222293

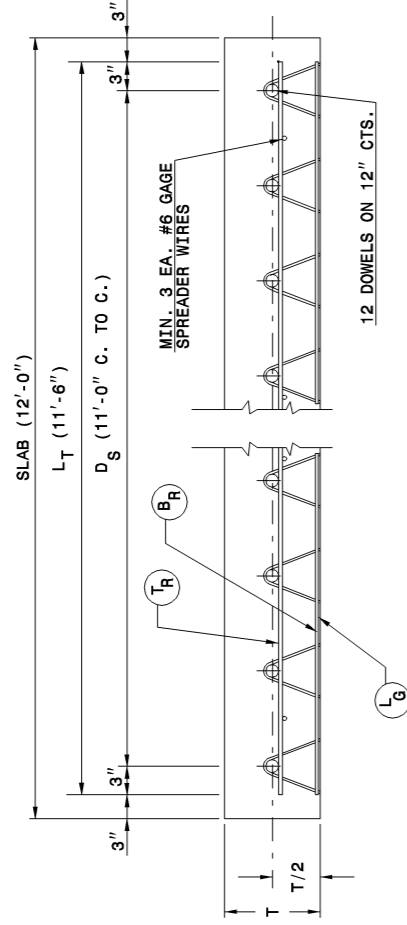
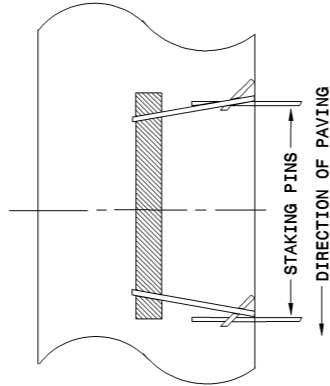
STATE OF  
 NORTH CAROLINA  
 DEPT. OF TRANSPORTATION  
 DIVISION OF HIGHWAYS  
 RALEIGH, N.C.

ENGLISH DETAIL DRAWING FOR  
**DOWEL ASSEMBLY**

SHEET 1 OF 2  
**700D03**



**STAKING PIN ALTERNATE**  
 (MIN. 8 PER BASKET)



**TYPICAL UNIT DIMENSIONS**

SLAB THICKNESS	"V" LEG ONLY WIRE GAGE	
	TR	BR LG
8" OR LESS	2	2 2
8 1/2" - 10"	0	2 2
10 1/2" & ABOVE	2/0's	2/0's 2/0's

**GENERAL NOTES:**  
 -USE RIGID CONSTRUCTED DOWEL ASSEMBLY CAPABLE OF HOLDING THE DOWEL BAR IN PROPER POSITION DURING PLACEMENT OF CONCRETE AND DESIGNED AS TO PERMIT UNRESTRICTED MOVEMENT OF THE SLAB.  
 -USE DOWEL ASSEMBLY APPROVED BY THE ENGINEER PRIOR TO USE.  
 -USE DOWEL ASSEMBLIES MANUFACTURED WITH DOWELS ALTERNATELY WELDED TO FRAME MEMBERS.  
 -USE STAKING PIN OR APPROVED ALTERNATE.  
 -SAW CUT EPOXY COATED DOWELS, BUFFING AS NECESSARY TO FACILITATE PROPER WELDING OF THE DOWEL TO THE ASSEMBLY FRAME. TOUCH UP OF THE BUFFED AREA WILL NOT BE REQUIRED.  
 -RESISTANCE WELD FRAME MEMBERS; DOWELS AND SPREADER WIRES MAY BE ARC WELDED. WELD IN ACCORDANCE WITH AWS WELDING CODE.  
 -FULLY DIP THE DOWEL ASSEMBLIES TO ASSURE A COMPLETE COATING OF WAX.  
 -SEE DETAIL 700D01 FOR DOWEL BAR SIZES.

STATE OF  
 NORTH CAROLINA  
 DEPT. OF TRANSPORTATION  
 DIVISION OF HIGHWAYS  
 RALEIGH, N.C.

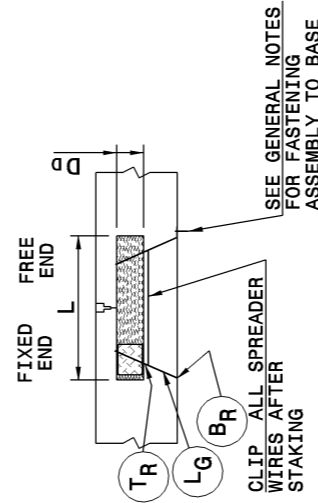
ENGLISH DETAIL DRAWING FOR  
**DOWEL ASSEMBLY**

SHEET 1 OF 2  
**700D03**

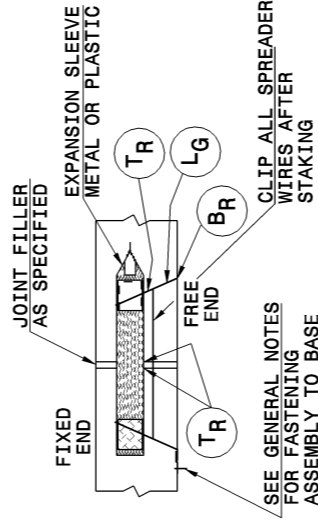
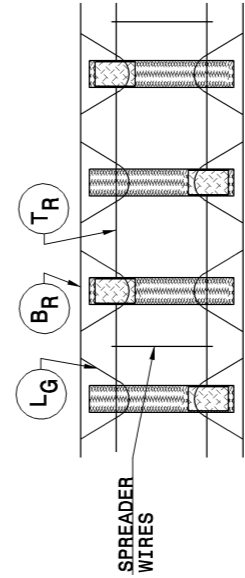
STATE OF  
 NORTH CAROLINA  
 DEPT. OF TRANSPORTATION  
 DIVISION OF HIGHWAYS  
 RALEIGH, N.C.

ENGLISH DETAIL DRAWING FOR  
**DOWEL ASSEMBLY**

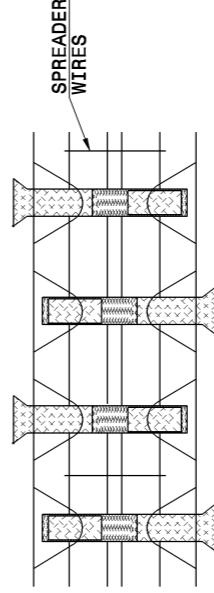
SHEET 2 OF 2  
**700D03**



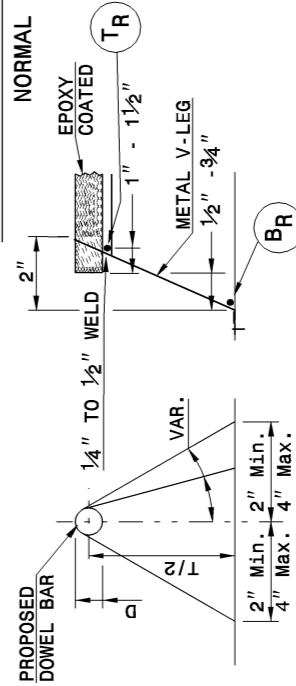
**SECTION - CONTRACTION**



**SECTION - EXPANSION**



**PARTIAL PLAN EXPANSION NORMAL**



**CROSS SECTIONAL VIEWS**

STATE OF  
 NORTH CAROLINA  
 DEPT. OF TRANSPORTATION  
 DIVISION OF HIGHWAYS  
 RALEIGH, N.C.

ENGLISH DETAIL DRAWING FOR  
**DOWEL ASSEMBLY**

SHEET 2 OF 2  
**700D03**

PROJECT SERVICES UNIT  
 STANDARDS AND SPECIAL DESIGN  
 Office 919-250-4128 FAX 919-250-4119

**SEE PLATE FOR TITLE**

ORIGINAL BY: 2002 STANDARDS DATE: 01-15-02  
 MODIFIED BY: E.E. WARD DATE: 12-15-05  
 CHECKED BY: DATE:  
 FILE SPEC.: stds\02stdstodetails/english\700d01.dgn