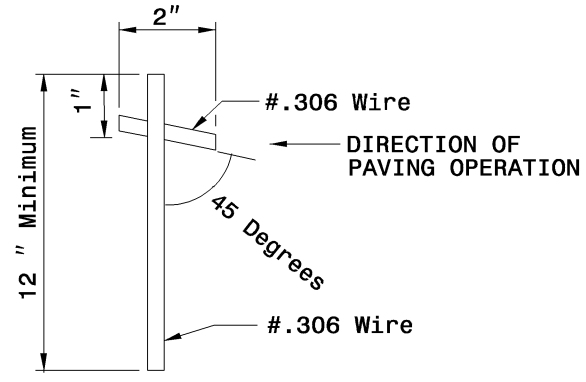
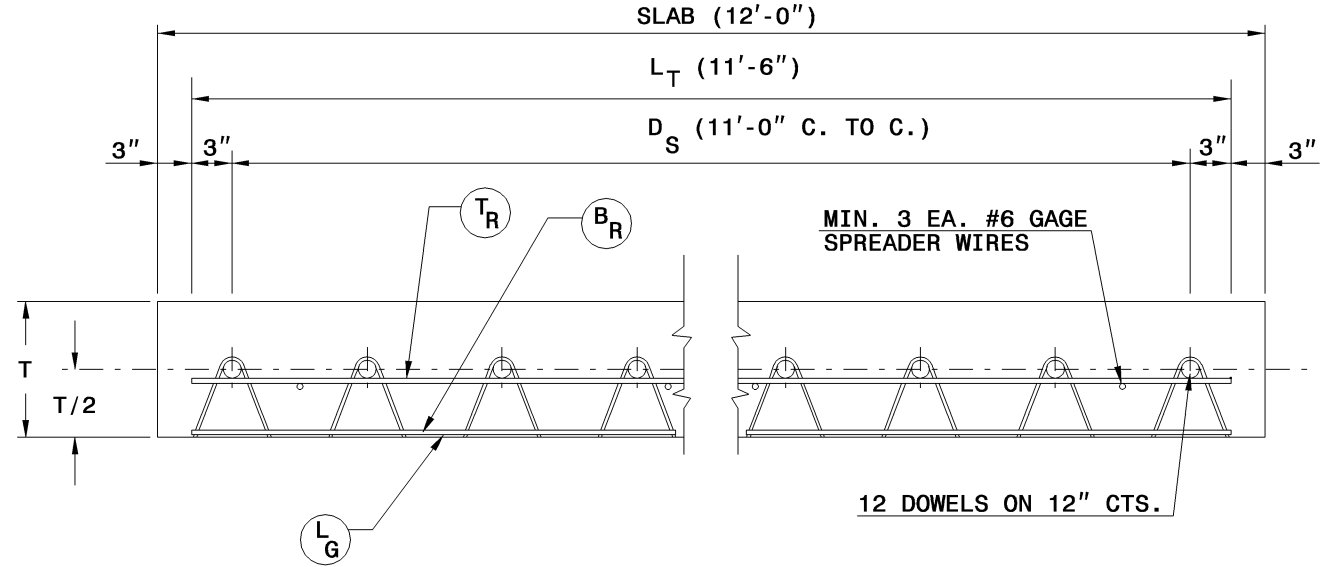
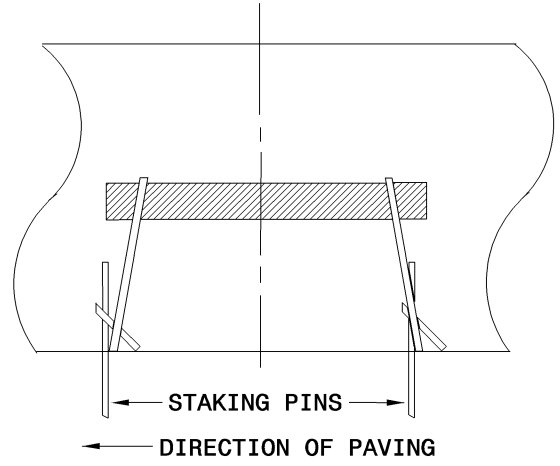


**STAKING PIN**  
(MIN. 8 PER BASKET)



**STAKING PIN ALTERNATE**  
(MIN. 8 PER BASKET)



**TYPICAL UNIT DIMENSIONS**

SLAB THICKNESS	"V" LEG ONLY		
	T <sub>R</sub>	B <sub>R</sub>	L <sub>G</sub>
8" OR LESS	2	2	2
8 1/2" - 10"	0	2	2
10 1/2" & ABOVE	2/0's	2/0's	2/0's

**GENERAL NOTES:**

- USE RIGID CONSTRUCTED DOWEL ASSEMBLY CAPABLE OF HOLDING THE DOWEL BAR IN PROPER POSITION DURING PLACMENT OF CONCRETE AND DESIGNED AS TO PERMIT UNRESTRICTED MOVEMENT OF THE SLAB. USE DOWEL ASSEMBLY APPROVED BY THE ENGINEER PRIOR TO USE.
- USE DOWEL ASSEMBLIES MANUFACTURED WITH DOWELS ALTERNATELY WELDED TO FRAME MEMBERS.
- USE STAKING PIN OR APPROVED ALTERNATE.
- SAW CUT EPOXY COATED DOWELS, BUFFING AS NECESSARY TO FACILITATE PROPER WELDING OF THE DOWEL TO THE ASSEMBLY FRAME. TOUCH UP OF THE BUFFED AREA WILL NOT BE REQUIRED.
- RESISTANCE WELD FRAME MEMBERS; DOWELS AND SPREADER WIRES MAY BE ARC WELDED. WELD IN ACCORDANCE WITH AWS WELDING CODE.
- FULLY DIP THE DOWEL ASSEMBLIES TO ASSURE A COMPLETE COATING OF WAX.
- SEE DETAIL 700D01 FOR DOWEL BAR SIZES.