

STATE OF NORTH CAROLINA  
DEPT. OF TRANSPORTATION  
DIVISION OF HIGHWAYS  
RALEIGH, N.C.

11-08

ENGLISH DETAIL DRAWING FOR  
**INDUCTIVE DETECTION LOOPS**

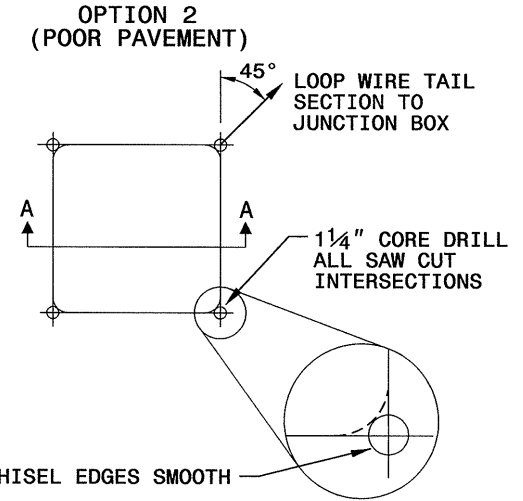
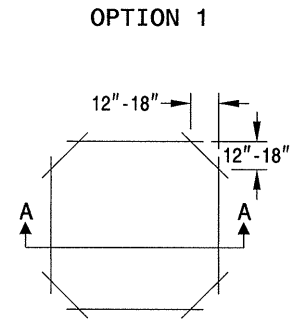
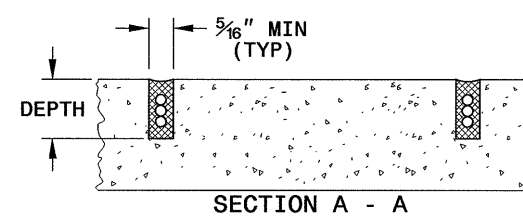
SHEET 1 OF 3  
**1725D01**

**CONVENTIONAL 4-SIDED LOOP**

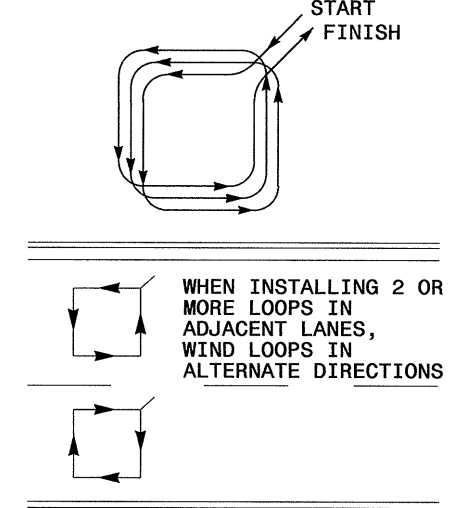
**SAW CUT OPTIONS**

**SAW SLOT DEPTH CHART**

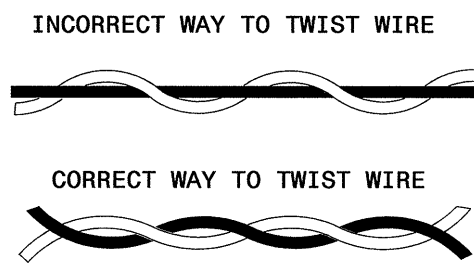
DEPTH (IN)	NO. OF WIRE TURNS				
	2	3	4	5	6
CONCRETE	2.0	2.0	2.5	2.5	3.0
ASPHALT	2.0	2.5	3.0	3.0	3.0



**LOOP WINDING METHOD**



**LOOP WIRE TWISTING METHOD**

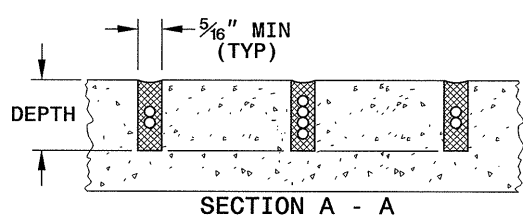
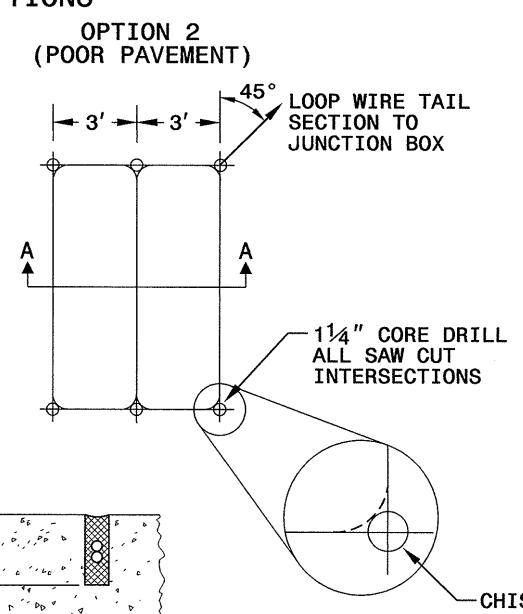
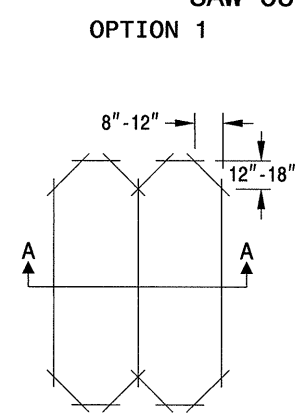


**NOTES**

1. OVERLAP SAW CUTS AT CORNERS AND INTERSECTION POINTS TO ENSURE UNIFORM SAW SLOT DEPTH.
2. MAINTAIN 12" SPACING BETWEEN LOOP WIRE TAIL SECTIONS.
3. WIRE LOOPS CONNECTED TO THE SAME DETECTOR CHANNEL IN SERIES.
4. LOCATE LOOPS IN CENTER OF LANES UNLESS OTHERWISE SHOWN ON PLANS OR APPROVED BY ENGINEER.

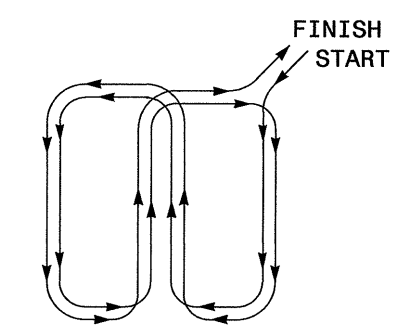
**QUADRUPOLE LOOP**

**SAW CUT OPTIONS**



DEPTH IS 2.5" FOR CONCRETE AND 3.0" FOR ASPHALT

**LOOP WINDING METHOD**



STATE OF NORTH CAROLINA  
DEPT. OF TRANSPORTATION  
DIVISION OF HIGHWAYS  
RALEIGH, N.C.

11-08

ENGLISH DETAIL DRAWING FOR  
**INDUCTIVE DETECTION LOOPS**

SHEET 1 OF 3  
**1725D01**

See Plate for Title

Prepared in the Offices of:

750 N. Greenfield Parkway  
Garner, NC 27529

SEAL

Wilton I. Dean 11/24/08  
SIGNATURE DATE

24-Nov-2008 09:28  
\\fs0-standards\plate sheets\1725D01.dgn  
2411116