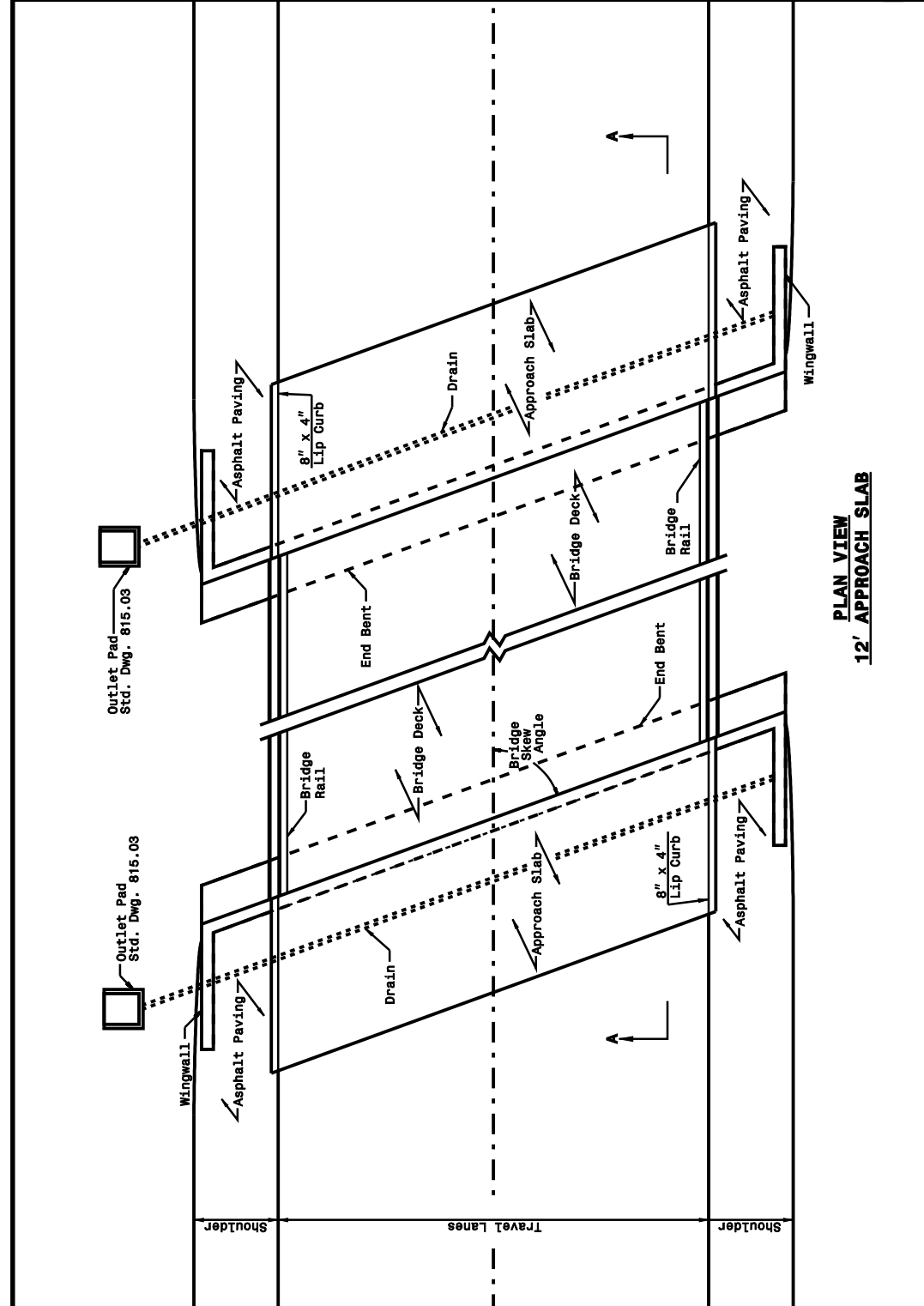


01 JUN 2009 14:51 c:\projects\special\_details\ward\stds\06\stds to special\_details\4221\bridge approach fill sub reg tier.dgn  
 sh\con\stds\at\15237501  
 jhowerston

STATE OF NORTH CAROLINA  
 DEPT. OF TRANSPORTATION  
 DIVISION OF HIGHWAYS  
 RALEIGH, N.C.

ENGLISH DETAIL DRAWING FOR  
**BRIDGE APPROACH FILLS**  
 CORED SLAB & BOX BEAM BRIDGES  
 SUB REGIONAL TIER

SHEET 1 OF 2  
**422D11**



**12' APPROACH SLAB**

STATE OF NORTH CAROLINA  
 DEPT. OF TRANSPORTATION  
 DIVISION OF HIGHWAYS  
 RALEIGH, N.C.

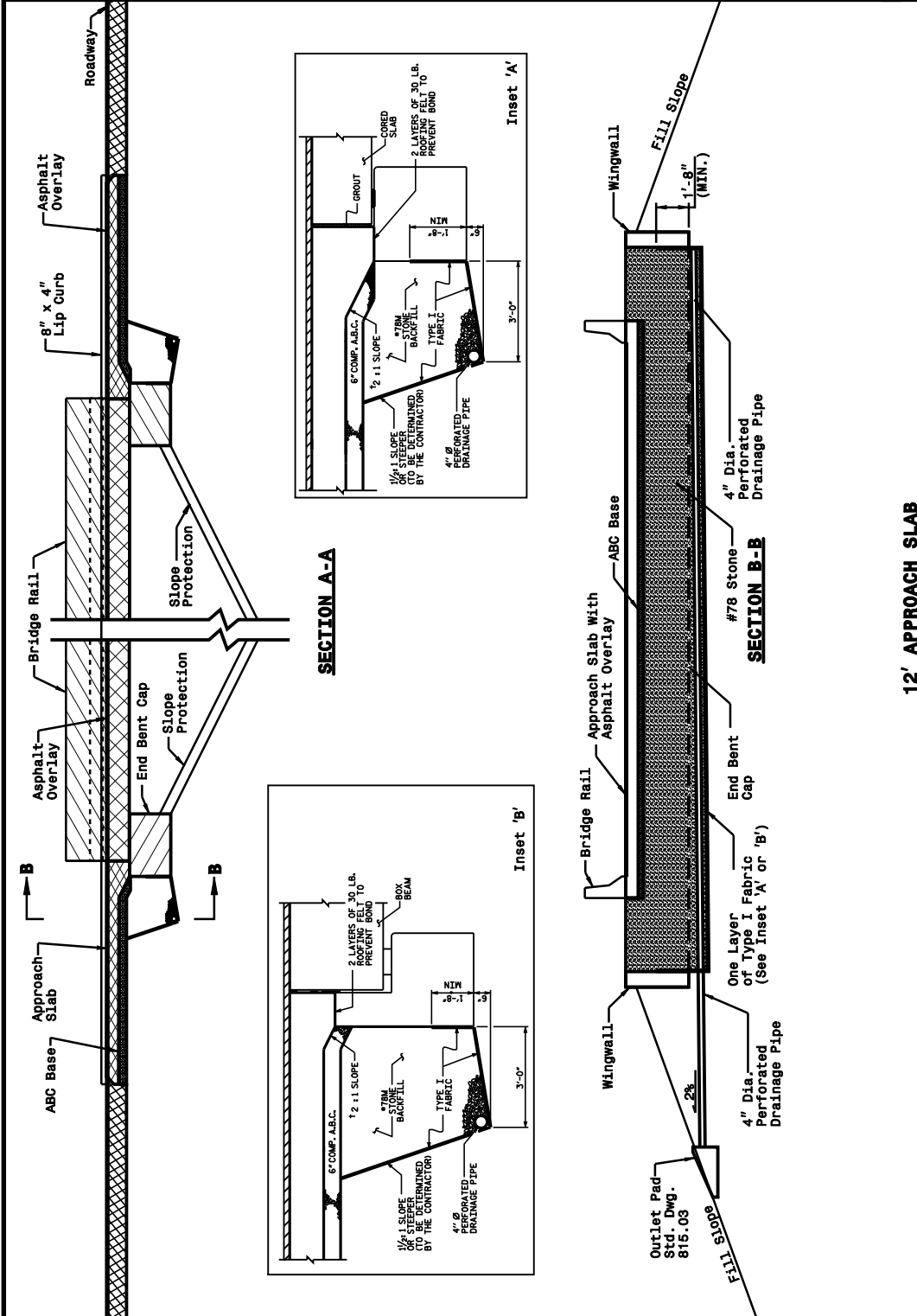
ENGLISH DETAIL DRAWING FOR  
**BRIDGE APPROACH FILLS**  
 CORED SLAB & BOX BEAM BRIDGES  
 SUB REGIONAL TIER

SHEET 1 OF 2  
**422D11**

STATE OF NORTH CAROLINA  
 DEPT. OF TRANSPORTATION  
 DIVISION OF HIGHWAYS  
 RALEIGH, N.C.

ENGLISH DETAIL DRAWING FOR  
**BRIDGE APPROACH FILLS**  
 CORED SLAB & BOX BEAM BRIDGES  
 SUB REGIONAL TIER

SHEET 2 OF 2  
**422D11**



**12' APPROACH SLAB**

STATE OF NORTH CAROLINA  
 DEPT. OF TRANSPORTATION  
 DIVISION OF HIGHWAYS  
 RALEIGH, N.C.

ENGLISH DETAIL DRAWING FOR  
**BRIDGE APPROACH FILLS**  
 CORED SLAB & BOX BEAM BRIDGES  
 SUB REGIONAL TIER

SHEET 2 OF 2  
**422D11**

**PROJECT SERVICES UNIT**  
**STANDARDS AND SPECIAL DESIGN**  
 Office 919-250-4128 FAX 919-250-4119

**BRIDGE APPROACH FILLS**  
 CORED SLAB & BOX BEAM BRIDGES  
 SUB REGIONAL TIER

ORIGINAL BY: K. A. Kempf DATE: 6-10-08  
 MODIFIED BY: DATE:  
 CHECKED BY: DATE:  
 FILE SPEC.: kkempf/english/bridge approach fills.dgn