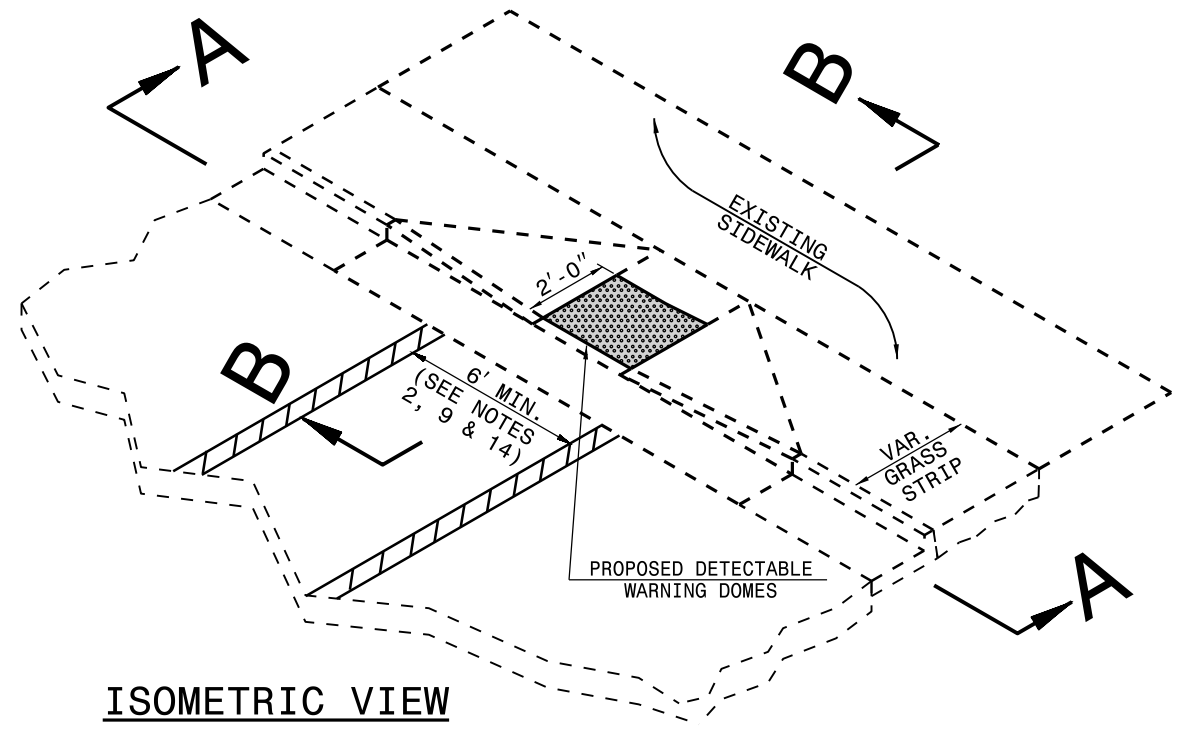
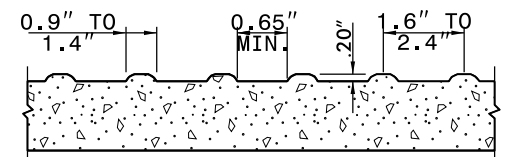
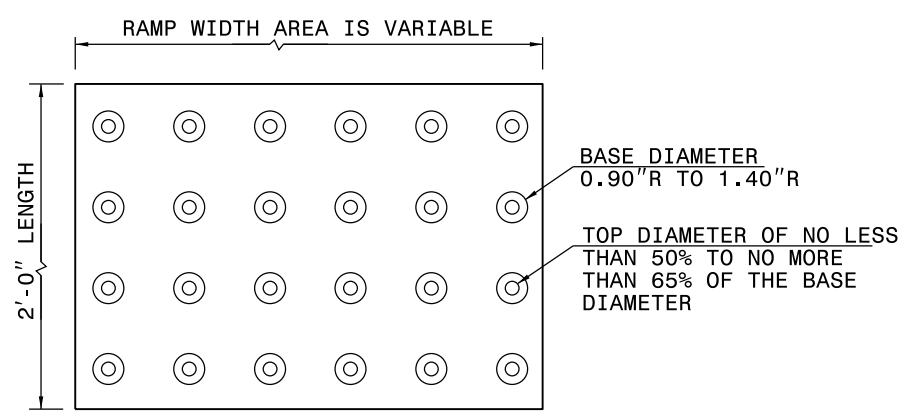


RETROFITTING DETECTABLE WARNING DOMES ONTO EXISTING CURB RAMP

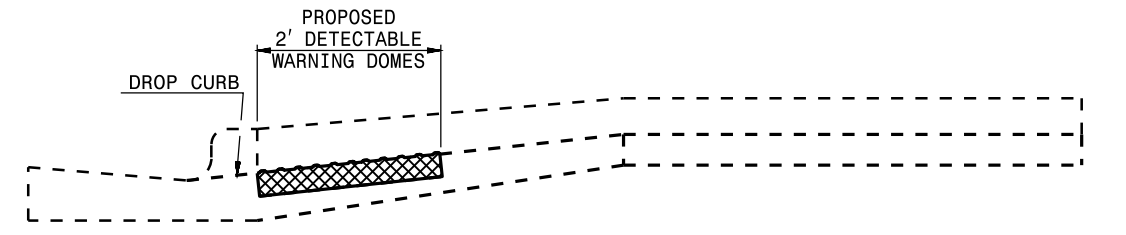


■ PAY LIMITS OF RETROFIT CURB RAMP

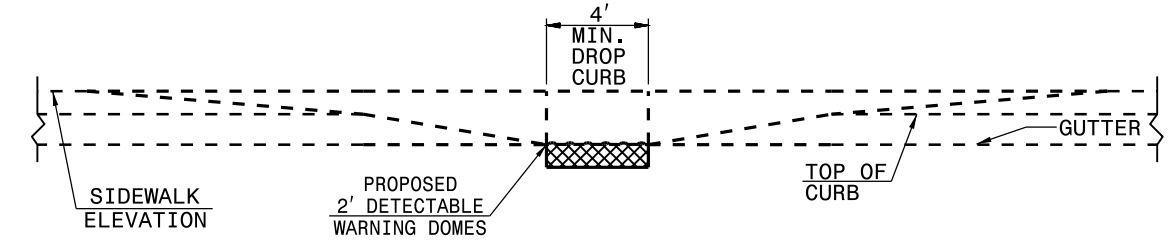


- NOTES:
1. PLACE DETECTABLE WARNING DOMES TO COVER 2'-0" LENGTH AND FULL WIDTH OF THE RAMP FLOOR AS SHOWN ON THE DETAILS.
 2. OBTAIN VISIBLE CONTRAST WITH ADJOINING SURFACE, EITHER LIGHT-ON-DARK, OR DARK-ON-LIGHT SEQUENCE COVERING THE ENTIRE RAMP.

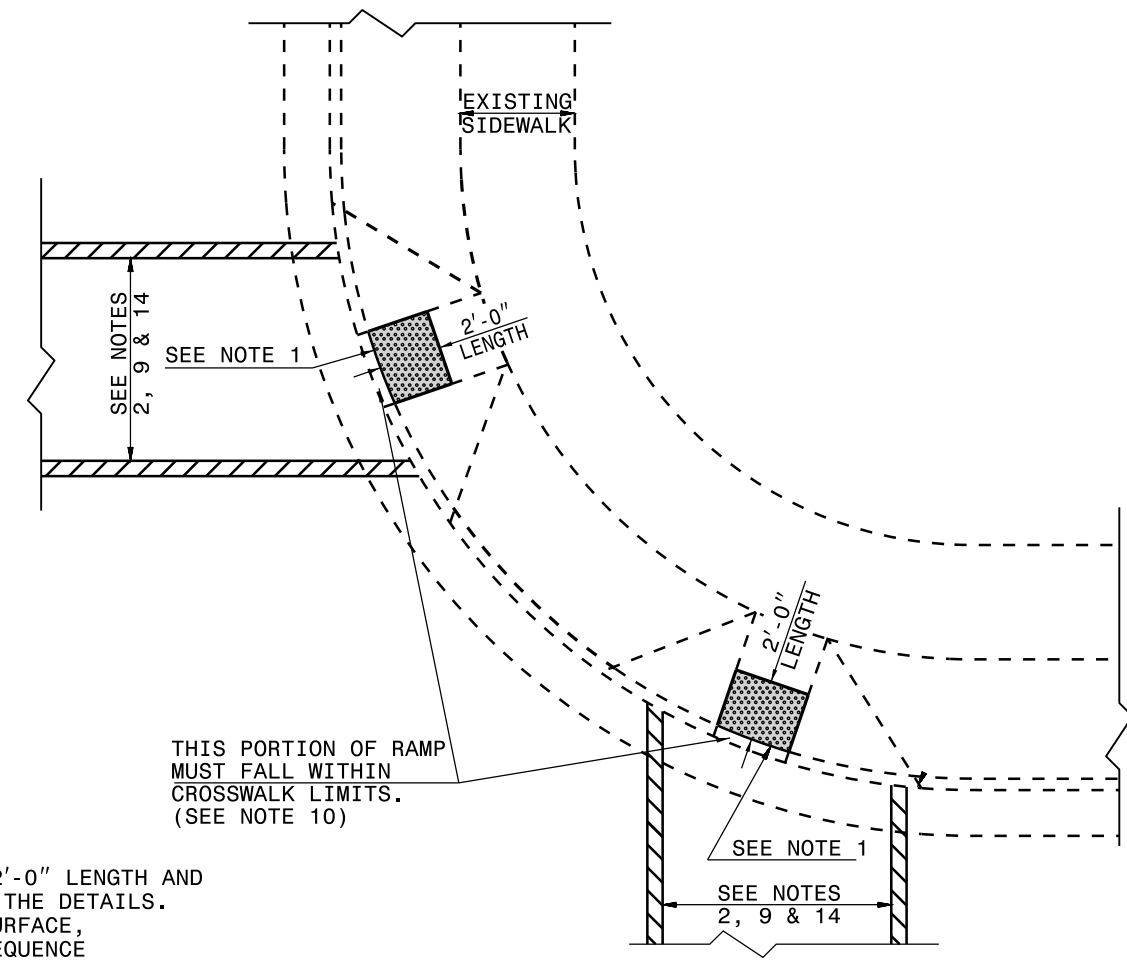
DETECTABLE WARNING DOMES



SECTION B-B



SECTION A-A



PLAN VIEW

DUAL RAMPS
ANY RADII
(40" MIN. FLOOR WIDTH)