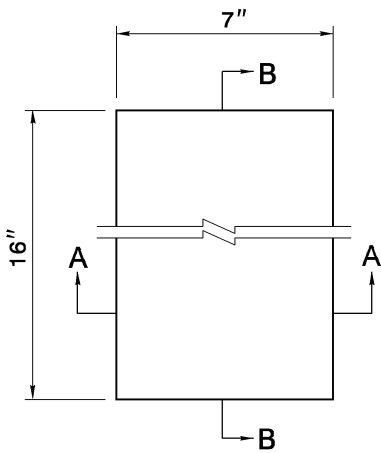
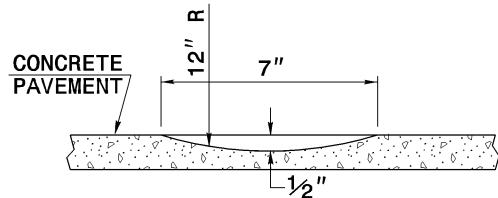


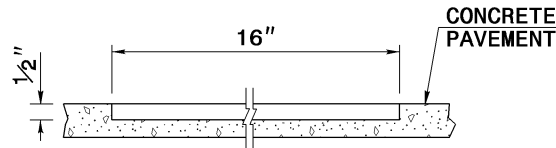
**PLAN VIEW  
PAVED SHOULDER**



**PLAN VIEW  
MILLING DETAIL**

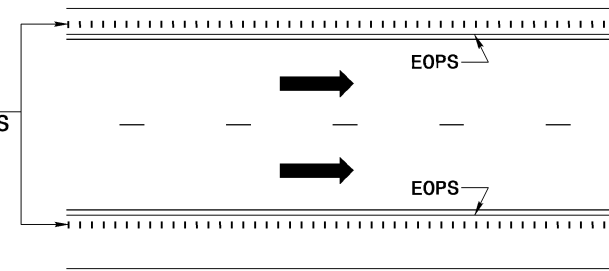


**SECTION A-A**



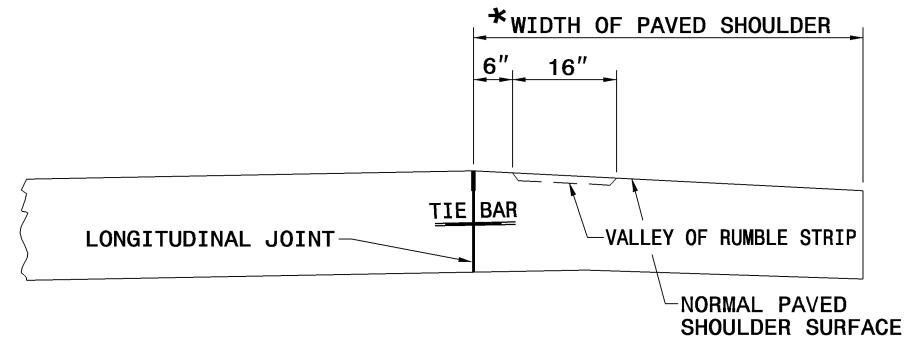
**SECTION B-B**

MILLED RUMBLE STRIPS  
ON CONCRETE SHOULDERS



**LANE TREATMENT**

\* FOR WIDTHS SEE TYPICAL SECTIONS, PLAN SHEETS, AND INTERCHANGE DETAILS.



**SECTION DETAILS SHOWING VALLEY OF RUMBLE STRIP**

**NOTES:**

1. MATCH CONCRETE SHOULDER TRANSVERSE JOINTS TO THAT OF THE ADJACENT CONCRETE PAVEMENT.
2. SAW AND SEAL THE LONGITUDINAL JOINT AND TRANSVERSE JOINTS. SEE STD. DWG. 700.01 FOR DETAILS.
3. SEE DETAIL SHOWING "METHOD OF CONCRETE SHOULDER CONSTRUCTION" FOR PAVEMENT SLOPES.