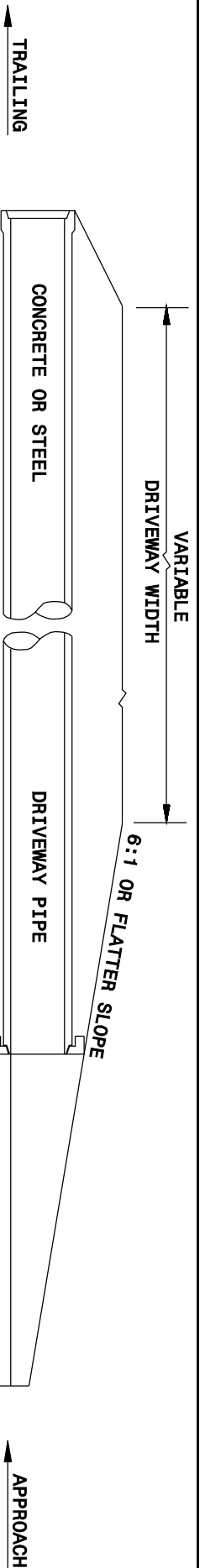


PARALLEL PIPE END SECTION

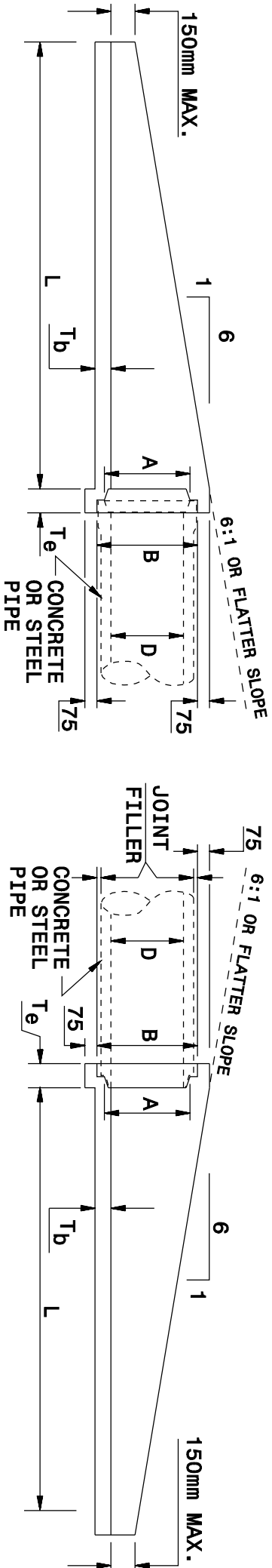
METRIC STANDARD DRAWING FOR

PRECAST CONCRETE SECTION

FOR 375mm TO 600mm PIPE



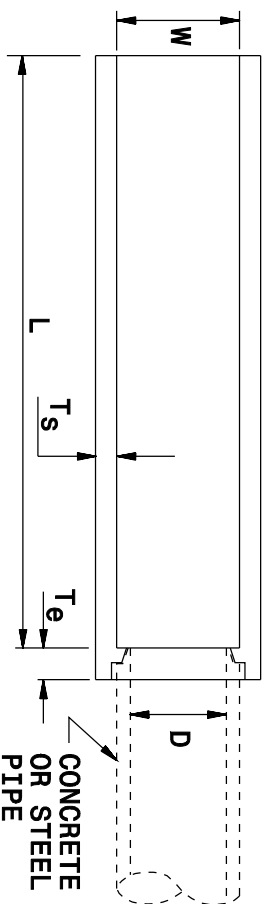
DRIVEWAY PIPE TYPICAL SECTION



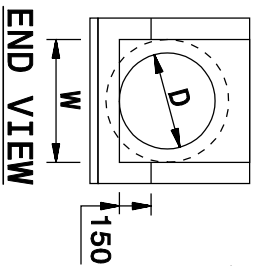
GROOVE INSTALLATION

SIDE VIEW

TONGUE INSTALLATION



PLAN VIEW



**CONCRETE OR CORRUGATED
STEEL PIPE**

ISOMETRIC VIEW

END TREATMENT DIMENSIONS							
D	L	W	T _s	T _b	T _e	A	B
375	2.3m	480	100	100	150	450	530
450	2.7m	585	100	100	150	540	635
600	3.8m	760	100	100	150	710	810

Note:

This drawing is dimensioned in millimeters unless otherwise depicted within the drawing.

NOTES:

1. CONSTRUCT PIPE END SECTION USING #13 REBAR SPACED 230mm EACH WAY AND MEET ALL REQUIREMENTS OF STANDARD SPECIFICATIONS 310 AS OUTLINED FOR "CONCRETE FLARED END SECTIONS."
2. CHAMFER ALL EXPOSED CORNERS 20mm.

PARALLEL PIPE END SECTION

METRIC STANDARD DRAWING FOR

PRECAST CONCRETE SECTION

FOR 375mm TO 600mm PIPE