

# FEDERAL AID ROUTES

## ATTACHMENT A

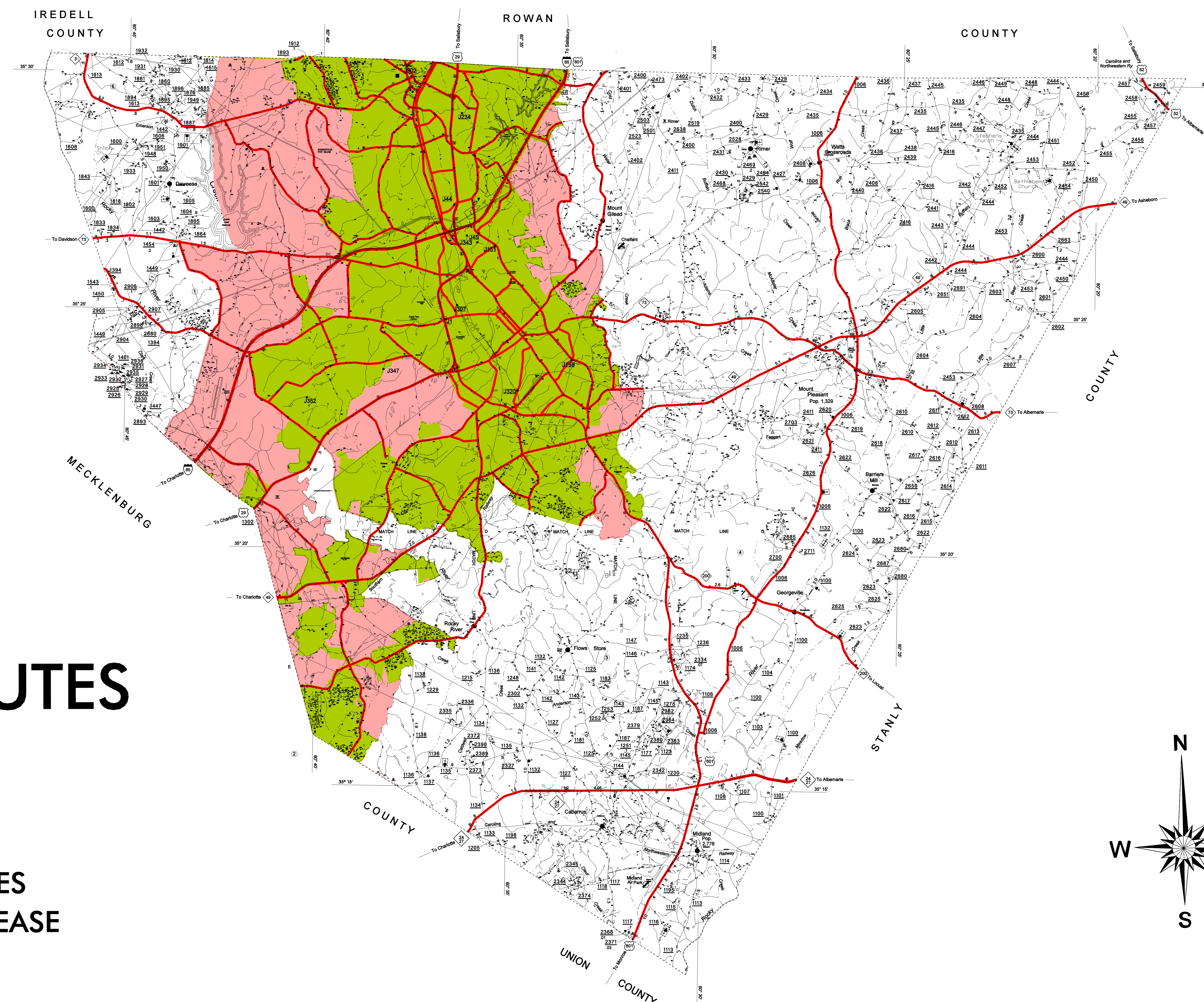
HIGHLIGHTED ROUTES  
REPRESENT FEDERAL AID ROUTES  
THAT ARE NOT ELIGIBLE FOR RELEASE

**FEDERAL AID ROUTES**

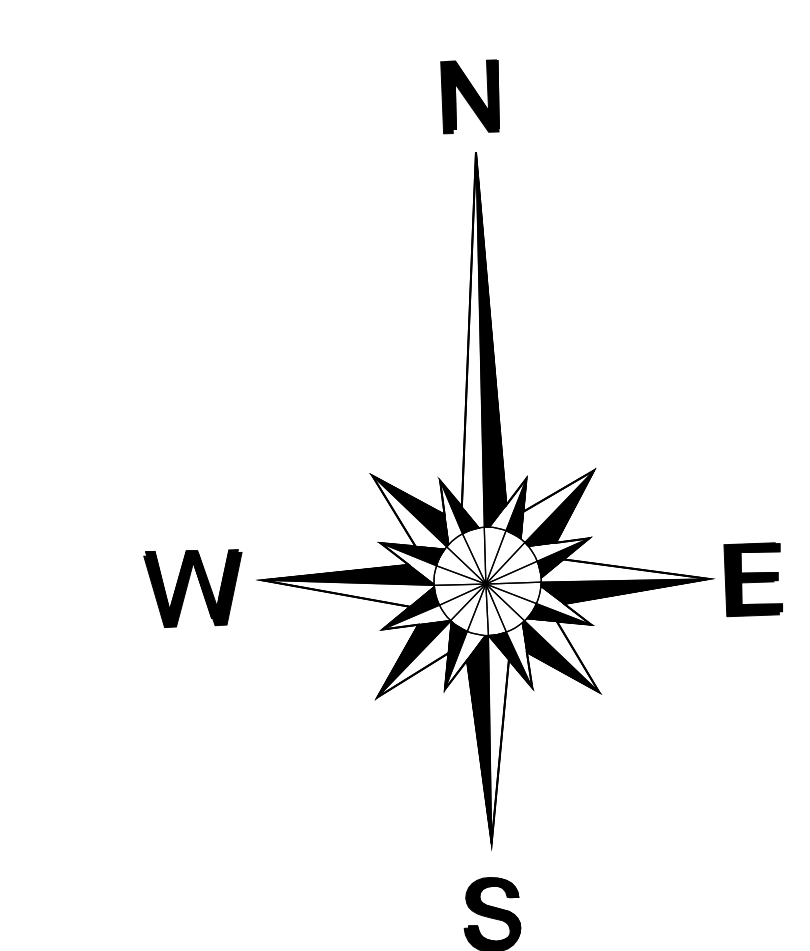
INCLUDES: INTERSTATES, FREEWAYS,  
EXPRESSWAYS, PRINCIPAL ARTERIALS,  
MINOR ARTERIALS & MAJOR COLLECTORS

EXISTING URBAN AREA  
SMOOTHED AREA

APPROVED BY FHWA FEB. 14, 2006



- LEGEND**
- PRIMITIVE OR UNIMPROVED ROAD
  - GRADED AND DRAINED ROAD
  - SOIL, GRAVEL OR STONE SURFACED ROAD
  - HARD SURFACED ROAD
  - 4 LANE UNDIVIDED HIGHWAY
  - DIVIDED HIGHWAY
  - HIGHWAY WITH FRONTAGE ROADS
  - FCA FULL CONTROL ACCESS
  - NS NON-SYSTEM ROAD
  - PROJECTED LOCATION
  - INTERSECTION DISTANCE
  - TRAFFIC CIRCLE
  - HIGHWAY INTERCHANGE
  - DETAILED HIGHWAY INTERCHANGE
  - ROAD THROUGH MOUNTAIN PASS
  - HIGHWAY BRIDGE
  - UNDERPASS
  - OVERPASS
  - DRAW SPAN ON BRIDGE
  - HIGHWAY TUNNEL
  - FORD
  - INTERSTATE HIGHWAY
  - U.S. NUMBERED HIGHWAY
  - N.C. NUMBERED HIGHWAY
  - U.S. NUMBERED BICYCLE ROUTE
  - N.C. NUMBERED BICYCLE ROUTE
  - INTERSTATE INTERCHANGE NUMBER
  - SECONDARY ROAD NUMBER
  - CABLE
  - RAILROAD, ANY NUMBER OF TRACKS USED BY SINGLE OPERATING COMPANY
  - RAILROAD, ANY NUMBER OF TRACKS USED BY MORE THAN ONE OPERATING COMPANY ON SAME OR ADJACENT RIGHTS-OF-WAY
  - RAILROAD STATION
  - GRADE CROSSING
  - UNDERPASS
  - OVERPASS
  - RAILROAD TUNNEL
  - INSET AREA
  - URBAN EXTENSION
  - BOUNDARY LINE
  - RESERVATION OR PARK BOUNDARY
  - CITY LIMIT
  - NATIONAL FOREST BOUNDARY
  - STATE FOREST BOUNDARY
  - FEDERAL GAMELAND BOUNDARY
  - STATE GAMELAND BOUNDARY
  - MILITARY RESERVATION BOUNDARY
  - COUNTY LINE
  - STATE LINE
  - INCORPORATED CITY OR VILLAGE, (GENERALIZED)
  - FREE OR TOLL FERRY
  - CANAL
  - NARROW STREAM
  - WIDE STREAM
  - DAM WITH LOCK
  - DAM
  - RESERVOIR, POND, OR LAKE
  - COMMUNITY AND TOWN CENTER
  - COUNTY SEAT
  - SCHOOL
  - COLLEGE OR UNIVERSITY
  - HOSPITAL
  - CHURCH
  - CHURCH WITH CEMETERY
  - CEMETERY
  - PATROL STATION
  - CORRECTIONAL OR PENAL INSTN.
  - HIGHWAY GARAGE OR MAINT. YARD
  - HIGHWAY DIV. OR DIST. OFFICE
  - WEIGHT STATION
  - MONUMENT-SMALL HISTORICAL SITE
  - LIGHTHOUSE
  - MOUNTAIN PEAK
  - REST AREA
  - TRIANGULATION STATION
  - COAST GUARD STATION
  - MILITARY AIRFIELD
  - COMMERCIAL OR MUNICIPAL FIELD
  - HANGAR ON FIELD
  - LANDING STRIP
  - MARKED AUXILIARY FIELD

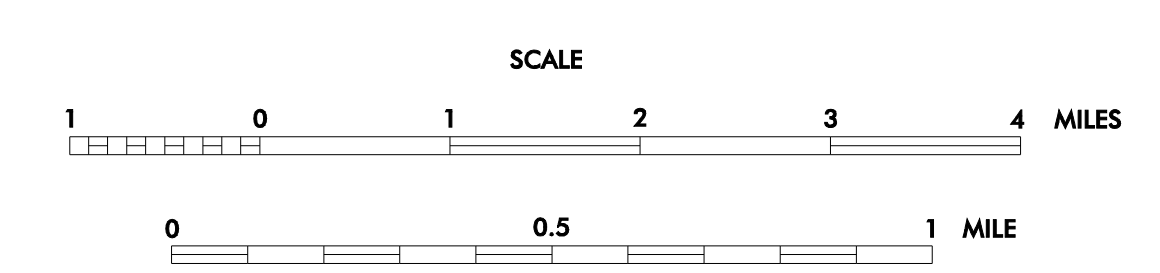


# CABARRUS COUNTY

NORTH CAROLINA

PREPARED BY THE  
NORTH CAROLINA DEPARTMENT OF TRANSPORTATION  
STATE ROAD MAINTENANCE UNIT - MAPPING AND INFORMATION SECTION

IN COOPERATION WITH THE  
U.S. DEPARTMENT OF TRANSPORTATION  
FEDERAL HIGHWAY ADMINISTRATION



SCALE FOR ENLARGEMENTS  
15,000 FOOT GRID BASED ON NORTH CAROLINA PLANE COORDINATE SYSTEM  
POLYCONIC PROJECTION

COPIES OF THIS MAP ARE AVAILABLE AT THE FOLLOWING ADDRESS AT A NOMINAL COST: N.C. DEPARTMENT OF TRANSPORTATION, GEOGRAPHIC INFORMATION SYSTEMS, RALEIGH, N.C. 27601

