

# Structures Management Unit

## Plan File Naming Convention:

**TIP#\_UnitInitial\_FileType\_County#Str#.dgn**

Example: R2006BA\_SMU\_E1\_XXYYYY.DGN

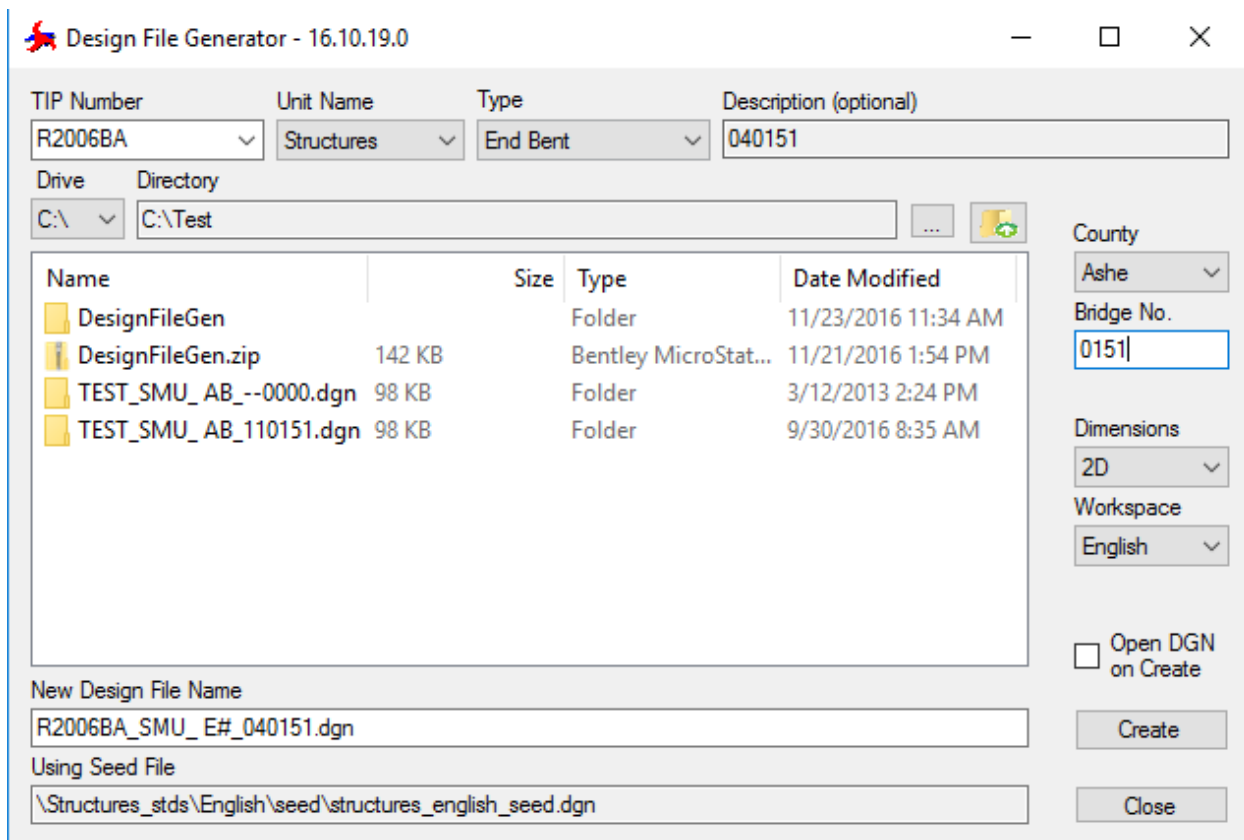
**TIP # = R2006BA**

**Unit Abbreviation. = SMU**

**File Type = E1 (End Bent No.1)**

**County # = XX      STR # = YYYY**

The Design File Generator program can be used to create consistently named plan sheets for both in-house and PEF created plans. The program interface is shown below:



## Codes For MicroStation Files

XX - County Numbers		
00 - ALAMANCE	34 - FRANKLIN	68 - PAMLICO
01 - ALEXANDER	35 - GASTON	69 - PASQUOTANK
02 - ALLEGHANY	36 - GATES	70 - PENDER
03 - ANSON	37 - GRAHAM	71 - PERQUIMANS
04 - ASHE	38 - GRANVILLE	72 - PERSON
05 - AVERY	39 - GREENE	73 - PITT
06 - BEAUFORT	40 - GUILFORD	74 - POLK
07 - BERTIE	41 - HALIFAX	75 - RANDOLPH
08 - BLADEN	42 - HARNETT	76 - RICHMOND
09 - BRUNSWICK	43 - HAYWOOD	77 - ROBESON
10 - BUNCOMBE	44 - HENDERSON	78 - ROCKINGHAM
11 - BURKE	45 - HERTFORD	79 - ROWAN
12 - CABARRUS	46 - HOKE	80 - RUTHERFORD
13 - CALDWELL	47 - HYDE	81 - SAMPSON
14 - CAMDEN	48 - IREDELL	82 - SCOTLAND
15 - CARTERET	49 - JACKSON	83 - STANLY
16 - CASWELL	50 - JOHNSTON	84 - STOKES
17 - CATAWBA	51 - JONES	85 - SURRY
18 - CHATHAM	52 - LEE	86 - SWAIN
19 - CHEROKEE	53 - LENOIR	87 - TRANSYLVANIA
20 - CHOWAN	54 - LINCOLN	88 - TYRRELL
21 - CLAY	55 - MACON	89 - UNION
22 - CLEVELAND	56 - MADISON	90 - VANCE
23 - COLUMBUS	57 - MARTIN	91 - WAKE
24 - CRAVEN	58 - MCDOWELL	92 - WARREN
25 - CUMBERLAND	59 - MECKLENBURG	93 - WASHINGTON
26 - CURRITUCK	60 - MITCHELL	94 - WATAUGA
27 - DARE	61 - MONTGOMERY	95 - WAYNE
28 - DAVIDSON	62 - MOORE	96 - WILKES
29 - DAVIE	63 - NASH	97 - WILSON
30 - DUPLIN	64 - NEW HANOVER	98 - YADKIN
31 - DURHAM	65 - NORTHHAMPTON	99 - YANCEY
32 - EDGECOMBE	66 - ONSLOW	
33 - FORSYTH	67 - ORANGE	

**FILE DESCRIPTIONS**

File Type Code	DESCRIPTION CODES FOR FILE NAMES	File Type Code	DESCRIPTION CODES FOR FILE NAMES
AB	ABUTMENT SHEET	FP	FRAMING PLAN LAYOUT SHEET
AR	ALASKA RAIL	MD	CONCRETE MEDIAN
AS	APPROACH SLAB SHEETS	MJ	MODULAR EXPANSION JOINT SEAL
BR	BARRIER RAIL	OR	OREGON RAIL
BG	BEARING SHEET	PC	STAGE OF PHASE CONSTRUCTION
BK	BULKHEAD SHEET	PGD	PRELIMINARY GENERAL DRAWING
BM	SUPERSTRUCTURE BILL OF MATERIAL SHEET	PP	PRESTRESSED CONCRETE PILE
BR	BARRIER RAIL SHEET	RF	RAIL RETROFIT
B1, B2, B3 OR B4....	BENT SHEETS	RR	RIP-RAP SHEET
CG	COAST GUARD PERMIT SHEET	RW	RETAINING WALL DETAIL SHEET
CS	CORED SLAB SHEETS	SP	SLOPE PROTECTION SHEETS
CU	CULVERT SHEETS	S1, S2, S3 OR S4....	PLAN OF SPAN SHEETS
DT	DETOUR SHEETS	SS	STRUCTURAL STEEL DETAIL SHEETS
DL	DEAD LOAD DEFLECTION TABLE SHEETS	SW	SIDEWALK DETAILS SHEET
DP	PRESTRESSED CONCRETE DECK PANEL	TA	TEMPORARY ACCESS
E1, E2, E3 OR E4 ....	END BENT SHEETS	TS	SUPERSTRUCTURE TYPICAL SECTION SHEET
JS	JOINT SEAL SHEET	UT	UTILITIES DETAILS SHEET
GD	GENERAL DRAWING SHEETS	1MR	ONE BAR METAL RAIL
GR	GUARDRAIL ATTACHMENT SHEET	2MR	TWO BAR METAL RAIL
G1, G2, G3, OR G4....	PRESTRESSED CONCRETE GIRDER SHEETS	3MR	THREE BAR METAL RAIL
IS	INDEX OF MULTI-STRUCTURE PROJECTS	JT	JOINT DETAIL
LC	LONG CORD LAYOUT SHEET	SSR	STRUCTURAL STEEL REPAIRS
FL	FOUNDATION LAYOUT SKETCH	DSR	DECK SURFACE REPAIR

# Electronically Sealed PDF Naming Convention

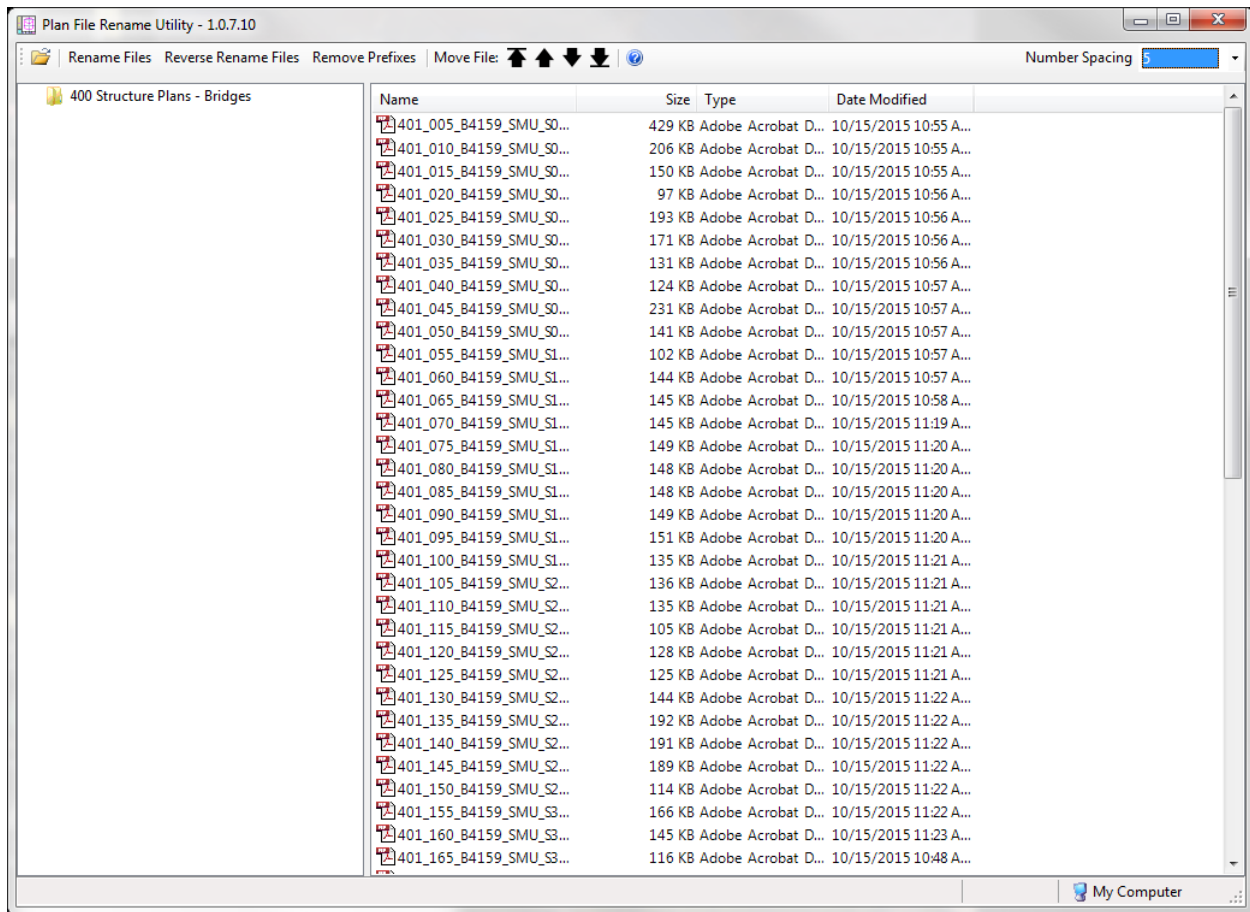
All Structure 100% plans shall be electronically sealed, full size (22"x34"), individual sheets and follow the naming convention described below:

## **401\_001\_U2579B\_SMU\_GD01\_###\_XXYYYY**

**4xx** – All Structures plans will be in the 400 series of sheets and the xx will be the structure # given during the scoping process (400 will be the title sheet) (Culverts will be in the 410 series unless there are more than 9 structures on the project and walls will be 420)

**001** – Electronic page number for the particular bridge (each bridge set starts at 001 and successive numbers are all odd, ie. 001, 003, 005....)

Use the Plan File Rename Utility to number the pdf's created from design files. Ensure the pdf's are in the appropriate order and use the utility to rename. Set the number spacing to 2 or 5 to ensure space for any sheets needing to be added as revisions.



**U2579B** – TIP number for the particular project

**SMU** – Structures Management Unit

**GD01** – abbreviation of the drawing type as found in the Design File Generator program

### - Sheet number as shown on the plans (In the example below, this number would be 2 or 002)

XXYYYY – County and Bridge Number as described above.

Example Bridge: 401\_001\_R2006BA\_SMU\_TS\_###\_XXYYYY.PDF  
403\_025\_R2006BA\_SMU\_E1\_###\_XXYYYY.PDF


Example Culvert: 410\_001\_R2006BA\_SMU\_CU\_###\_XXYYYY.PDF

Example Wall: 420\_001\_R2006BA\_SMU\_RW\_###\_XXYYYY.PDF

### Plansheet Numbering

For all projects with multiple bridge structures, the following sheet numbering conventions should be used in the lower right corner of each plan sheet:

PROJECT NO. U-3308  
DURHAM COUNTY  
STATION: 16+42.70-LALT-  
SHEET 2 OF 3



STATE OF NORTH CAROLINA  
DEPARTMENT OF TRANSPORTATION  
RALEIGH

GENERAL DRAWING  
FOR BRIDGE OVER NC 147  
(DURHAM EXPRESSWAY) ON  
NC 55 (ALSTON AVE.)

REVISIONS						SHEET NO.
NO.	BY	DATE	NO.	BY	DATE	
1			3			S1-2
2			4			TOTAL SHEETS 47

STR. #1

For this example, S1 is the first structure in the project and this is the second page. The total number of sheets are based on the single structure and not the entire plan set.