

MATERIAL:

GRADE 36 - USE  $\frac{3}{8}$ " THICKNESS X WIDTH DETAILED.

GRADE 50 OR 50W - USE THICKNESS SAME AS GIRDER WEB PLATE.

CONNECTION:

\* T=THICKNESS - SEE ABOVE

NOTES ON PLANS:

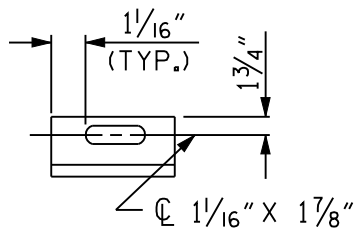
COUPLING IN DRAIN PIPE WILL BE PERMITTED AS APPROVED BY THE ENGINEER.

TOP OF FLOOR DRAIN TO BE SET  $\frac{3}{8}$ " BELOW SURFACE OF SLAB.

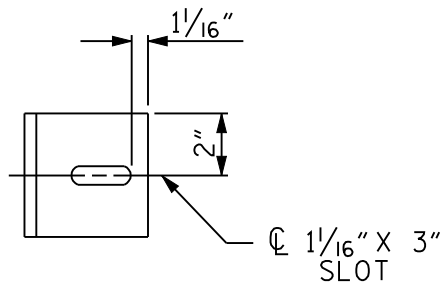
4 -  $\frac{1}{2}$ " SQUARE LUGS TO BE GLUED TO THE PVC PLASTIC PIPE AT EQUAL SPACES AROUND THE PIPE DRAIN APPROXIMATELY 4" FROM THE TOP OF THE PIPE.

BOLT SIZE TO BE SAME AS DIAPHRAGMS AND CROSS FRAME CONNECTIONS. STAINLESS STEEL WORM DRIVE HOSE CLAMP SHALL BE COMMERCIAL QUALITY.

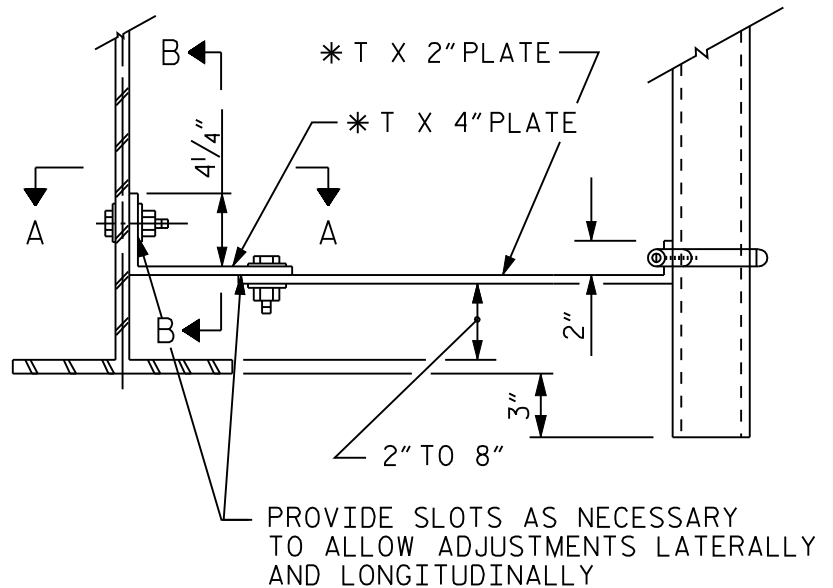
THE 6" Ø PVC PLASTIC PIPE AND FITTINGS SHALL BE SCHEDULE 40 AND CONFORM TO ASTM D1785.



SECTION B-B



SECTION A-A



DRAIN CONNECTOR DETAIL

**FIGURE 6 - 13**

MATERIAL:

GRADE 250 - USE 9mm THICKNESS X WIDTH DETAILED.

GRADE 345 OR 345W - USE THICKNESS SAME AS GIRDER WEB PLATE.

CONNECTION:

\* T=THICKNESS - SEE ABOVE

NOTES ON PLANS:

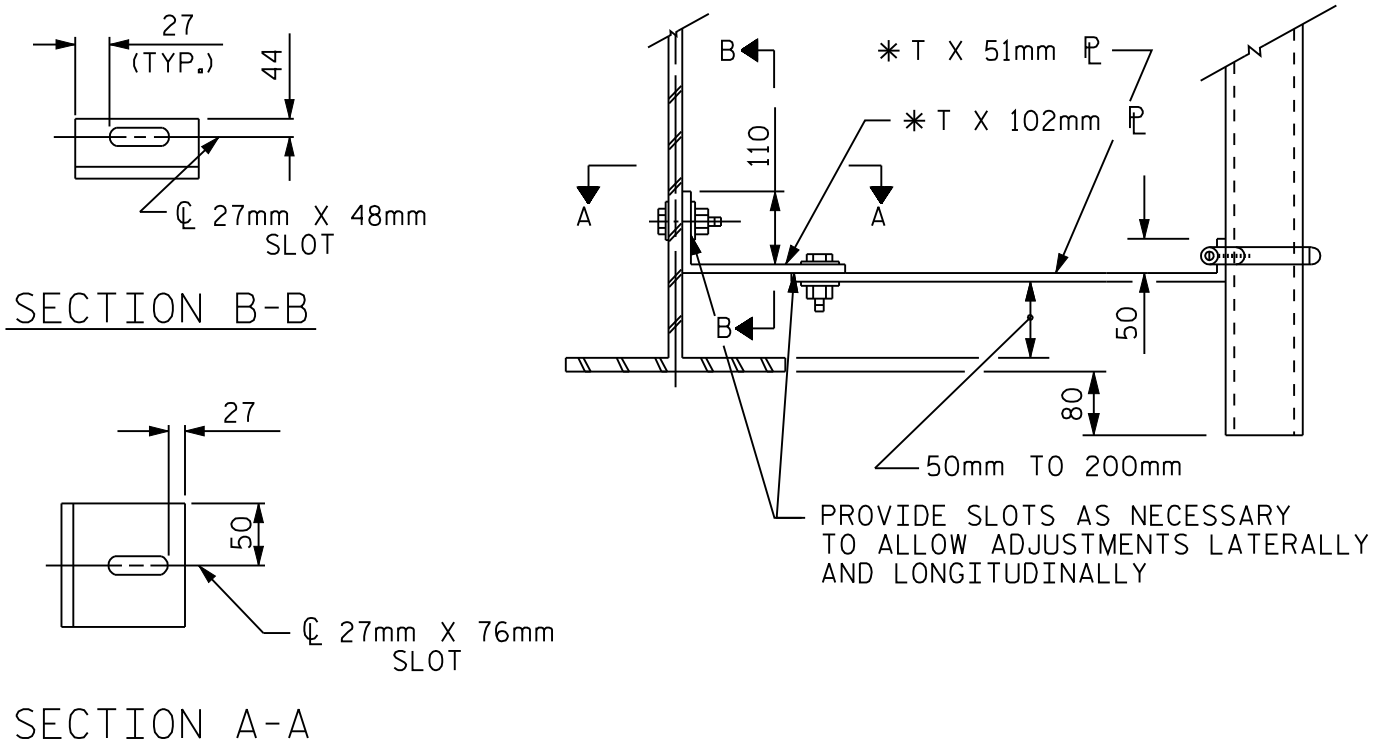
COUPLING IN DRAIN PIPE WILL BE PERMITTED AS APPROVED BY THE ENGINEER.

TOP OF FLOOR DRAIN TO BE SET 10mm BELOW SURFACE OF SLAB.

4 - 13mm SQUARE LUGS TO BE GLUED TO THE PVC PLASTIC PIPE AT EQUAL SPACES AROUND THE PIPE DRAIN APPROXIMATELY 100mm FROM THE TOP OF THE PIPE.

BOLT SIZE TO BE SAME AS DIAPHRAGMS AND CROSS FRAME CONNECTIONS. STAINLESS STEEL WORM DRIVE HOSE CLAMP SHALL BE COMMERCIAL QUALITY.

THE 152mm Ø PVC PLASTIC PIPE AND FITTINGS SHALL BE SCHEDULE 40 AND CONFORM TO ASTM D1785.



DRAIN CONNECTOR DETAIL

**FIGURE 6 - 13 M**