

NOTE TO DESIGNER

WHEN THE DECK SUPERELEVATION EXCEEDS 5%, SPECIAL ATTENTION IS NEEDED TO MAINTAIN PROPER EMBEDMENT OF RAIL POST ANCHOR ASSEMBLIES AND "E" BARS IN THE END POST ON THE HIGH SIDE OF THE DECK.

"U" BAR DETAIL

NOTE:  
WHEN DETAILING FOR A FUTURE SIDEWALK, THE EMBEDDED "U" BARS ARE NOT REQUIRED.

\* "U" BARS MAY BE PUSHED INTO GREEN CONCRETE AFTER SPAN HAS BEEN SCREEDED OFF.

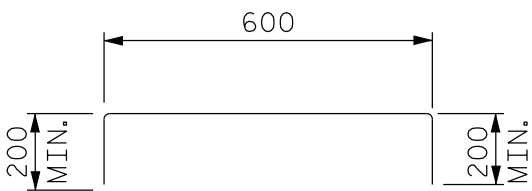
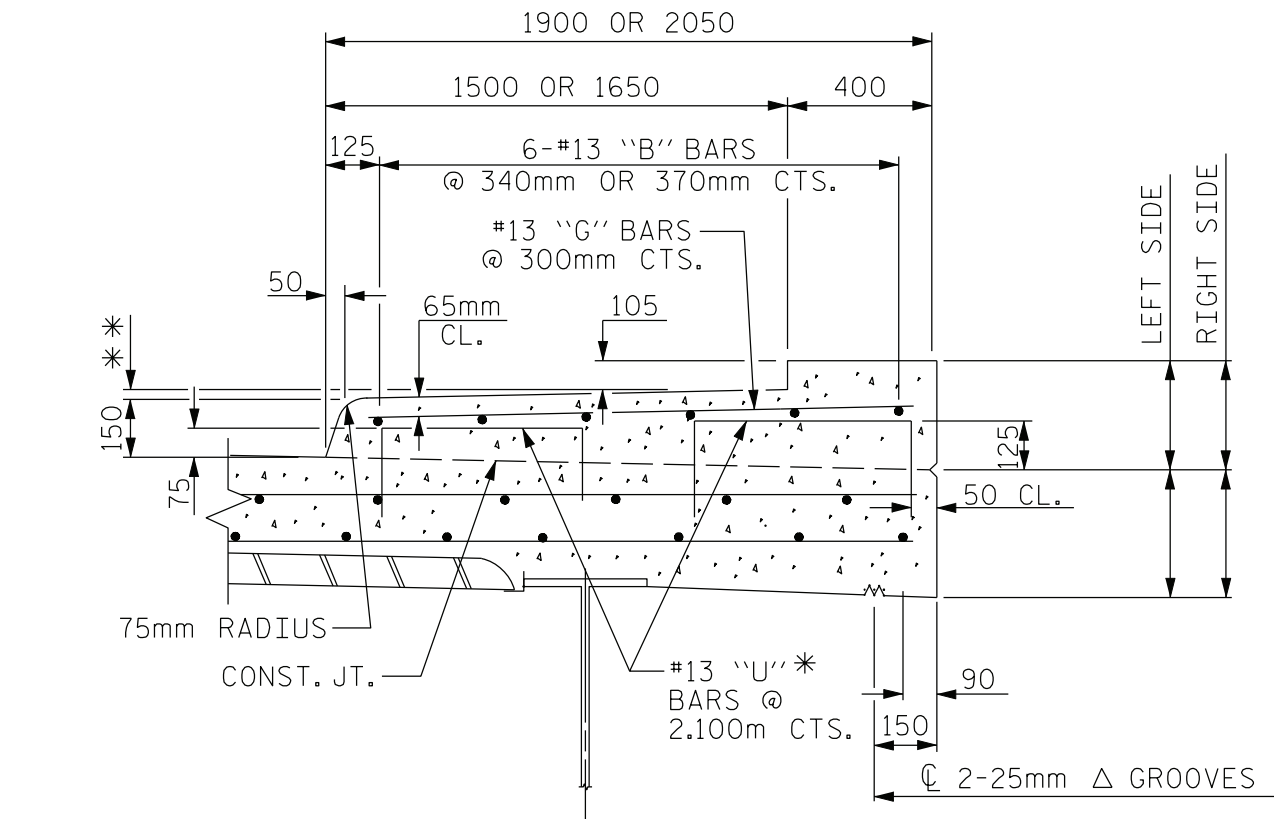
\*\* 1 1/4" FOR 5'-0" SIDEWALK OR 1 3/8" FOR 5'-6" SIDEWALK.

NOTE ON PLANS:

GROOVED CONTRACTION JOINT, 1/2" IN DEPTH, SHALL BE TOOLED IN ALL EXPOSED FACES OF THE SIDEWALK IN ACCORDANCE WITH ARTICLE 825-10(B) OF THE STANDARD SPECIFICATIONS. THE CONTRACTION JOINT SHALL BE LOCATED AT A SPACING OF 8FT. TO 10FT. BETWEEN EXPANSION JOINTS. NO CONTRACTION JOINTS WILL BE REQUIRED FOR SEGMENTS LESS THAN 10 FEET IN LENGTH.

SECTION THRU SIDEWALK

**FIGURE 6 - 16**



NOTE TO DESIGNER

WHEN THE DECK SUPERELEVATION EXCEEDS 5%, SPECIAL ATTENTION IS NEEDED TO MAINTAIN PROPER EMBEDMENT OF RAIL POST ANCHOR ASSEMBLIES AND "E" BARS IN THE END POST ON THE HIGH SIDE OF THE DECK.

"U" BAR DETAIL

NOTE:  
WHEN DETAILING FOR A FUTURE SIDEWALK, THE EMBEDDED "U" BARS ARE NOT REQUIRED.

\* "U" BARS MAY BE PUSHED INTO GREEN CONCRETE AFTER SPAN HAS BEEN SCREEDED OFF.

\*\* 30mm FOR 1500mm SIDEWALK OR 35mm FOR 1650mm SIDEWALK.

NOTE ON PLANS:

GROOVED CONTRACTION JOINT, 12mm IN DEPTH, SHALL BE TOOLED IN ALL EXPOSED FACES OF THE SIDEWALK IN ACCORDANCE WITH ARTICLE 825-10(B) OF THE STANDARD SPECIFICATIONS. THE CONTRACTION JOINT SHALL BE LOCATED AT A SPACING OF 2.400m TO 3.500m BETWEEN EXPANSION JOINTS. NO CONTRACTION JOINTS WILL BE REQUIRED FOR SEGMENTS LESS THAN 3.500m IN LENGTH.

SECTION THRU SIDEWALK

**FIGURE 6 - 16 M**