

FIGURE 6 - 26

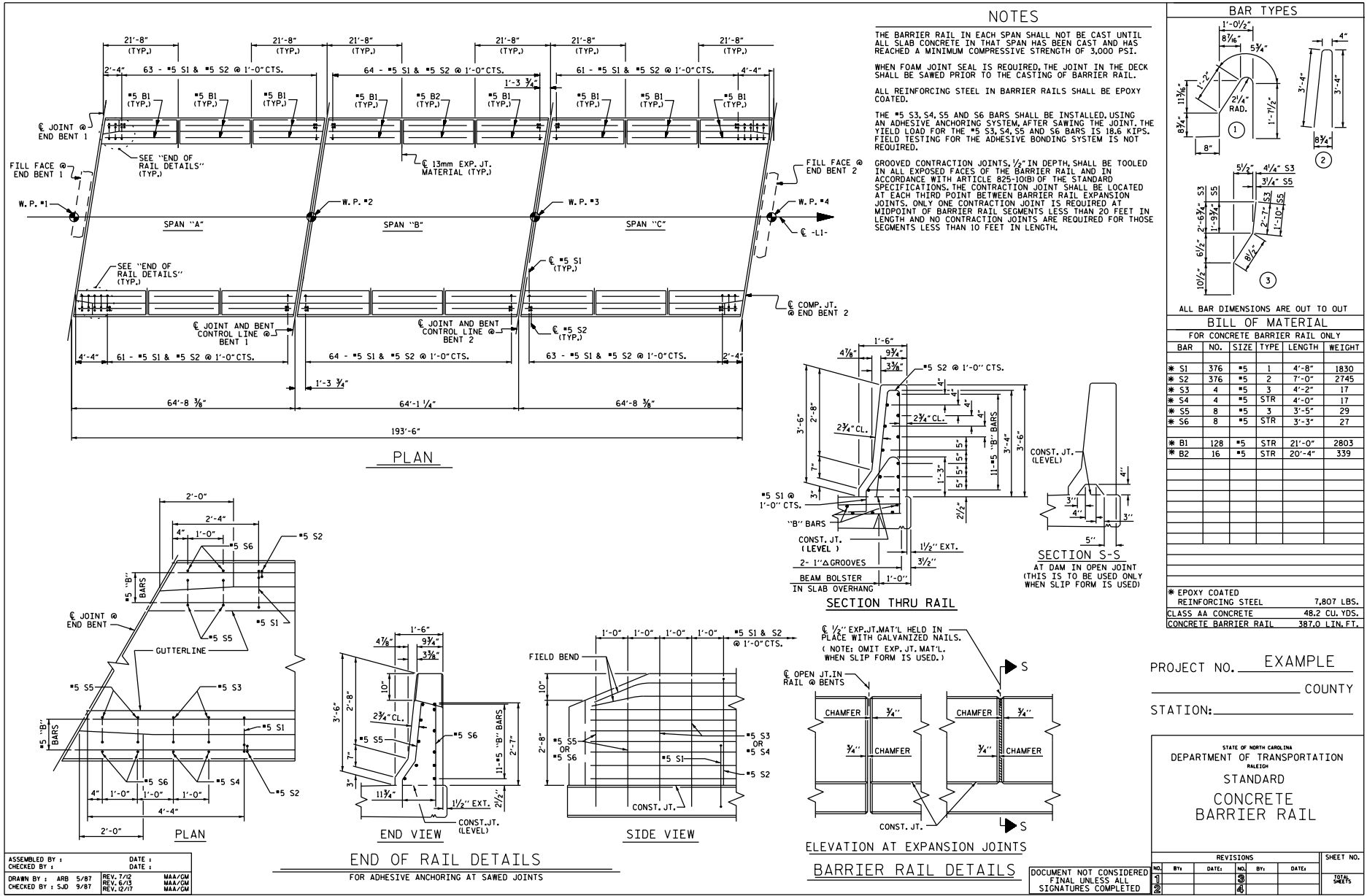
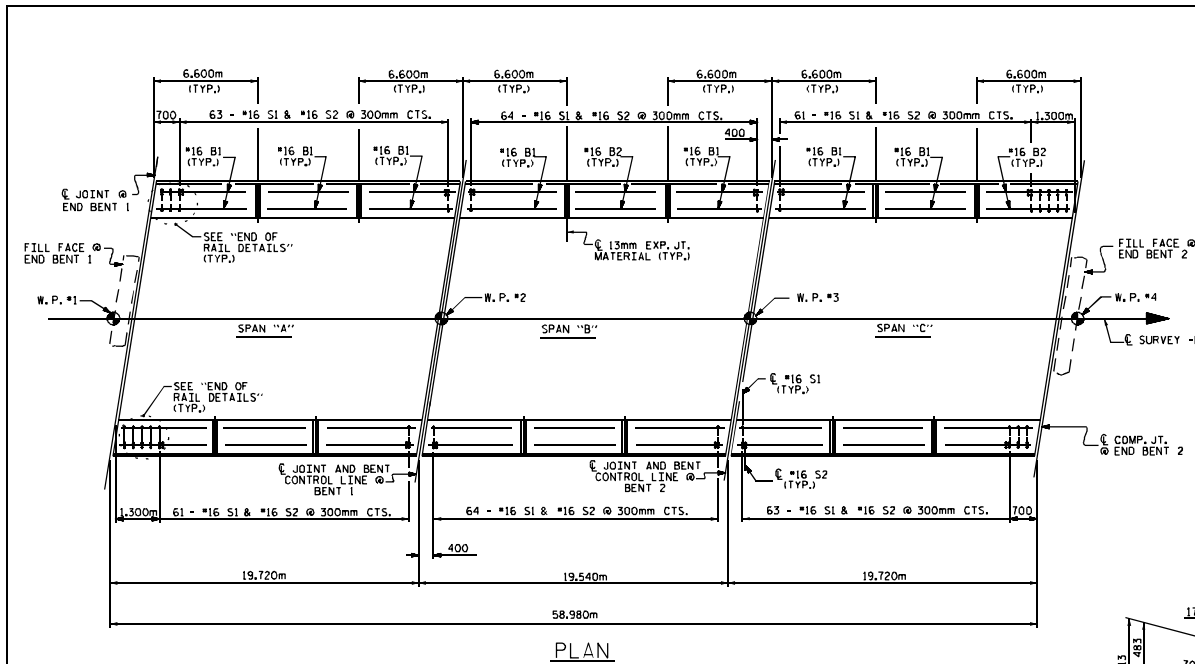


FIGURE 6 - 26 M



NOTES

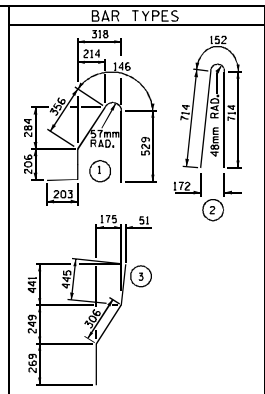
THE BARRIER RAIL IN EACH SPAN SHALL NOT BE CAST UNTIL ALL SLAB CONCRETE IN THAT SPAN HAS BEEN CAST AND HAS REACHED A MINIMUM COMPRESSIVE STRENGTH OF 20.7 MPa.

WHEN COMPRESSION JOINT SEAL OR EVAZOTE JOINT SEAL IS REQUIRED, THE JOINT IN THE DECK SHALL BE SAWED PRIOR TO THE CASTING OF BARRIER RAIL.

ALL REINFORCING STEEL IN BARRIER RAILS SHALL BE EPOXY COATED.

THE *16 S3 AND *16 S4 BARS SHALL BE INSTALLED, USING AN ADHESIVE ANCHORING SYSTEM, AFTER SAWING THE JOINT. THE YIELD LOAD FOR THE *16 S3 AND *16 S4 BARS IS 82.7 KN. FIELD TESTING FOR THE ADHESIVE BONDING SYSTEM IS NOT REQUIRED, FOR ADHESIVELY ANCHORED ANCHOR BOLTS OR DOWELS, SEE SPECIAL PROVISIONS.

VERTICAL GROOVED CONTRACTION JOINTS, 12mm IN DEPTH, SHALL BE TOOLED IN ALL EXPOSED FACES OF THE BARRIER RAIL AND IN ACCORDANCE WITH ARTICLE 825-10(B) OF THE STANDARD SPECIFICATIONS, THE CONTRACTION JOINT SHALL BE LOCATED AT EACH THIRD POINT BETWEEN BARRIER RAIL EXPANSION JOINTS. ONLY ONE CONTRACTION JOINT IS REQUIRED AT MIDPOINT OF BARRIER RAIL SEGMENTS LESS THAN 6.1m IN LENGTH AND NO CONTRACTION JOINTS ARE REQUIRED FOR THOSE SEGMENTS LESS THAN 3.5m IN LENGTH.

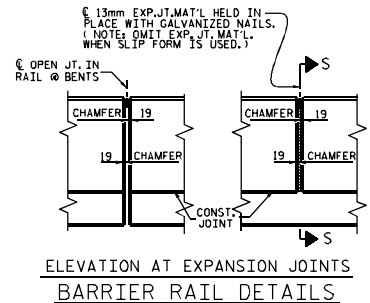
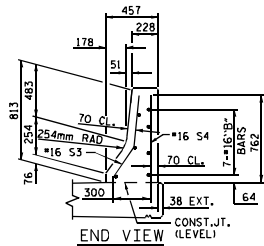
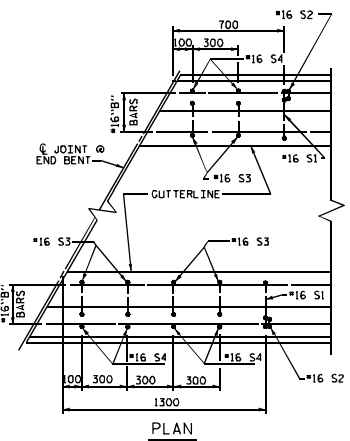
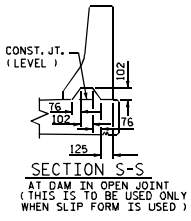
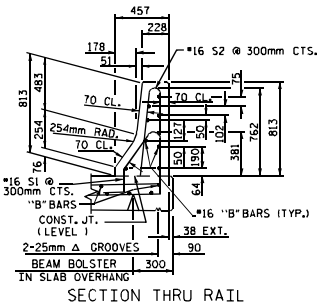


ALL BAR DIMENSIONS ARE OUT TO OUT

BILL OF MATERIAL
FOR CONCRETE BARRIER RAIL ONLY

BAR NO.	SIZE	TYPE	LENGTH	WEIGHT	
* S1	376	*16	1	1440	840
* S2	376	*16	2	1580	922
* S3	12	*16	3	1020	19
* S4	12	*16	STR	960	18
* B1	128	*16	STR	6400	1271
* B2	16	*16	STR	6200	154

* EPOXY COATED REINFORCING STEEL	3,324 kg
CLASS AA CONCRETE	27.2 CU. METER
CONCRETE BARRIER RAIL	117,960 METERS



FOR ADHESIVE ANCHORING AT SAWED JOINTS

ASSEMBLED BY :	DATE :
CHECKED BY :	DATE :
DRAWN BY : ARB 5/87	REV. 10/17/00 PWW/LES
CHECKED BY : SJD 9/87	REV. 3/7/03R PWW/JTE
	REV. 5/1/06 TLA/GM

PROJECT NO. EXAMPLE
COUNTY _____
STATION: _____

REVISIONS						SHEET NO.
NO.	BY	DATE	NO.	BY	DATE	10/16/06
1			3			
2			4			

STD. NO. CBRISM