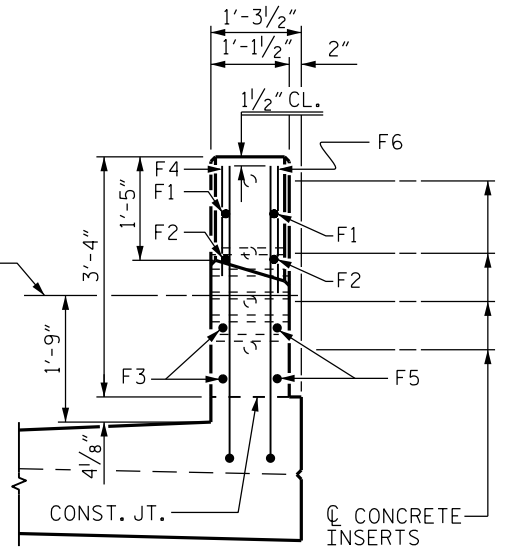


ELEVATION



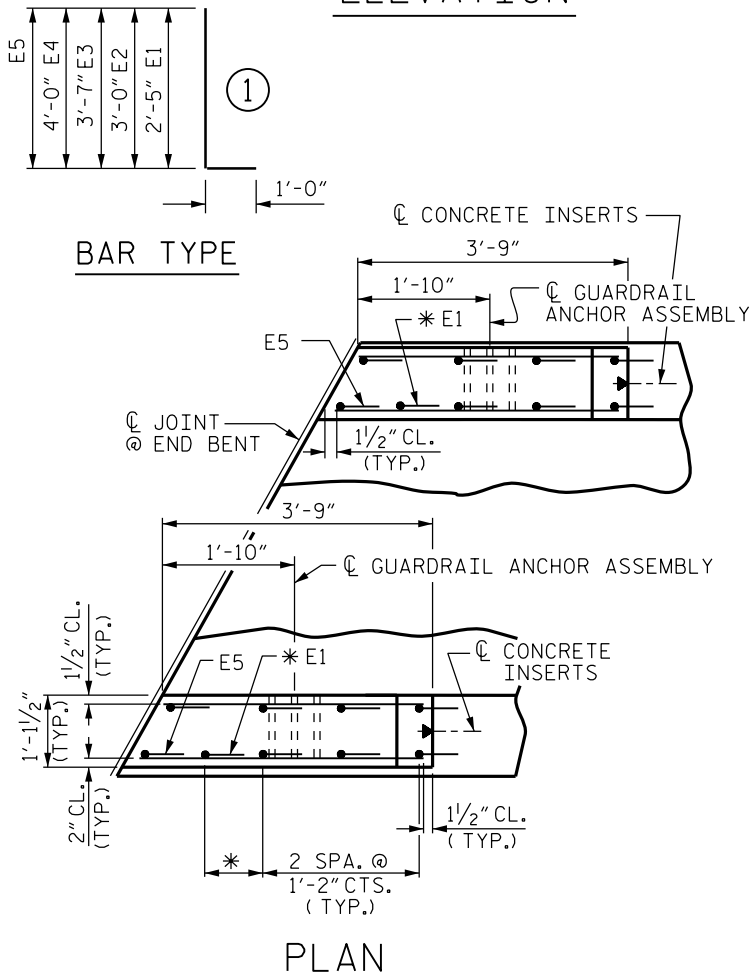
END VIEW

NOTES TO DESIGNER & DETAILER:

SKETCHES SHOWN ARE FOR SKEWS GREATER THAN 90°. FOR STRUCTURES WITH SKEWS 90° OR LESS, THESE SKETCHES (PLAN, ELEVATION, AND END VIEWS) WILL NEED TO BE MODIFIED.

THE "F" BARS AND THE E5 BAR (IF NEEDED) LENGTHS ARE TO BE CALCULATED FOR EACH SKEW ANGLE.

WHEN THE DECK SUPERELEVATION EXCEEDS 5%, SPECIAL ATTENTION IS NEEDED TO MAINTAIN PROPER EMBEDMENT OF RAIL POST ANCHOR ASSEMBLIES AND "E" BARS IN THE END POST ON THE HIGH SIDE OF THE DECK.



PLAN

* CENTER E1 BETWEEN E5 AND E2 IF E5 BAR IS NEEDED TO REINFORCE LONG CORNER.

THREE BAR METAL RAIL					
BILL FOR ONE END POST					
BAR	NO.	SIZE	TYPE	LENGTH	WEIGHT (LBS)
E1	2	#7	1	3'-5"	14
E2	2	#7	1	4'-0"	16
E3	2	#7	1	4'-7"	19
E4	2	#7	1	5'-0"	20
E5		#7	1		
F1		#6	STR		
F2		#6	STR		
F3		#6	STR		
F4		#6	STR		
F5		#6	STR		
F6		#6	STR		
CLASS AA CONCRETE					CU. YDS.

END POST FOR THREE BAR METAL RAIL

FIGURE 6 - 32