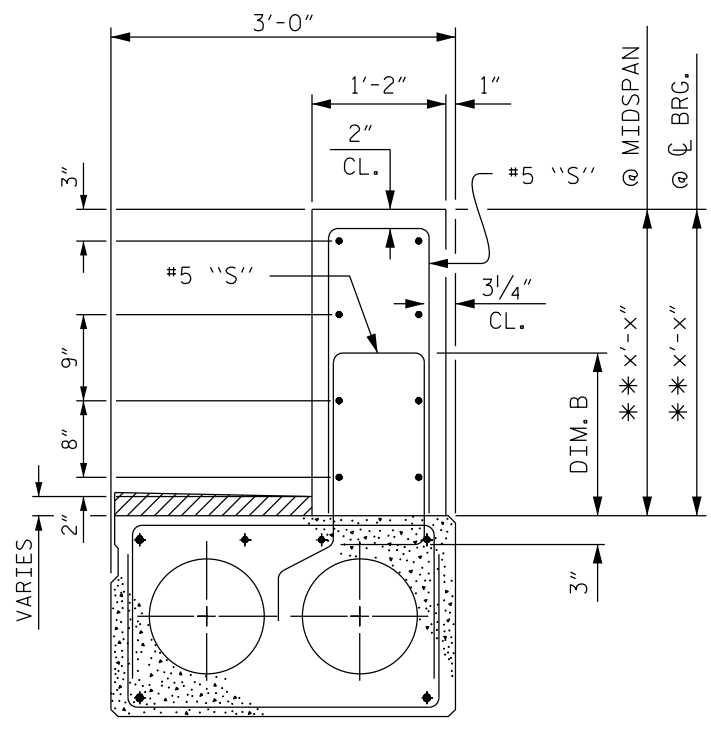


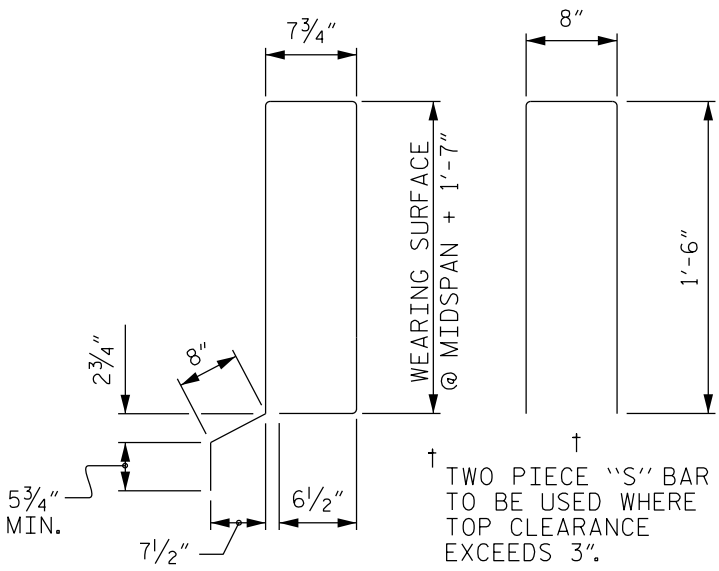
DIM. A = WEARING SURFACE @ MIDSPAN + 1'-4"

EXTERIOR CORED SLAB SECTION- ONE BAR METAL RAIL
(STRAND LAYOUT NOT SHOWN)

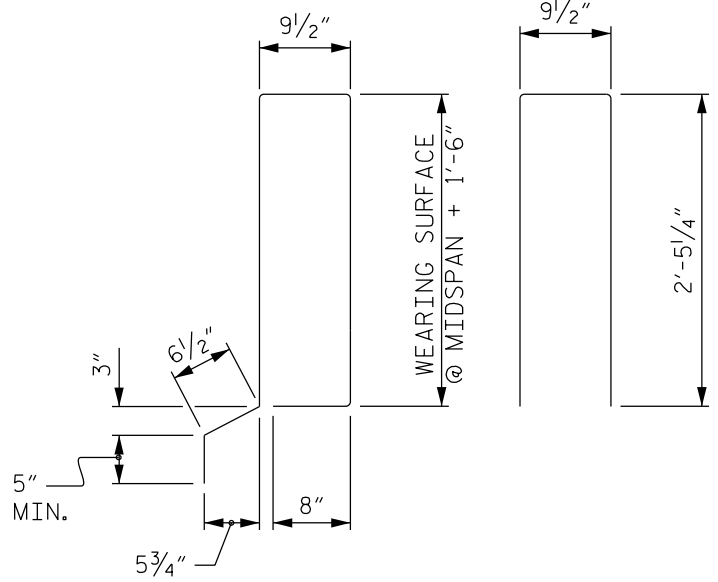


DIM. B = WEARING SURFACE @ MIDSPAN + 1'-3"

EXTERIOR CORED SLAB SECTION- TWO BAR METAL RAIL
(STRAND LAYOUT NOT SHOWN)



'S' BAR DETAIL- ONE BAR METAL RAIL

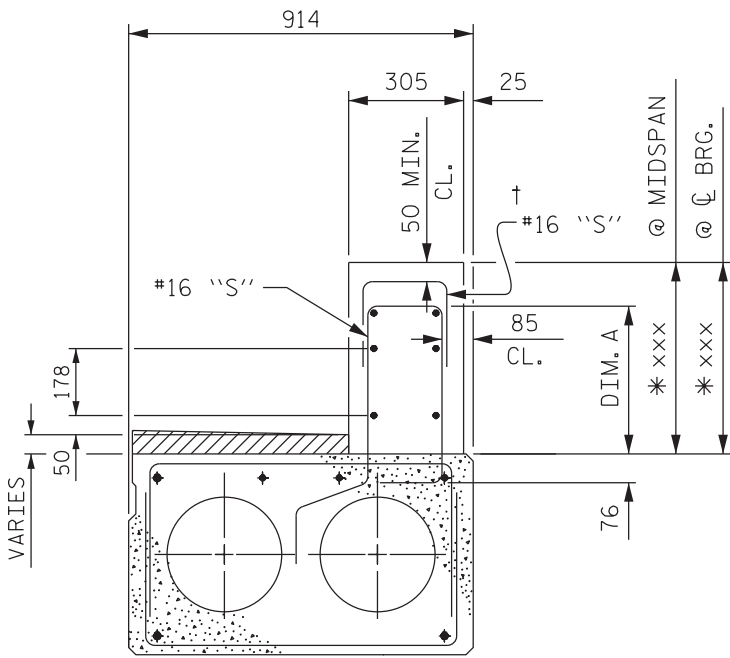


'S' BAR DETAILS - TWO BAR METAL RAIL

NOTE TO DETAILER:

- * DIMENSION = WEARING SURFACE @ MIDSPAN OR CL BEARING + 1'-6"
- ** DIMENSION = WEARING SURFACE @ MIDSPAN OR CL BEARING + 2'-6"

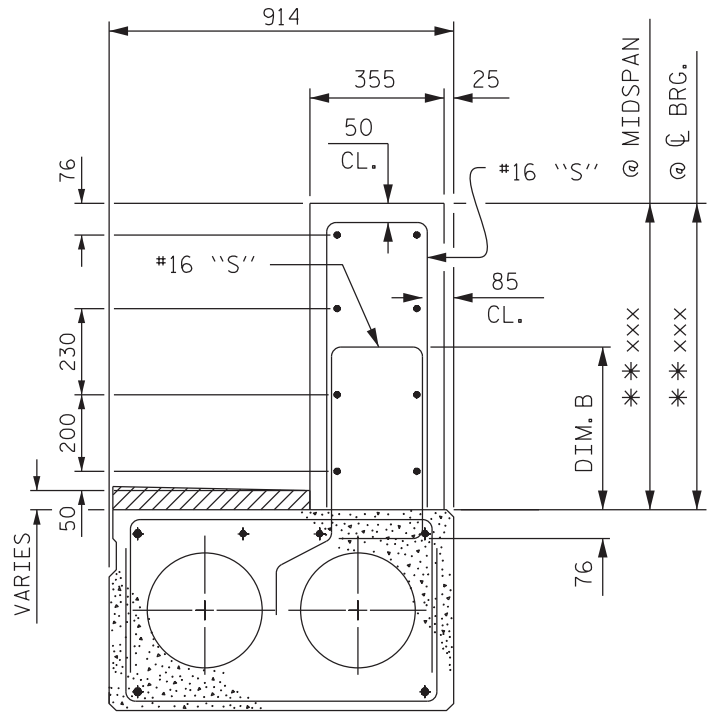
ONE & TWO BAR METAL RAIL ON CORED SLABS



DIM. A = WEARING SURFACE @ MIDSPAN + 407mm

EXTERIOR CORED SLAB SECTION- ONE BAR METAL RAIL

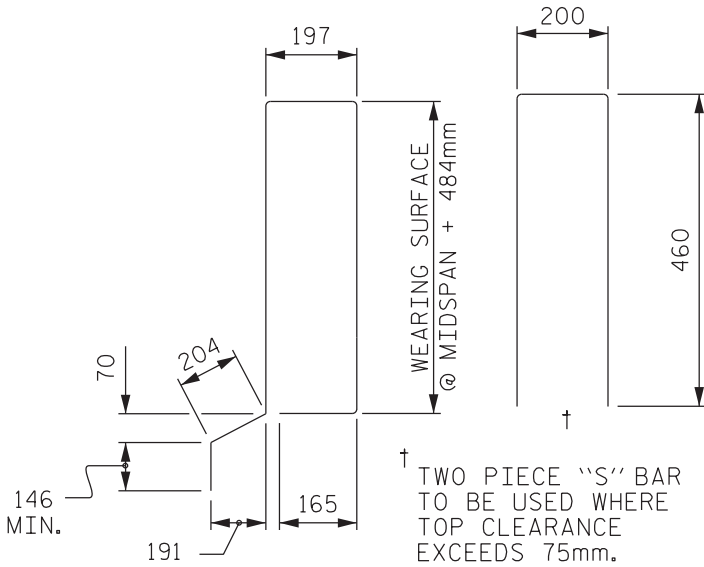
(STRAND LAYOUT NOT SHOWN)



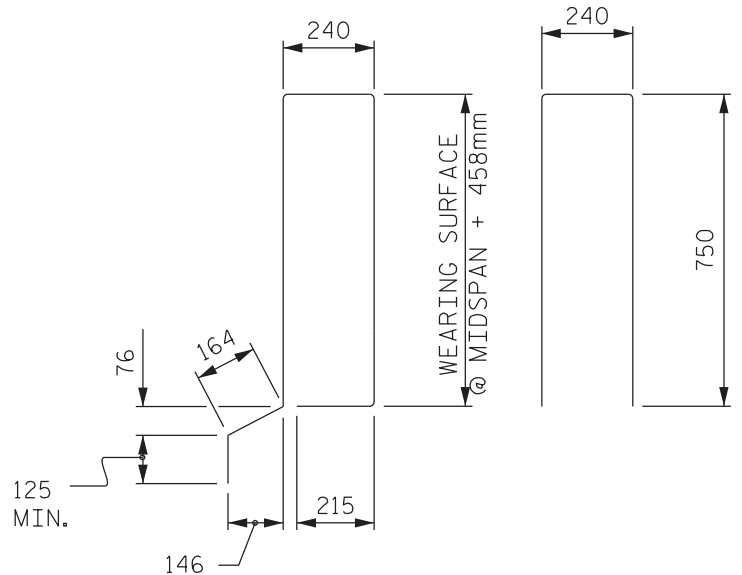
DIM. B = WEARING SURFACE @ MIDSPAN + 382mm

EXTERIOR CORED SLAB SECTION- TWO BAR METAL RAIL

(STRAND LAYOUT NOT SHOWN)



'S' BAR DETAIL - ONE BAR METAL RAIL



'S' BAR DETAILS - TWO BAR METAL RAIL

NOTE TO DETAILER:

- * DIMENSION = WEARING SURFACE @ MIDSPAN OR $\text{\textcircled{C}}$ BEARING + 457mm
- ** DIMENSION = WEARING SURFACE @ MIDSPAN OR $\text{\textcircled{C}}$ BEARING + 762mm

ONE & TWO BAR METAL RAIL ON CORED SLABS