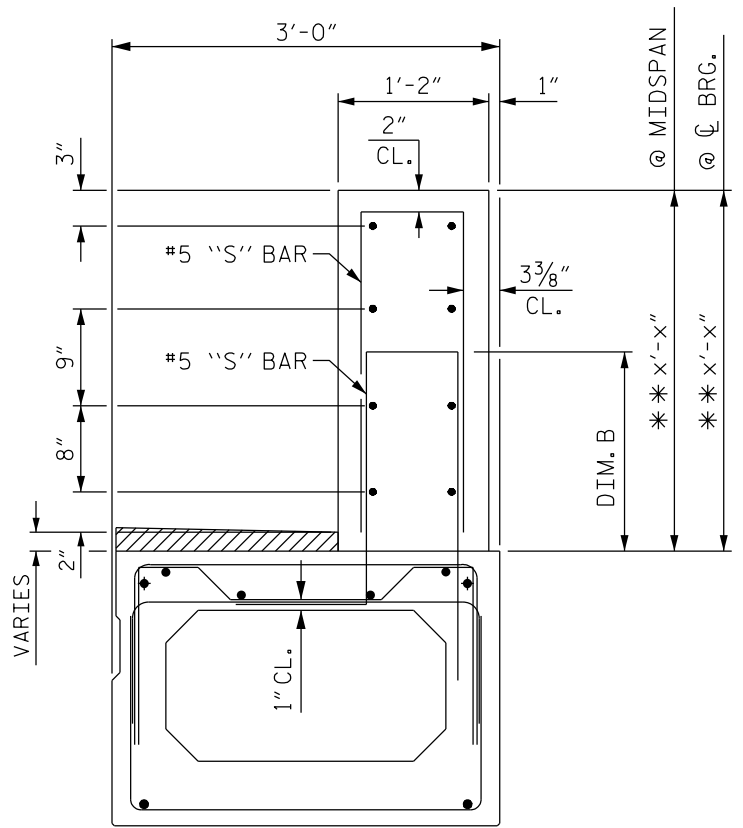


DIM. A = WEARING SURFACE @ MIDSPAN + 1'-4"

EXTERIOR BOX BEAM SECTION- ONE BAR METAL RAIL

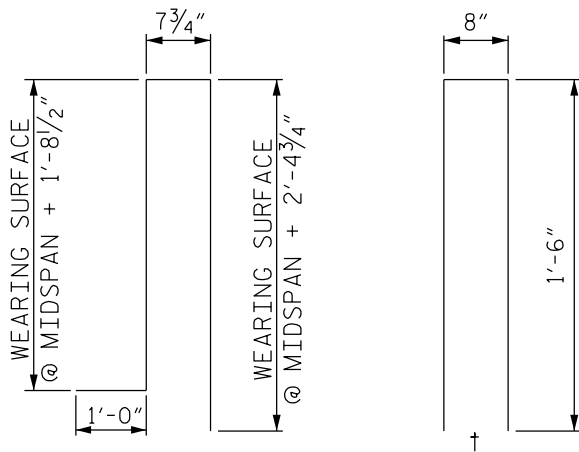
(STRAND LAYOUT NOT SHOWN)



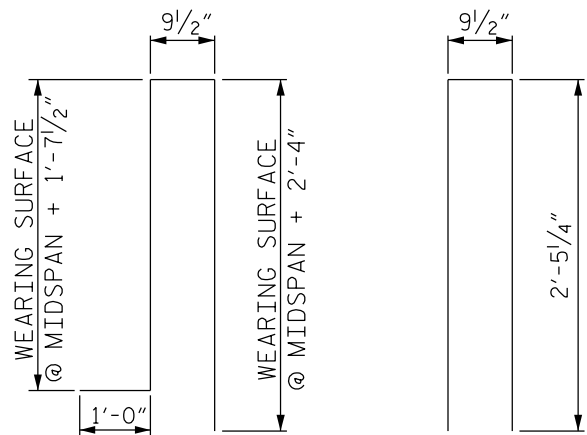
DIM. B = WEARING SURFACE @ MIDSPAN + 1'-3"

EXTERIOR BOX BEAM SECTION- TWO BAR METAL RAIL

(STRAND LAYOUT NOT SHOWN)



'S' BAR DETAIL- ONE BAR METAL RAIL



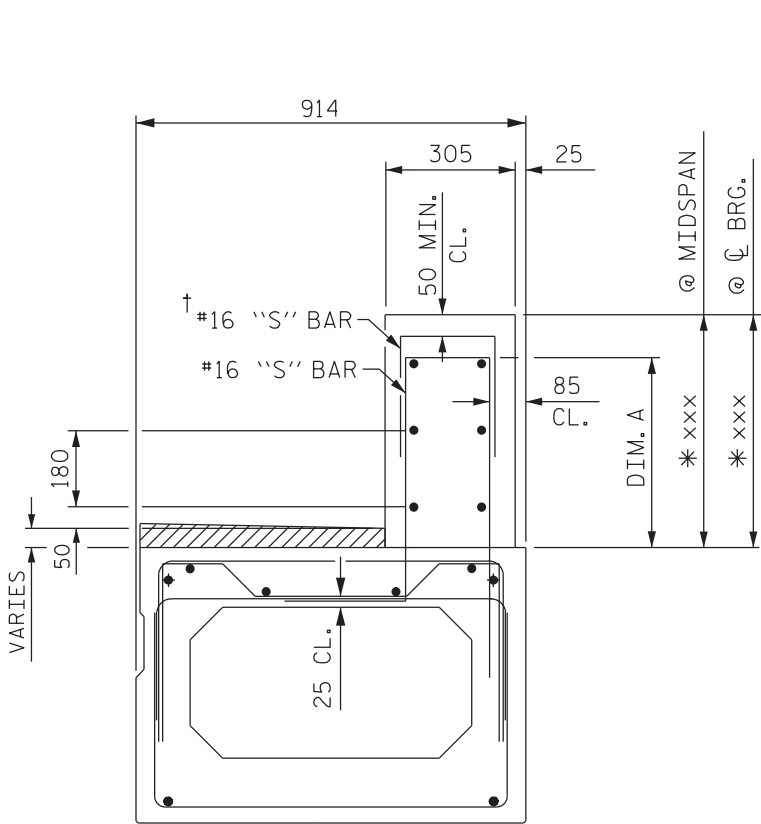
'S' BAR DETAILS- TWO BAR METAL RAIL

NOTE TO DETAILER:

† TWO PIECE 'S' BAR TO BE USED WHERE TOP CLEARANCE EXCEEDS 3".

* DIMENSION = WEARING SURFACE @ MIDSPAN OR CL BEARING + 1'-6"
 ** DIMENSION = WEARING SURFACE @ MIDSPAN OR CL BEARING + 2'-6"

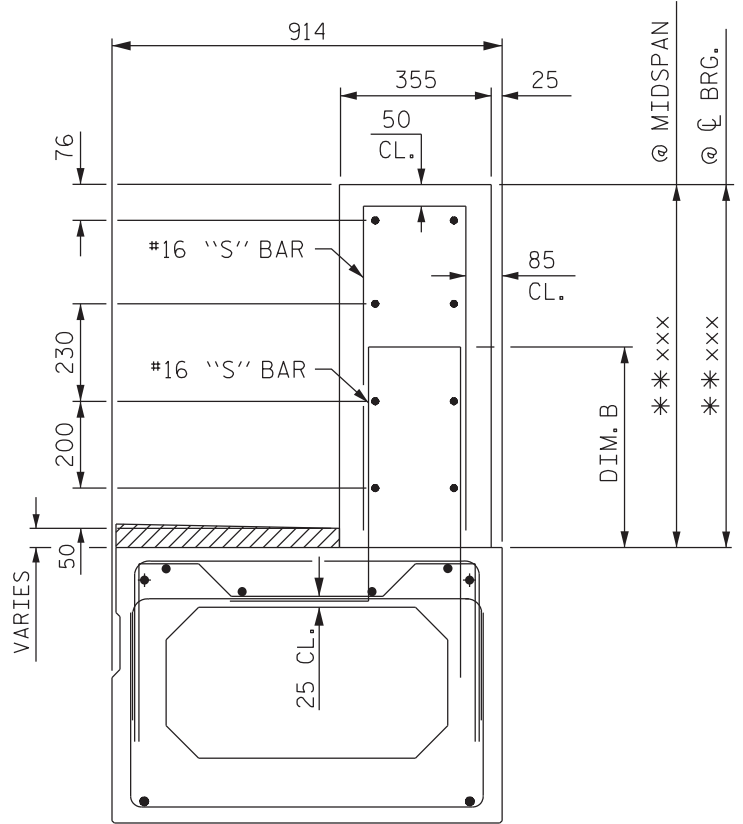
ONE & TWO BAR METAL RAILS ON BOX BEAMS



DIM. A = WEARING SURFACE @ MIDSPAN + 407mm

EXTERIOR BOX BEAM SECTION- ONE BAR METAL RAIL

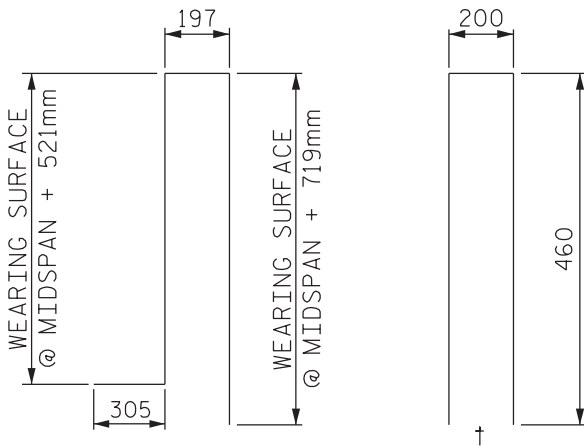
(STRAND LAYOUT NOT SHOWN)



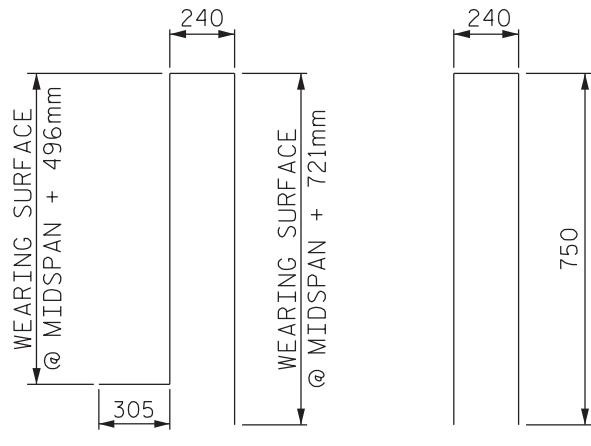
DIM. B = WEARING SURFACE @ MIDSPAN + 382mm

EXTERIOR BOX BEAM SECTION- TWO BAR METAL RAIL

(STRAND LAYOUT NOT SHOWN)



"S" BAR DETAIL- ONE BAR METAL RAIL



"S" BAR DETAILS- TWO BAR METAL RAIL

NOTE TO DETAILER:

† TWO PIECE "S" BAR TO BE USED WHERE TOP CLEARANCE EXCEEDS 75mm.

- * DIMENSION = WEARING SURFACE @ MIDSPAN OR C BEARING + 457mm
- ** DIMENSION = WEARING SURFACE @ MIDSPAN OR C BEARING + 762mm

ONE AND TWO BAR METAL RAILS ON BOX BEAMS