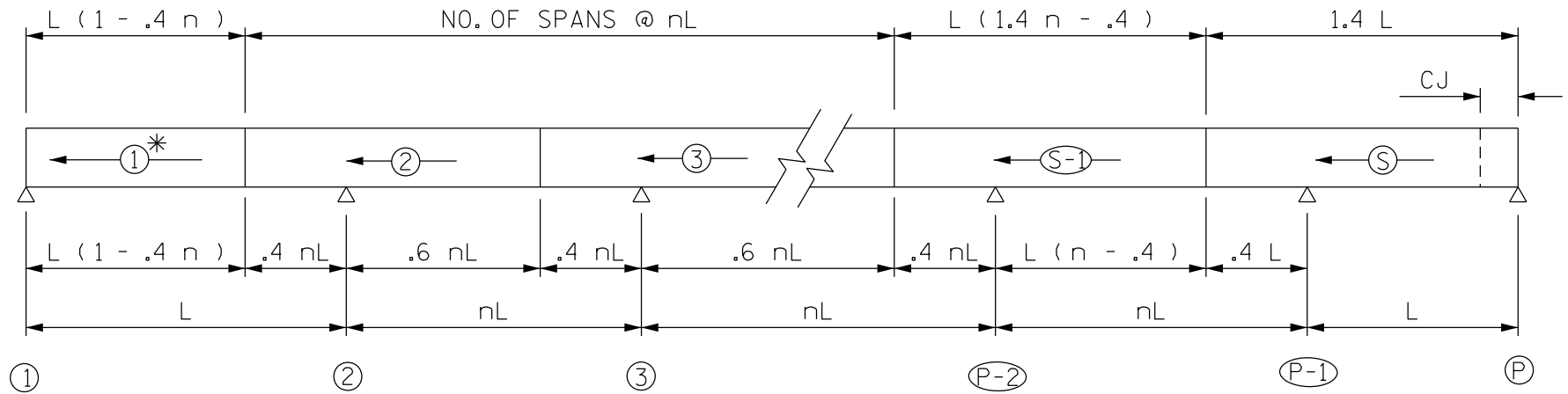


FIGURE 6 - 39



IDEAL POUR - ANY NUMBER OF SPANS

KEY

← ⊕ = INDICATES POUR NUMBER AND DIRECTION OF POUR

n = RATIO OF $\frac{\text{INTERIOR SPAN}}{\text{EXTERIOR SPAN}}$

S = TOTAL NUMBER OF SPAN

CJ = CONSTRUCTION JOINT
(SEE DESIGN MANUAL SECTION 6.2.2.8)

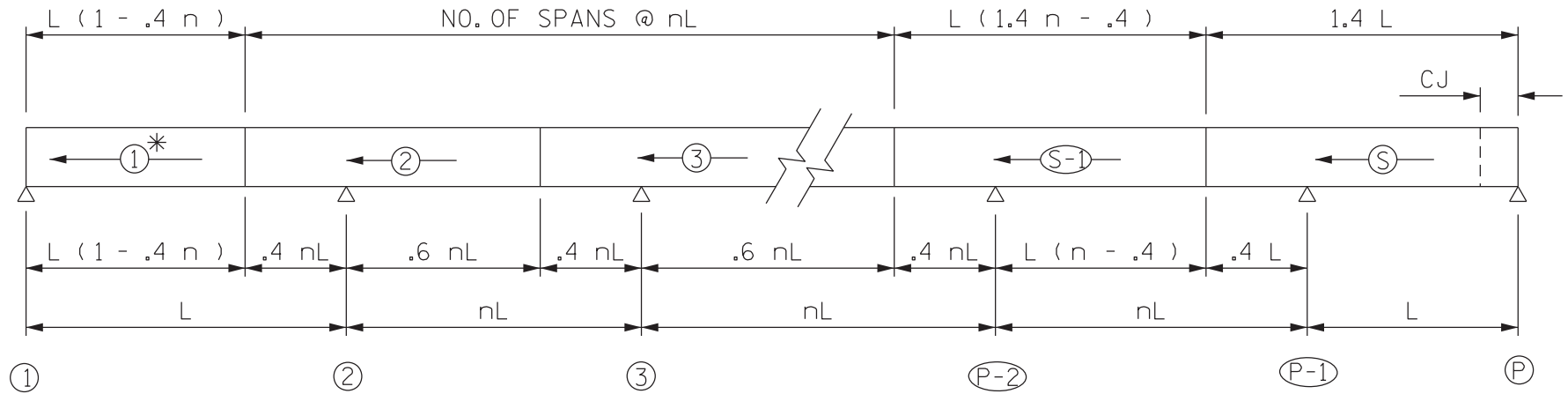
P = TOTAL NUMBER OF SUPPORTS

* = IF THE CONTRACTOR CHOOSES TO REVERSE THE DIRECTION OF POUR #1 A CONSTRUCTION JOINT (CJ) WILL BE REQUIRED 4'-0" FROM THE JOINT SEAL.

L = LENGTH OF EXTERIOR SPAN

WISCONSIN DOT POURING SEQUENCE

FIGURE 6 - 39 M



IDEAL POUR - ANY NUMBER OF SPANS

KEY

← ⊕ = INDICATES POUR NUMBER AND DIRECTION OF POUR

n = RATIO OF $\frac{\text{INTERIOR SPAN}}{\text{EXTERIOR SPAN}}$

S = TOTAL NUMBER OF SPAN

CJ = CONSTRUCTION JOINT
(SEE DESIGN MANUAL SECTION 6.2.2.8)

P = TOTAL NUMBER OF SUPPORTS

* = IF THE CONTRACTOR CHOOSES TO REVERSE THE DIRECTION OF POUR #1 A CONSTRUCTION JOINT (CJ) WILL BE REQUIRED 1.220m FROM THE JOINT SEAL.

L = LENGTH OF EXTERIOR SPAN

WISCONSIN DOT POURING SEQUENCE