

NOTES TO DETAILER:

DIM. (A) TO BE DETERMINED BY THE DETAILER SO AS NOT TO INTERFERE WITH THE BEARING STIFFENER.

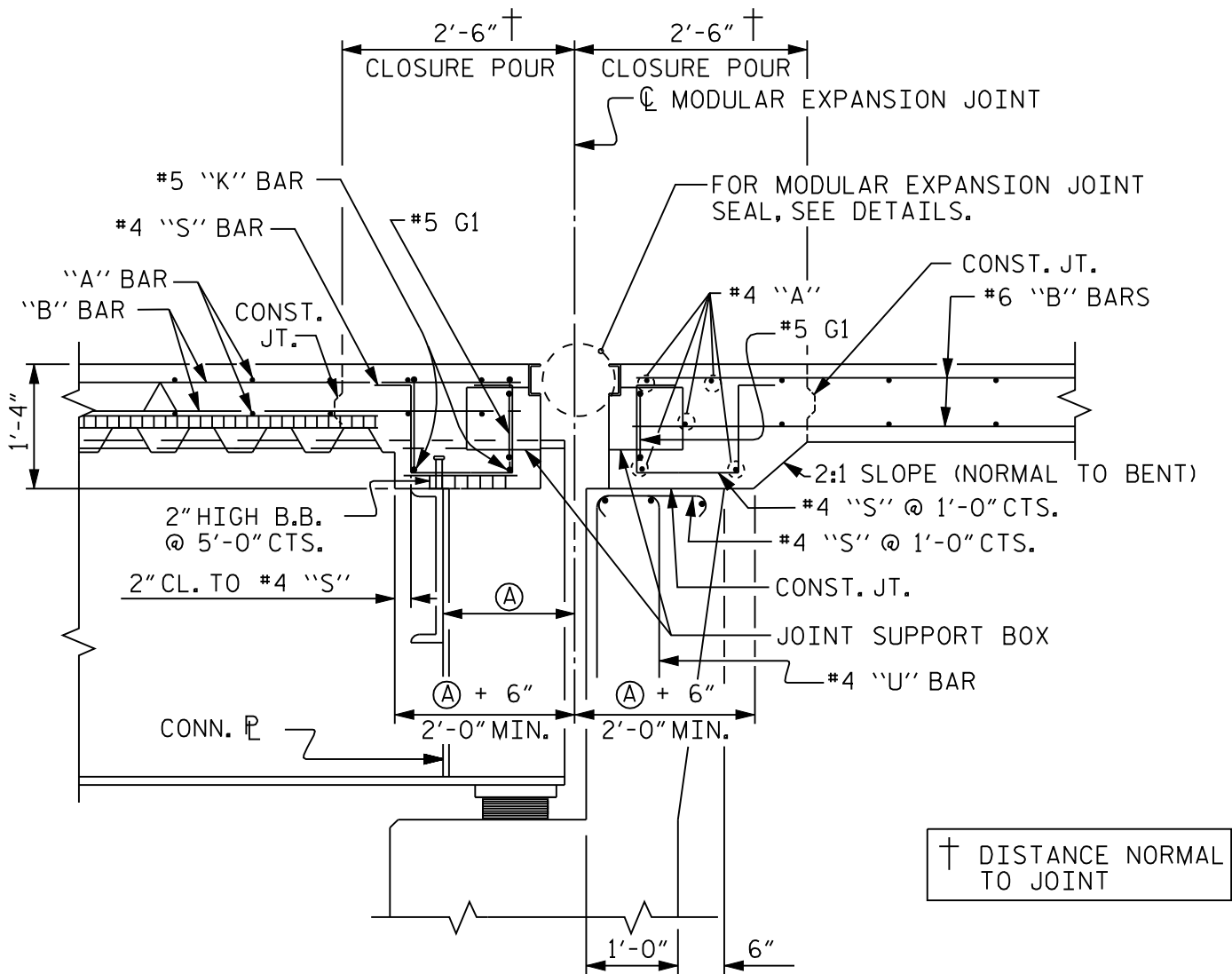
#5 "G" BARS IN DECK AND APPROACH SLAB SHALL BE EPOXY COATED.

INCLUDE CONCRETE FOR CLOSURE POURS IN SPAN AND APPROACH SLAB QUANTITIES.

NOTES ON PLANS:

THE "B" BARS IN THE DECK SLAB MAY BE CUT AS DIRECTED BY THE ENGINEER TO CLEAR THE MODULAR JOINT SUPPORT BOXES.

THE #6 "B" BARS IN THE APPROACH SLAB MAY BE CUT AS DIRECTED BY THE ENGINEER TO CLEAR THE MODULAR JOINT SUPPORT BOXES.



END BENT JOINT DETAILS

FOR STEEL SUPERSTRUCTURE WITH MODULAR EXPANSION JOINT

**FIGURE 6 - 57**

NOTES TO DETAILER:

DIM. (A) TO BE DETERMINED BY THE DETAILER SO AS NOT TO INTERFERE WITH THE BEARING STIFFENER.

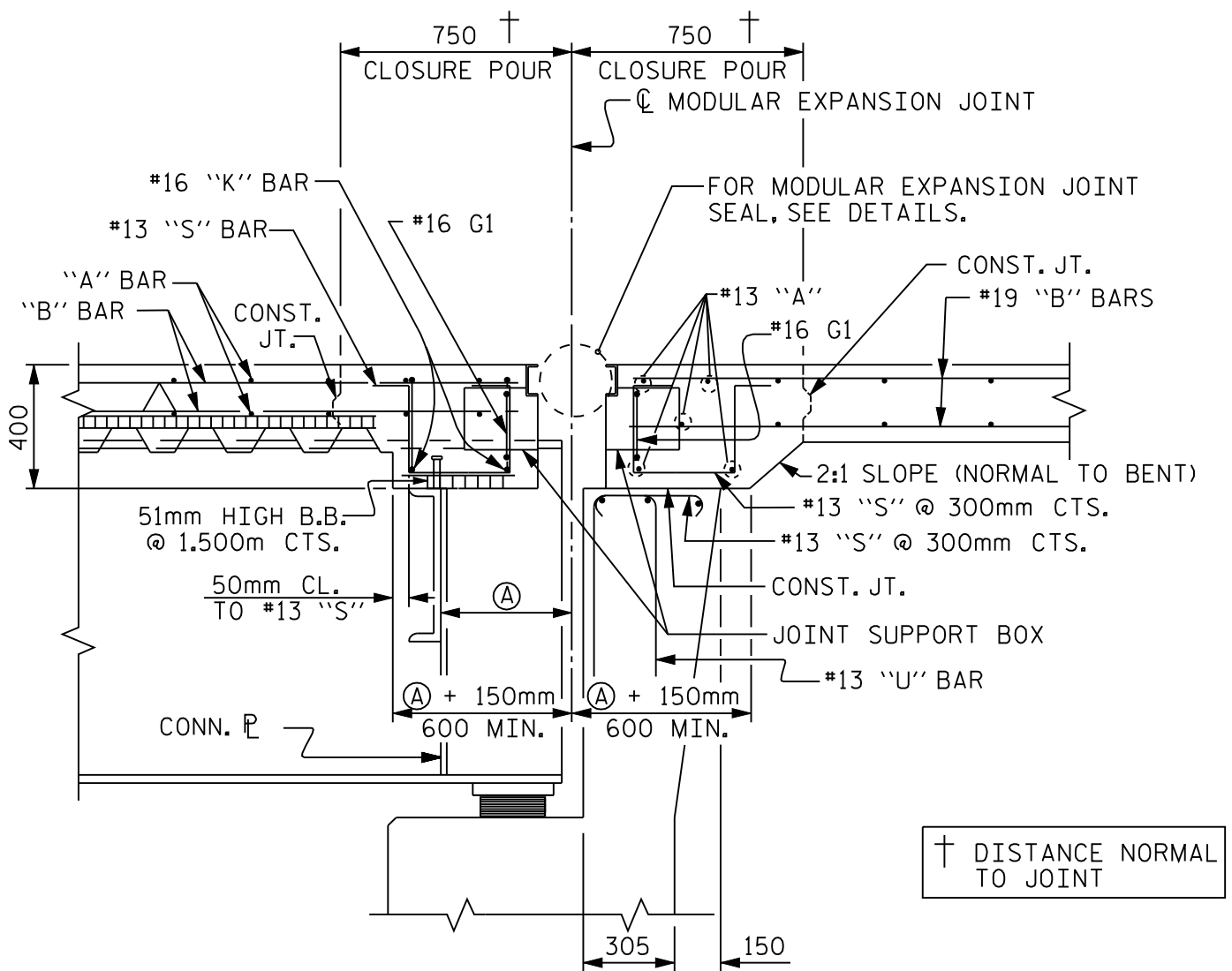
#16 "G" BARS IN DECK AND APPROACH SLAB SHALL BE EPOXY COATED.

INCLUDE CONCRETE FOR CLOSURE POURS IN SPAN AND APPROACH SLAB QUANTITIES.

NOTES ON PLANS:

THE "B" BARS IN THE DECK SLAB MAY BE CUT AS DIRECTED BY THE ENGINEER TO CLEAR THE MODULAR JOINT SUPPORT BOXES.

THE #19 "B" BARS IN THE APPROACH SLAB MAY BE CUT AS DIRECTED BY THE ENGINEER TO CLEAR THE MODULAR JOINT SUPPORT BOXES.



END BENT JOINT DETAILS

FOR STEEL SUPERSTRUCTURE WITH MODULAR EXPANSION JOINT

**FIGURE 6 - 57 M**