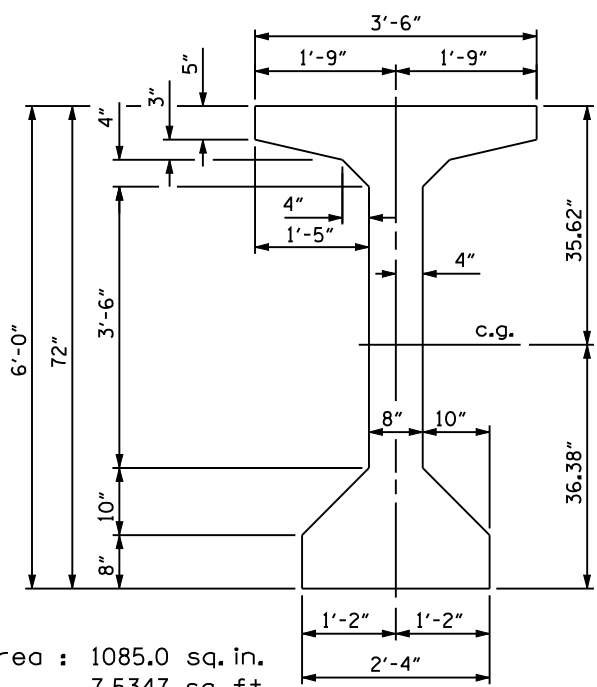


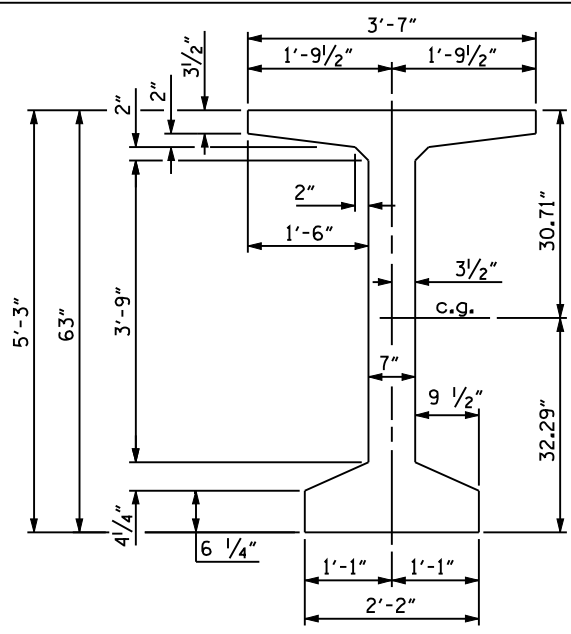
Area : 1013.0 sq. in.
7.0347 sq. ft.
Weight : 7.0347 x 150 = 1055 lbs/ft.
 $I_{XX} = 521,163 \text{ in.}^4$ $I_{YY} = 61,235 \text{ in.}^4$
 $C_T = 31.04 \text{ in.}$ $C_B = 31.96 \text{ in.}$
 $S_T = 16,788 \text{ in.}^3$ $S_B = 16,308 \text{ in.}^3$

AASHTO TYPE V GIRDER



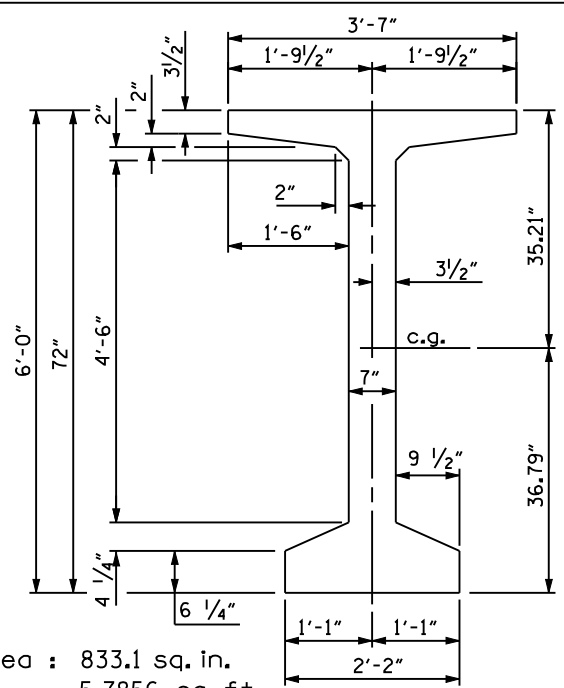
Area : 1085.0 sq. in.
7.5347 sq. ft.
Weight : 7.5347 x 150 = 1130 lbs/ft.
 $I_{XX} = 733,320 \text{ in.}^4$ $I_{YY} = 61,619 \text{ in.}^4$
 $C_T = 35.62 \text{ in.}$ $C_B = 36.38 \text{ in.}$
 $S_T = 20,588 \text{ in.}^3$ $S_B = 20,157 \text{ in.}^3$

AASHTO TYPE VI GIRDER



Area : 770.1 sq. in.
5.3481 sq. ft.
Weight : 5.3481 x 150 = 802 lbs/ft.
 $I_{XX} = 408,315 \text{ in.}^4$ $I_{YY} = 40,308 \text{ in.}^4$
 $C_T = 30.71 \text{ in.}$ $C_B = 32.29 \text{ in.}$
 $S_T = 13,296 \text{ in.}^3$ $S_B = 12,645 \text{ in.}^3$

63" MODIFIED BULB TEE

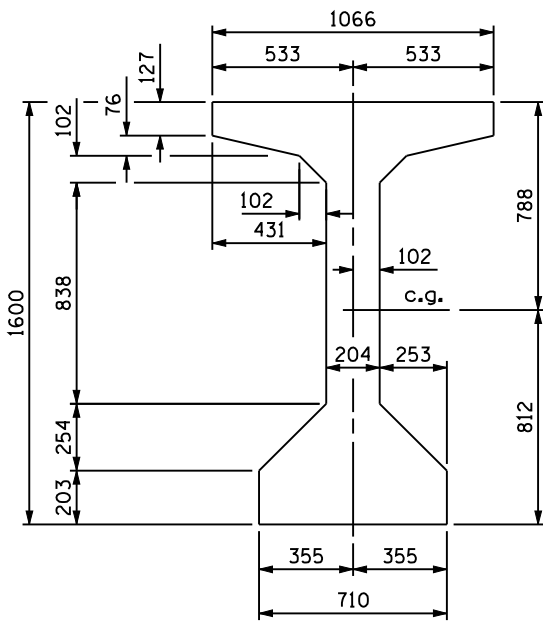


Area : 833.1 sq. in.
5.7856 sq. ft.
Weight : 5.7856 x 150 = 868 lbs/ft.
 $I_{XX} = 570,260 \text{ in.}^4$ $I_{YY} = 40,566 \text{ in.}^4$
 $C_T = 35.21 \text{ in.}$ $C_B = 36.79 \text{ in.}$
 $S_T = 16,196 \text{ in.}^3$ $S_B = 15,501 \text{ in.}^3$

72" MODIFIED BULB TEE

DIMENSIONS, AREA, & DESIGN DATA OF PRESTRESSED CONCRETE GIRDERS

FIGURE 6 - 67



Area : $653,547\text{mm}^2$
 0.654m^2

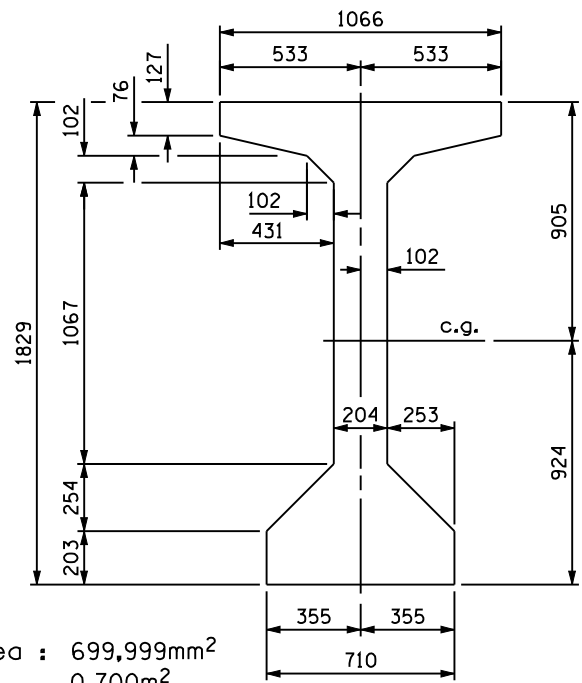
Weight : $0.654 \times 23.6 = 15.424 \text{ kN/m}$

$I_{XX} = 216.92 \times 10^9 \text{ mm}^4$ $I_{YY} = 25.49 \times 10^9 \text{ mm}^4$

$C_T = 788\text{mm}$ $C_B = 812\text{mm}$

$S_T = 275.11 \times 10^6 \text{ mm}^4$ $S_B = 267.25 \times 10^6 \text{ mm}^4$

AASHTO TYPE V GIRDER



Area : $699,999\text{mm}^2$
 0.700m^2

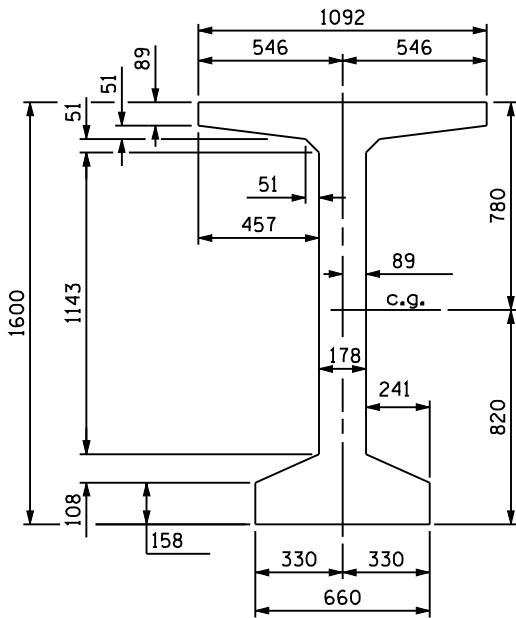
Weight : $0.700 \times 23.6 = 16.520 \text{ kN/m}$

$I_{XX} = 305.23 \times 10^9 \text{ mm}^4$ $I_{YY} = 25.65 \times 10^9 \text{ mm}^4$

$C_T = 905\text{mm}$ $C_B = 924\text{mm}$

$S_T = 337.37 \times 10^6 \text{ mm}^4$ $S_B = 330.31 \times 10^6 \text{ mm}^4$

AASHTO TYPE VI GIRDER



Area : $496,854\text{mm}^2$
 0.497m^2

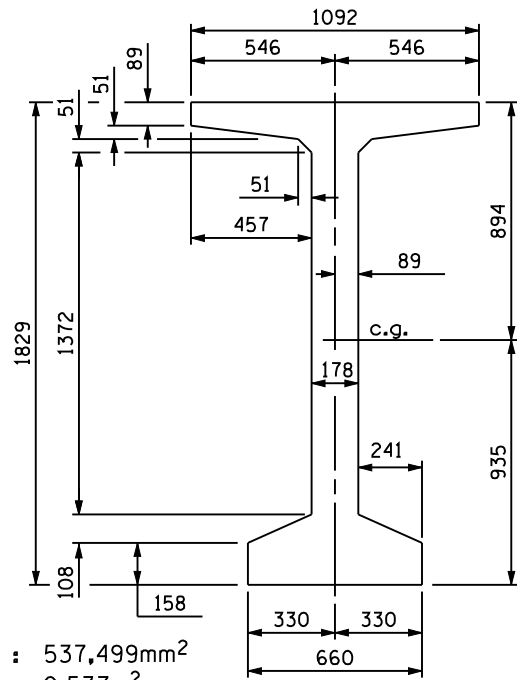
Weight : $0.497 \times 23.6 = 11.726 \text{ kN/m}$

$I_{XX} = 169.95 \times 10^9 \text{ mm}^4$ $I_{YY} = 16.78 \times 10^9 \text{ mm}^4$

$C_T = 780\text{mm}$ $C_B = 820\text{mm}$

$S_T = 217.88 \times 10^6 \text{ mm}^4$ $S_B = 207.22 \times 10^6 \text{ mm}^4$

1600mm MODIFIED BULB TEE



Area : $537,499\text{mm}^2$
 0.537m^2

Weight : $0.537 \times 23.6 = 12.685 \text{ kN/m}$

$I_{XX} = 237.36 \times 10^9 \text{ mm}^4$ $I_{YY} = 16.88 \times 10^9 \text{ mm}^4$

$C_T = 894\text{mm}$ $C_B = 935\text{mm}$

$S_T = 265.40 \times 10^6 \text{ mm}^4$ $S_B = 254.01 \times 10^6 \text{ mm}^4$

1829mm MODIFIED BULB TEE

DIMENSIONS, AREA, & DESIGN DATA OF PRESTRESSED CONCRETE GIRDERS

FIGURE 6 - 67 M