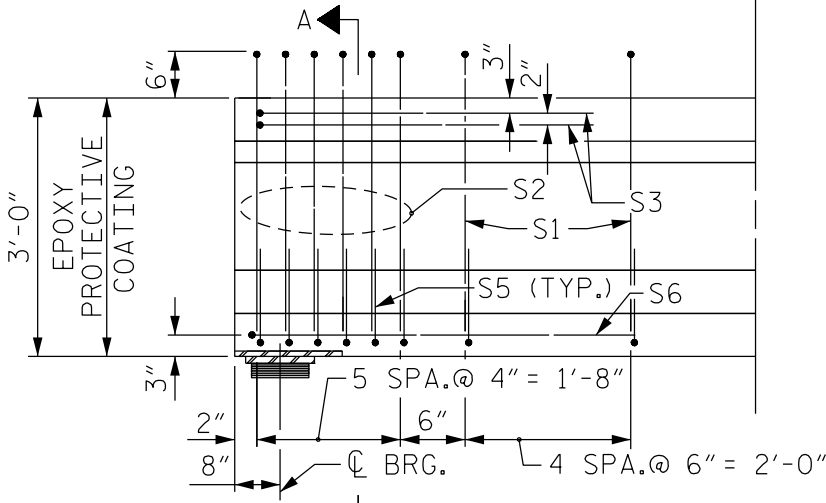
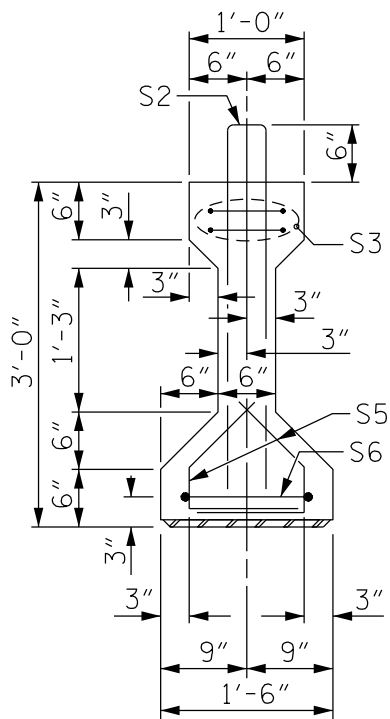


PLAN



ELEVATION

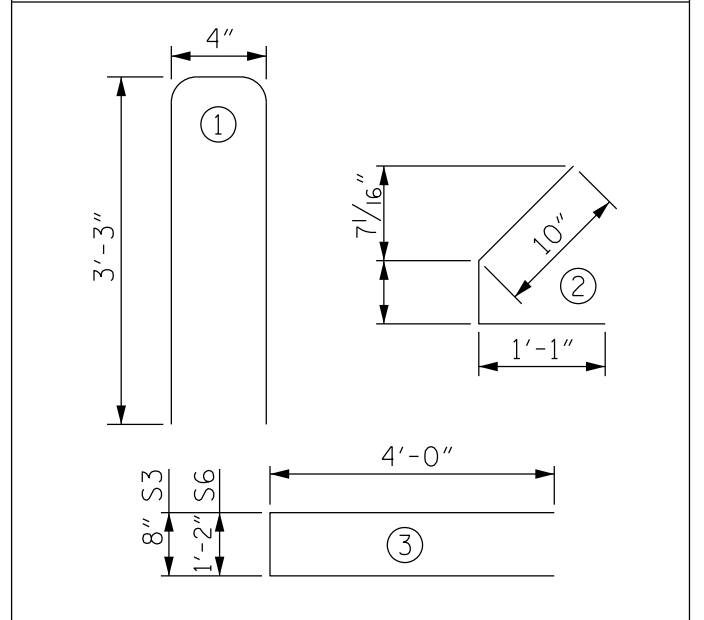


SECTION A-A

REINFORCING STEEL FOR ONE GIRDER					
BAR	NUMBER	SIZE	TYPE	LENGTH	WEIGHT
S1		#4	1	6'-10"	
S1		#4	1	6'-10"	
S2	12	#5	1	6'-10"	86
S3	4	#4	3	8'-8"	23
S5	44	#4	2	2'-4"	69
S6	2	#4	3	9'-2"	12

BAR TYPES

ALL BAR DIMENSIONS ARE OUT-TO-OUT

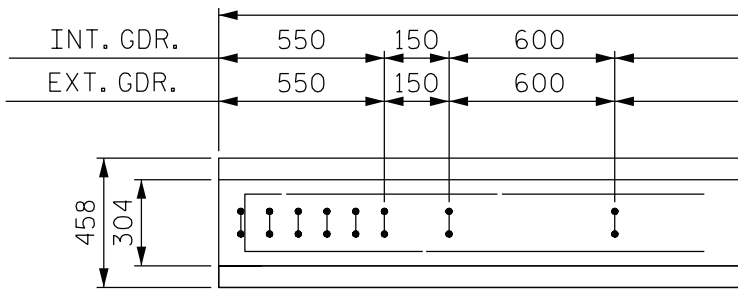


THE SPACING OF THE "S" BARS IN THE END OF THE GIRDER IS A MINIMUM. SHEAR REQUIREMENTS MAY DICTATE ADDITIONAL STIRRUPS IN THIS REGION.

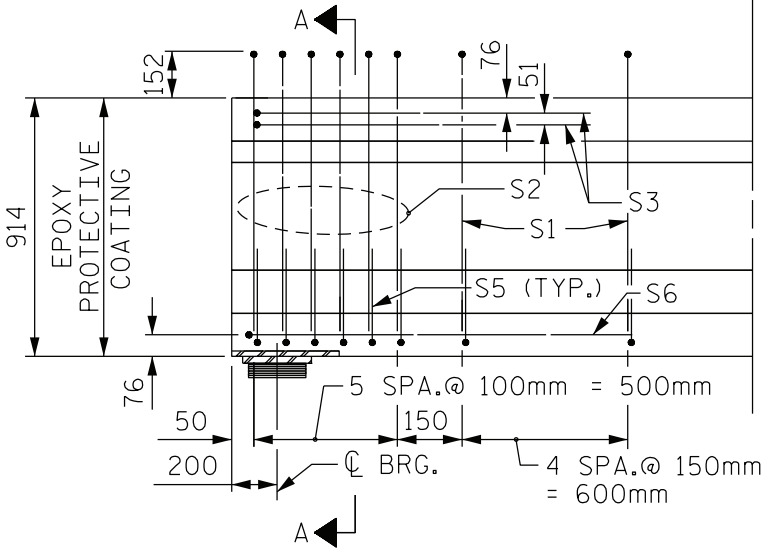
DETAILS FOR TYPE II PRESTRESSED GIRDER  
90° SKEW WITHOUT NOTCH

( TO BE USED ON STD. PCG1 )

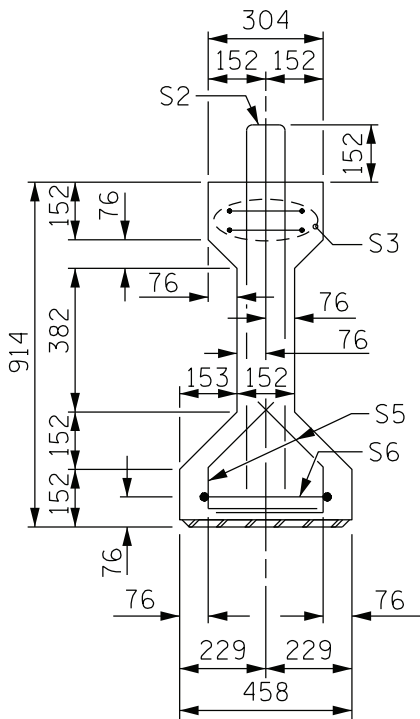
**FIGURE 6 - 68**



PLAN



ELEVATION

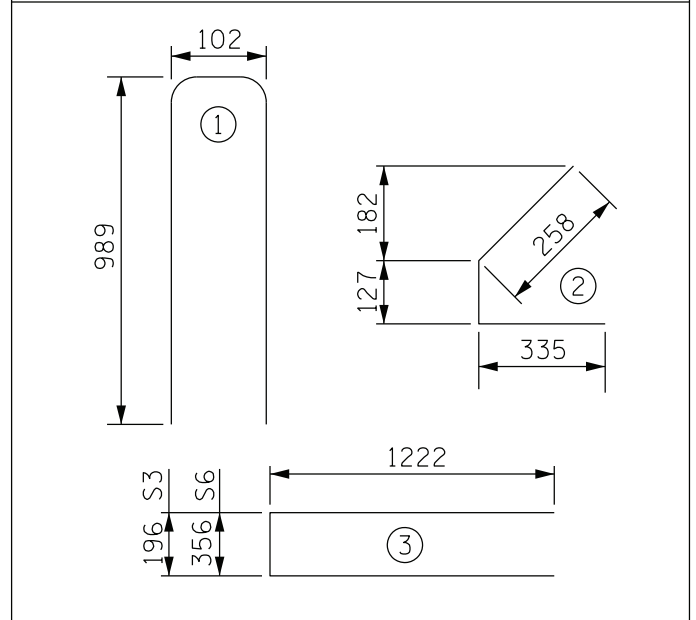


SECTION A-A

REINFORCING STEEL FOR ONE GIRDER					
BAR	NUMBER	SIZE	TYPE	LENGTH	WEIGHT
S1		#13	1	2080	
S1		#13	1	2080	
S2	12	#16	1	2080	39
S3	4	#13	3	2640	10
S5	44	#13	2	720	31
S6	2	#13	3	2800	6

BAR TYPES

ALL BAR DIMENSIONS ARE OUT-TO-OUT



THE SPACING OF THE "S" BARS IN THE END OF THE GIRDER IS A MINIMUM. SHEAR REQUIREMENTS MAY DICTATE ADDITIONAL STIRRUPS IN THIS REGION.

DETAILS FOR TYPE II PRESTRESSED GIRDER  
90° SKEW WITHOUT NOTCH

( TO BE USED ON STD. PCG1SM )

**FIGURE 6 - 68 M**