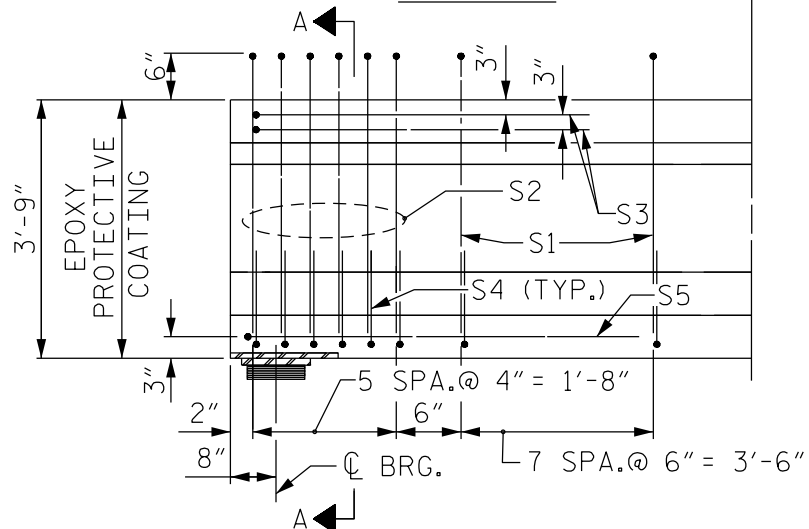
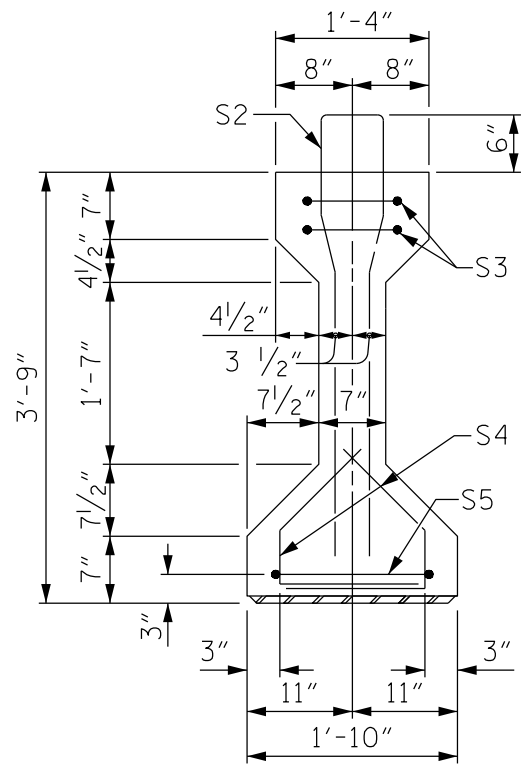


PLAN



ELEVATION

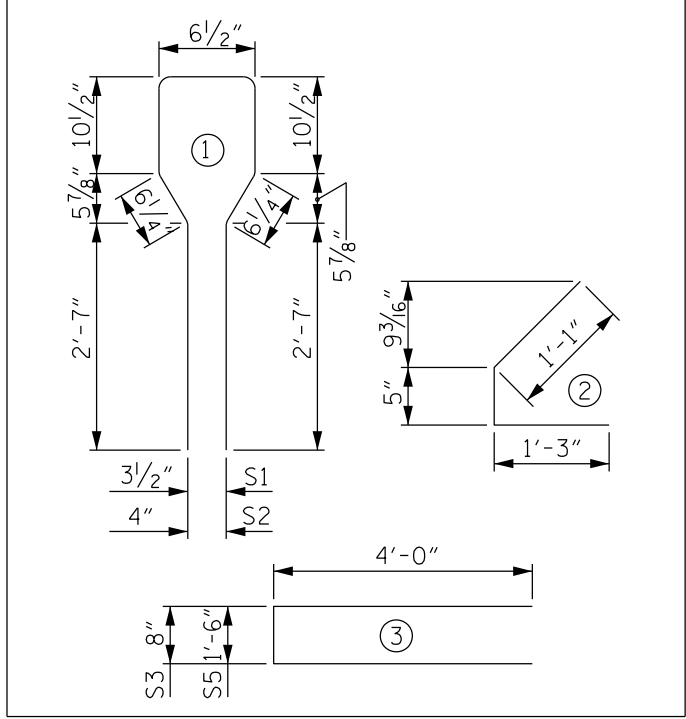


SECTION A-A

REINFORCING STEEL FOR ONE GIRDER					
BAR	NUMBER	SIZE	TYPE	LENGTH	WEIGHT
S1		#4	1	8'-6"	
S2	12	#6	1	8'-6"	153
S3	4	#4	3	8'-8"	23
S4	56	#4	2	2'-9"	103
S5	2	#4	3	9'-6"	13

BAR TYPES

ALL BAR DIMENSIONS ARE OUT-TO-OUT

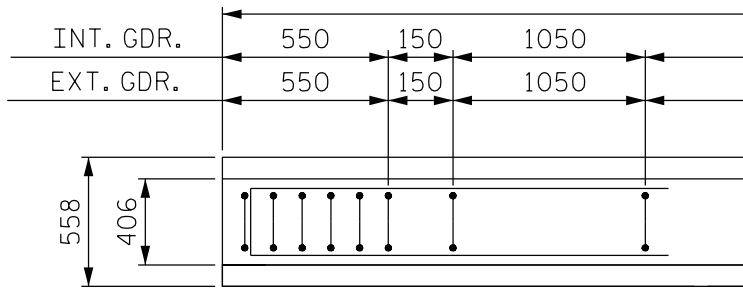


THE SPACING OF THE "S" BARS IN THE END OF THE GIRDER IS A MINIMUM. SHEAR REQUIREMENTS MAY DICTATE ADDITIONAL STIRRUPS IN THIS REGION.

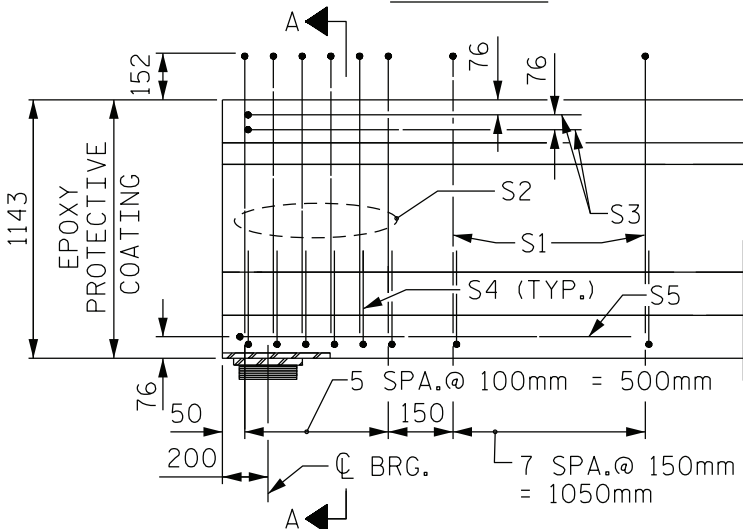
DETAILS FOR TYPE III PRESTRESSED GIRDER
90° SKEW WITHOUT NOTCH

(TO BE USED ON STD. PCG2)

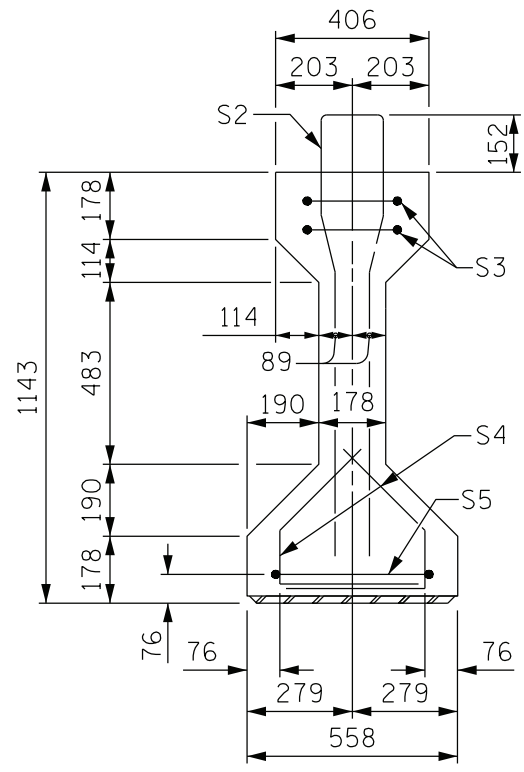
FIGURE 6 - 69



PLAN



ELEVATION

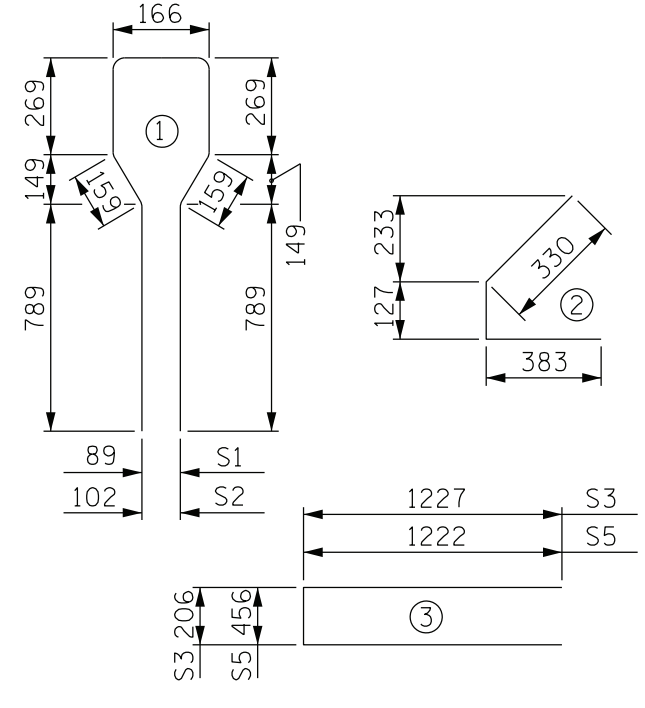


SECTION A-A

REINFORCING STEEL FOR ONE GIRDER					
BAR	NUMBER	SIZE	TYPE	LENGTH	WEIGHT
S1		#13	1	2600	
S2	12	#19	1	2600	70
S3	4	#13	3	2660	11
S4	56	#13	2	840	47
S5	2	#13	3	2900	6

BAR TYPES

ALL BAR DIMENSIONS ARE OUT-TO-OUT



THE SPACING OF THE "S" BARS IN THE END OF THE GIRDER IS A MINIMUM. SHEAR REQUIREMENTS MAY DICTATE ADDITIONAL STIRRUPS IN THIS REGION.

DETAILS FOR TYPE III PRESTRESSED GIRDER
90° SKEW WITHOUT NOTCH

(TO BE USED ON STD. PCG2SM)

FIGURE 6 - 69 M