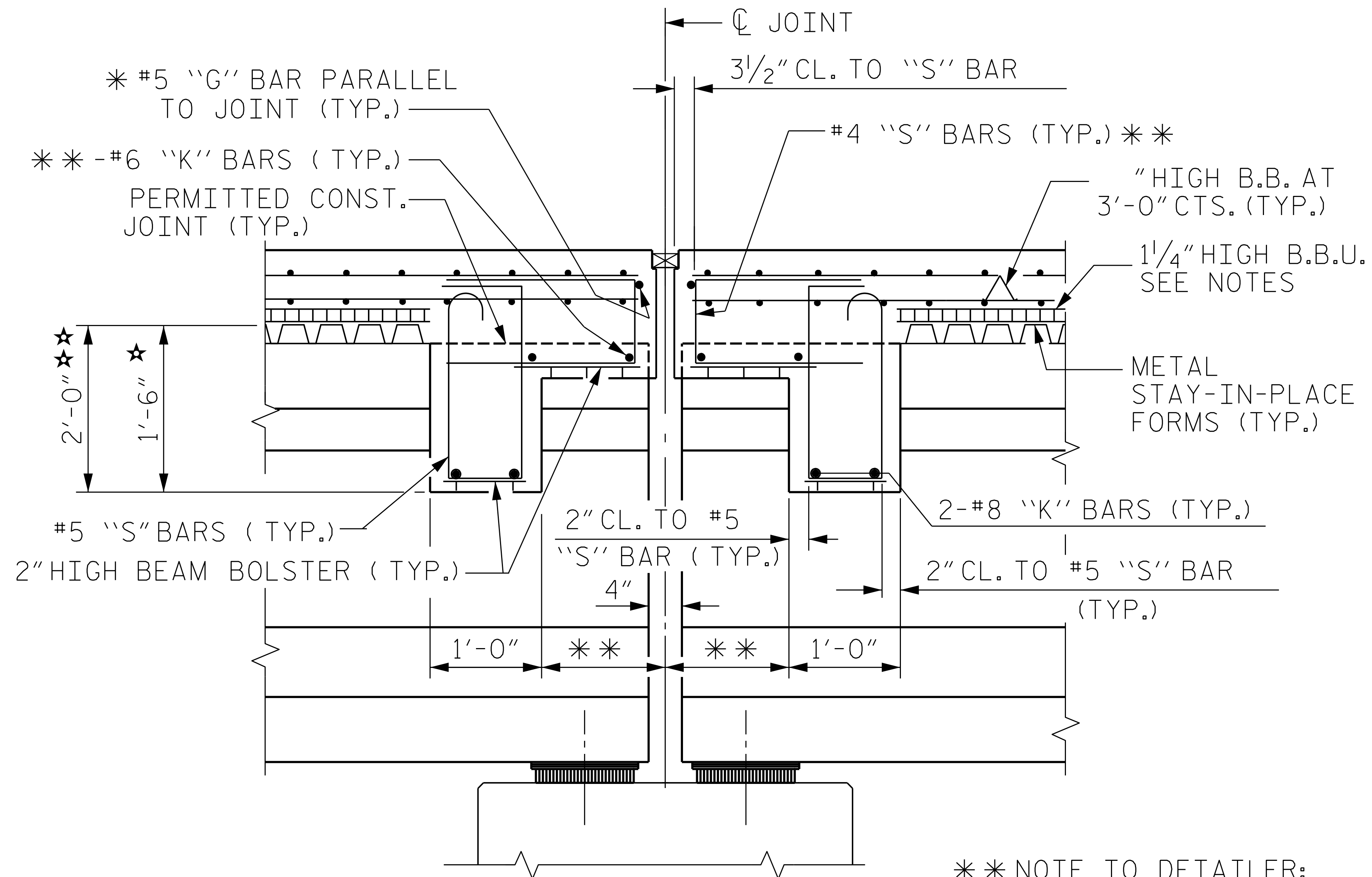


FIGURE 6 - 74



* #5G BAR MAY BE SHIFTED SLIGHTLY, AS NECESSARY, TO CLEAR REINFORCING STEEL AND STIRRUPS.

☆ TYPE II, III

☆☆ TYPE IV, V, VI, 63" MBT, 72" MBT

** NOTE TO DETAILER:

THIS DETAIL SHOWS ADDITIONAL REINFORCEMENT REQUIRED FOR DIAPHRAGM OFFSET BETWEEN 7" AND 11". SEE SECTION 6.3.3 "DIAPHRAGMS" FOR ADDITIONAL REINFORCEMENT REQUIREMENTS FOR OTHER DIAPHRAGM OFFSET DIMENSIONS.

SECTION THROUGH BENT DIAPHRAGM

(PRESTRESSED CONCRETE GIRDER SUPERSTRUCTURE)