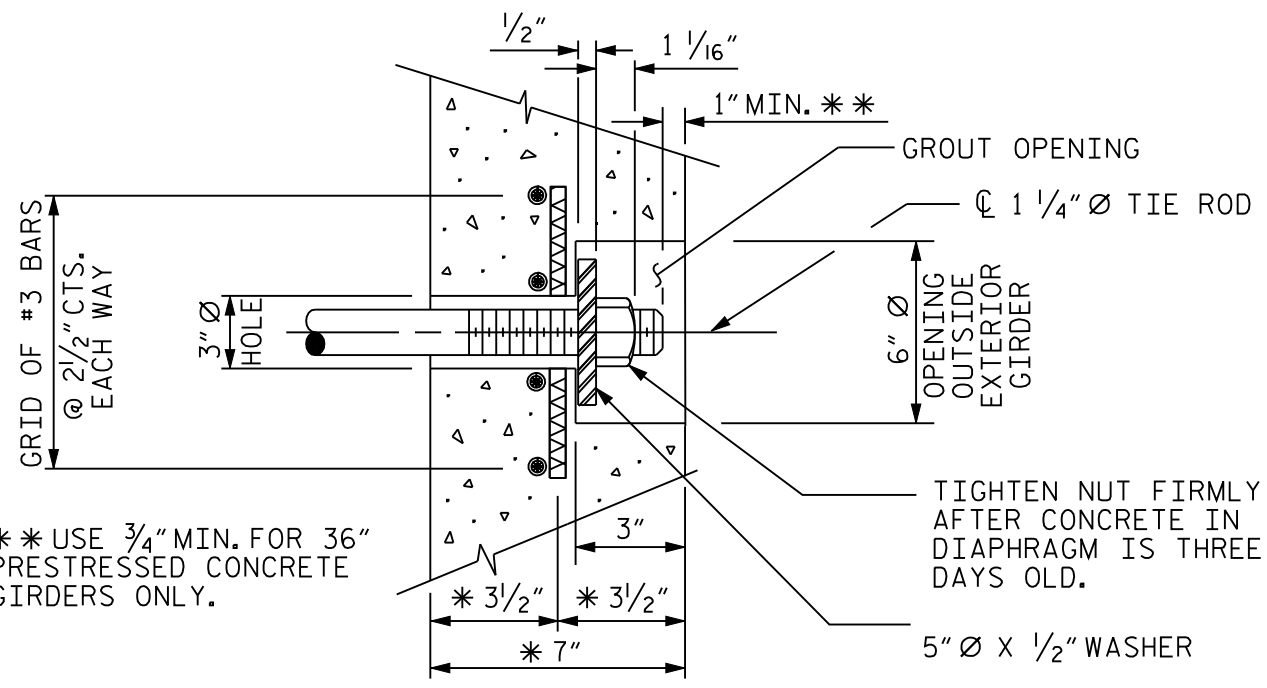


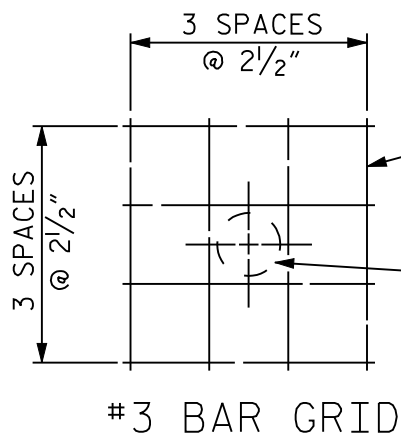
PART - SECTION AT INTERMEDIATE DIAPHRAGM



** USE 3/4" MIN. FOR 36" PRESTRESSED CONCRETE GIRDERS ONLY.

TIGHTEN NUT FIRMLY AFTER CONCRETE IN DIAPHRAGM IS THREE DAYS OLD.

DETAIL "A"



TACK WELDS, IF USED, SHALL NOT REDUCE THE AREA OF THE #3 BARS

3" Ø HOLE

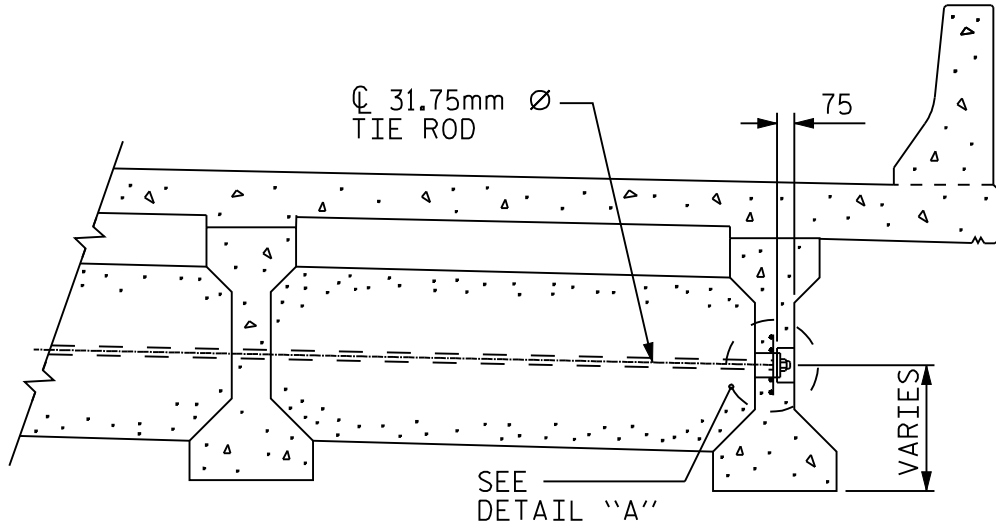
WEIGHT OF #3 BARS ARE NOT INCLUDED IN THE BILL OF MATERIAL.

* TYPE III PRESTRESSED CONCRETE GIRDER DIMENSIONS ARE SHOWN, OTHER SIZES VARY.

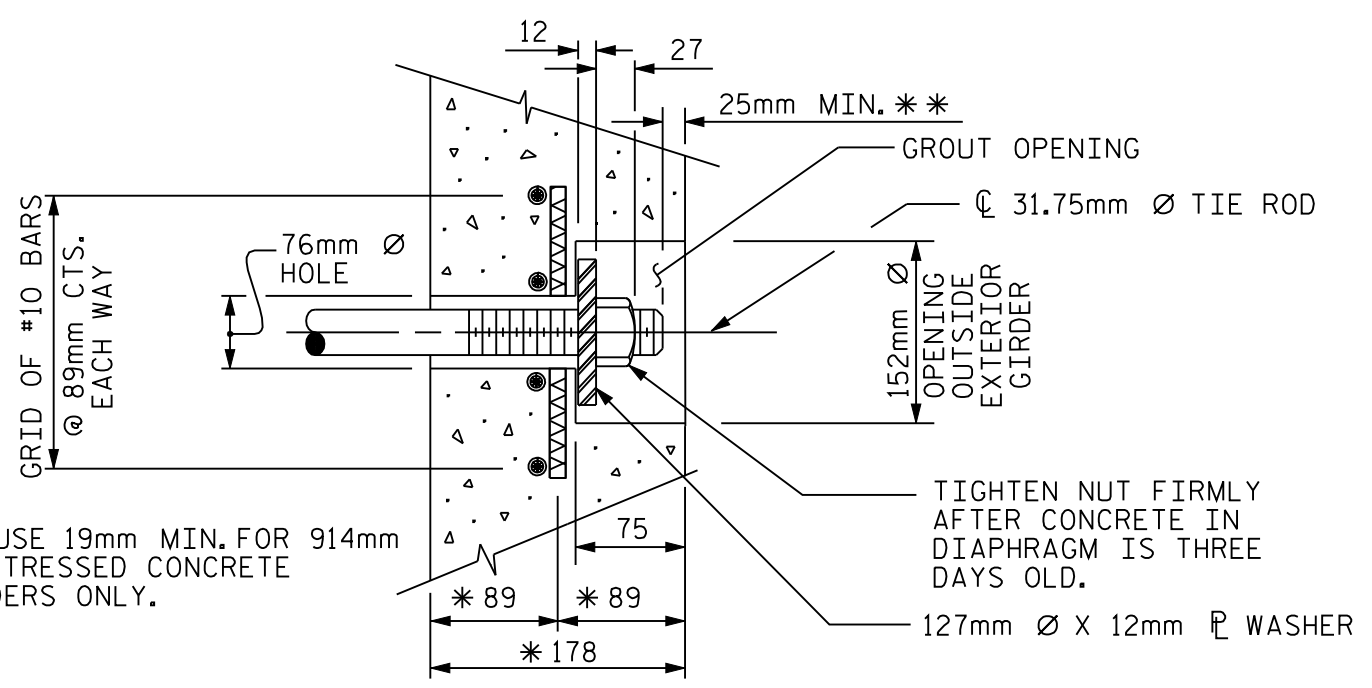
GROUTED RECESS FOR END OF TIE ROD

(DETAIL "A" TO BE PLACED ON STD. PCG1, PCG2, PCG3, OR PCG7)
(FOR BRIDGES LOCATED AT A CORROSIVE SITE)

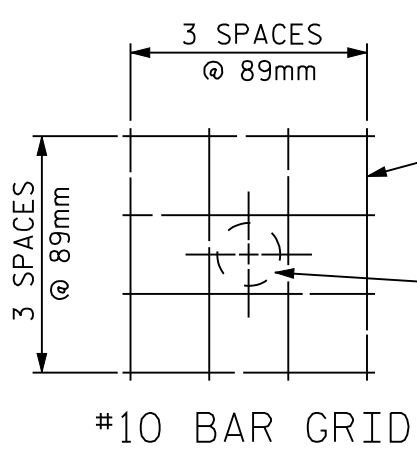
FIGURE 6 - 80



PART - SECTION AT INTERMEDIATE DIAPHRAGM



DETAIL "A"



TACK WELDS, IF USED, SHALL NOT REDUCE THE AREA OF THE #10 BARS

76mm Ø HOLE

WEIGHT OF #10 BARS ARE NOT INCLUDED IN THE BILL OF MATERIAL.

* TYPE III PRESTRESSED CONCRETE GIRDER DIMENSIONS ARE SHOWN, OTHER SIZES VARY.

GROUTED RECESS FOR END OF TIE ROD

(DETAIL "A" TO BE PLACED ON STD. PCG1SM, PCG2SM, PCG3SM, OR PCG7SM)
(FOR BRIDGES LOCATED AT A CORROSIVE SITE)

FIGURE 6 - 80 M