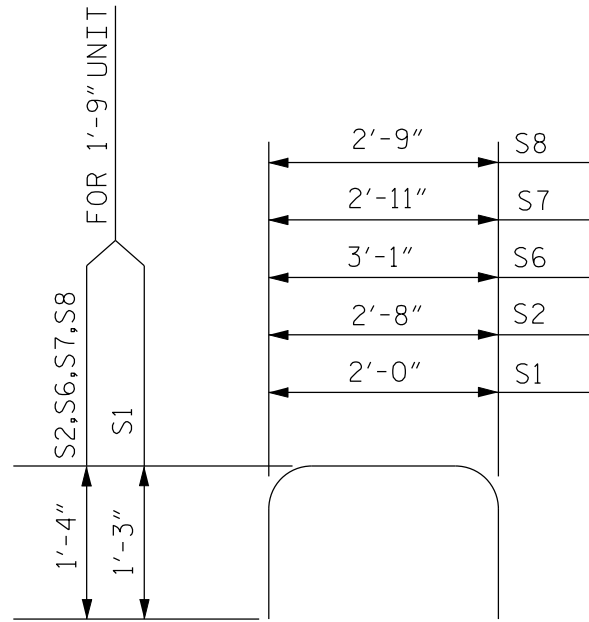


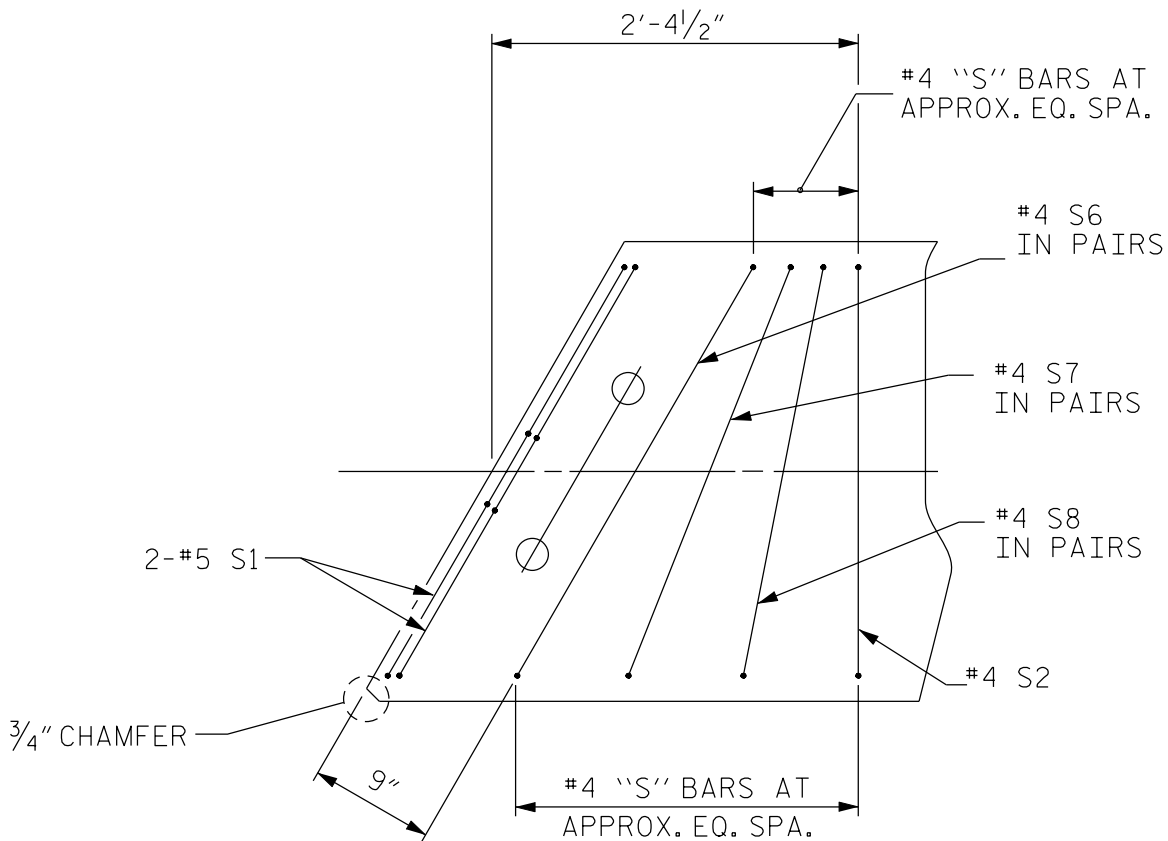
NOTE TO DETAILER:

THE NUMBER AND LENGTH OF EXTRA STIRRUPS BETWEEN THE S1 AND S2 STIRRUPS SHOULD BE DETERMINED FOR EACH PROJECT. THE MAXIMUM SPACING BETWEEN STIRRUPS SHOULD NOT EXCEED 1'-0".



BAR TYPE

(AASHTO TYPE IV-36)



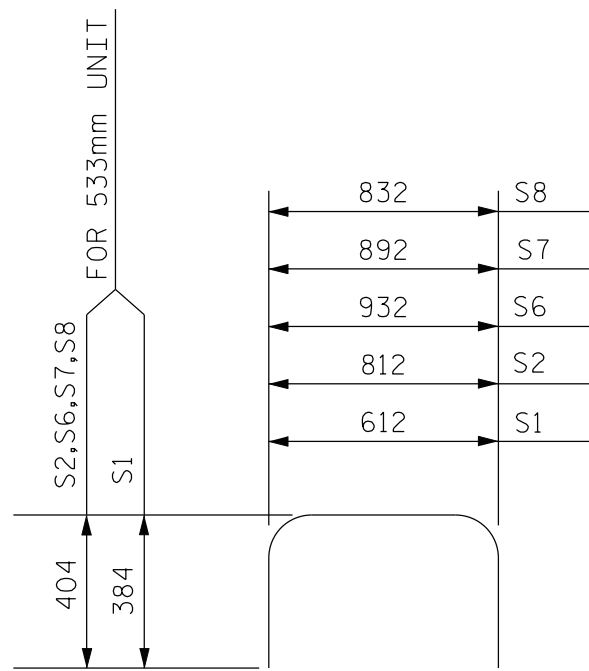
PART PLAN END OF CORED SLAB UNIT

(AASHTO TYPE IV-36, 120° SKEW SHOWN)  
SHOWING REINFORCING STEEL AND SPACING FOR END OF SLAB.

**FIGURE 6 - 85**

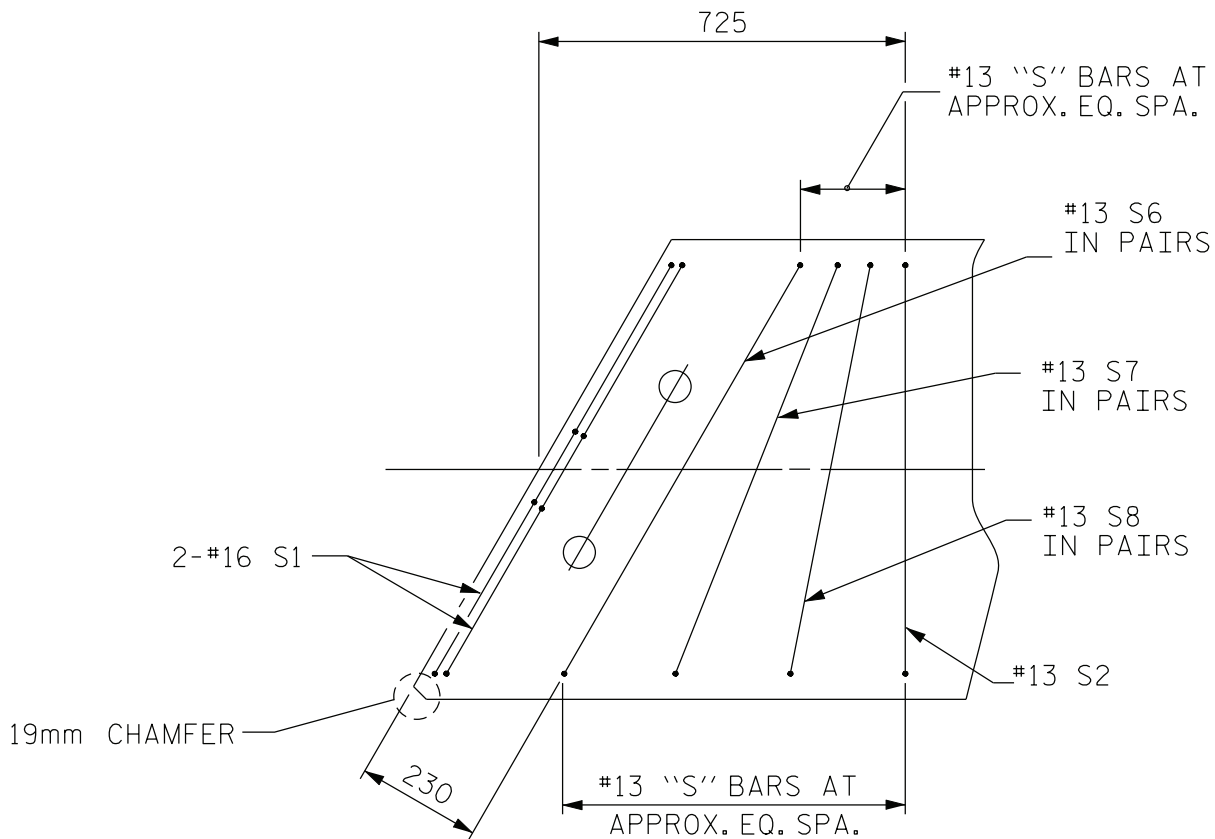
NOTE TO DETAILER:

THE NUMBER AND LENGTH OF EXTRA STIRRUPS BETWEEN THE S1 AND S2 STIRRUPS SHOULD BE DETERMINED FOR EACH PROJECT. THE MAXIMUM SPACING BETWEEN STIRRUPS SHOULD NOT EXCEED 300mm.



BAR TYPE

(AASHTO TYPE IV-914)



PART PLAN END OF CORED SLAB UNIT

(AASHTO TYPE IV-914, 120° SKEW SHOWN)  
SHOWING REINFORCING STEEL AND SPACING FOR END OF SLAB.

**FIGURE 6 - 85 M**