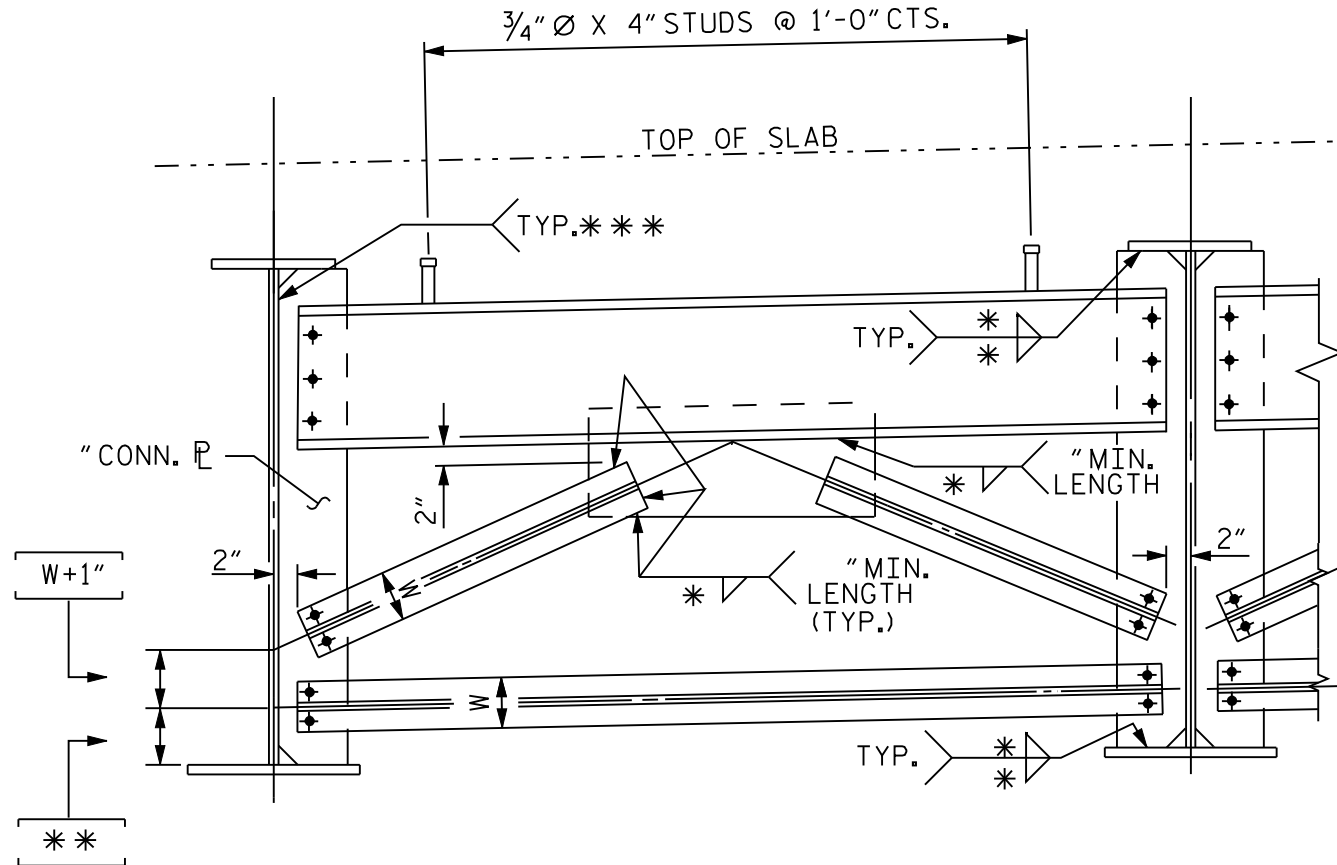


FIGURE 6 - 99



* = SHOW WELD SIZE.

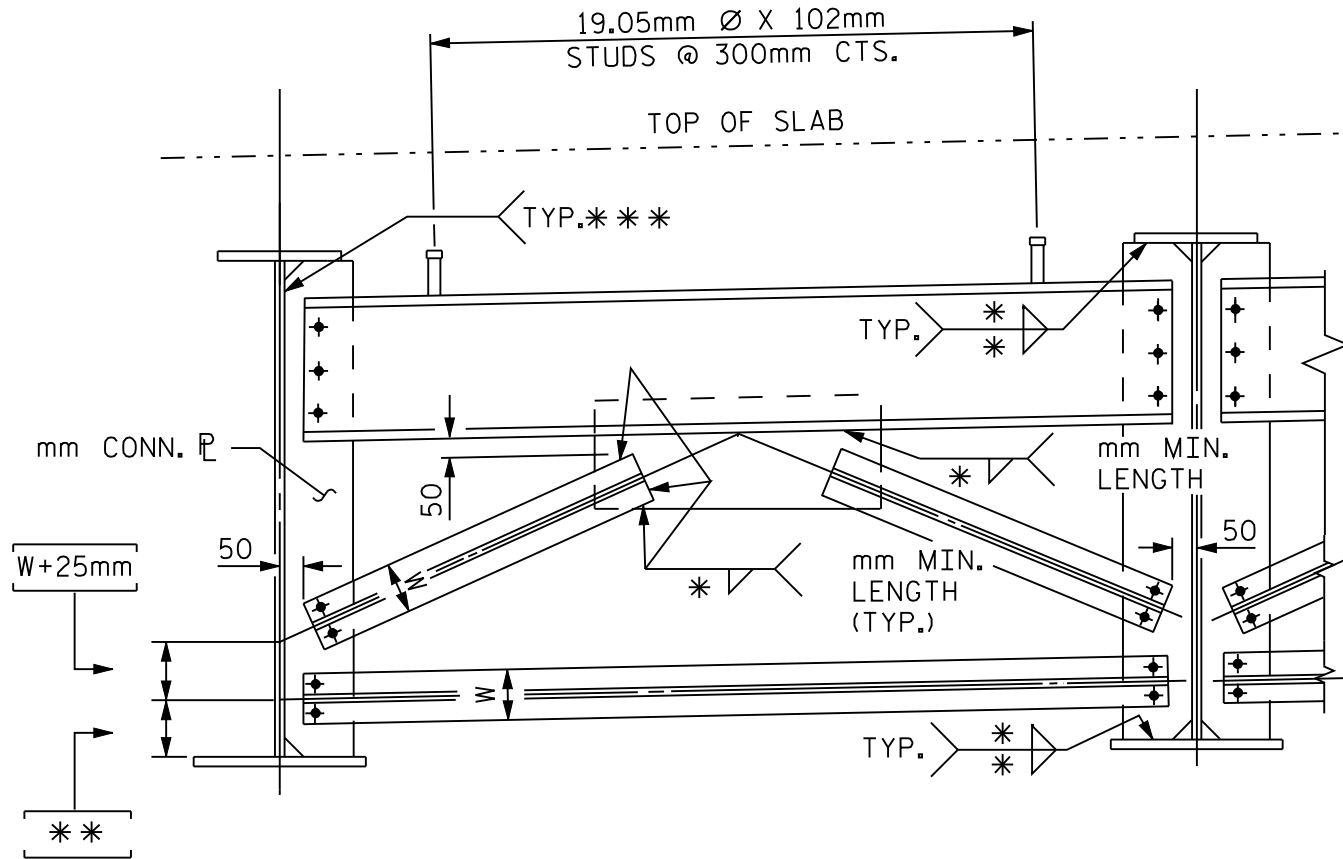
** = CLIP SIZE + 1/2W (MIN.) ROUND TO NEXT ONE-HALF INCH.
FOR CLIP SIZE, SEE FIGURE 6-101.

*** = SEE FIGURE 6-114 FOR WELD DETAILS.
SEE FIGURE 6-113 FOR WELD TERMINATION DETAILS.

TYPICAL BENT CROSSFRAME FOR
PLATE GIRDERS MORE THAN 48" DEEP

WITHOUT LATERAL BRACING

FIGURE 6 - 99 M



* = SHOW WELD SIZE.

** = CLIP SIZE + 1/2W (MIN.) ROUND TO NEXT 10mm.
FOR CLIP SIZE, SEE FIGURE 6-101.

*** = SEE FIGURE 6-114 FOR WELD DETAILS.
SEE FIGURE 6-113 FOR WELD TERMINATION DETAILS.

TYPICAL BENT CROSSFRAME FOR
PLATE GIRDERS MORE THAN 1220mm DEEP

WITHOUT LATERAL BRACING