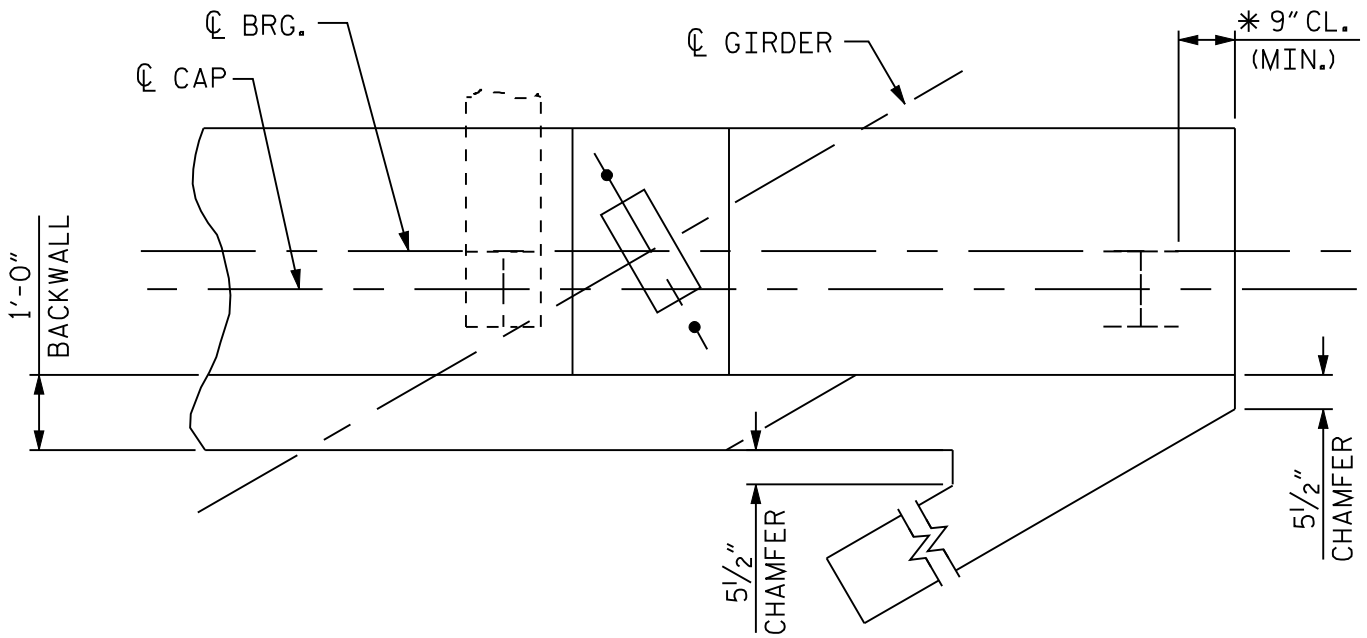


MODERATE SKEW

($45^\circ \leq \text{SKEW} \leq 60^\circ$ OR $120^\circ \leq \text{SKEW} \leq 135^\circ$)



HEAVY SKEW

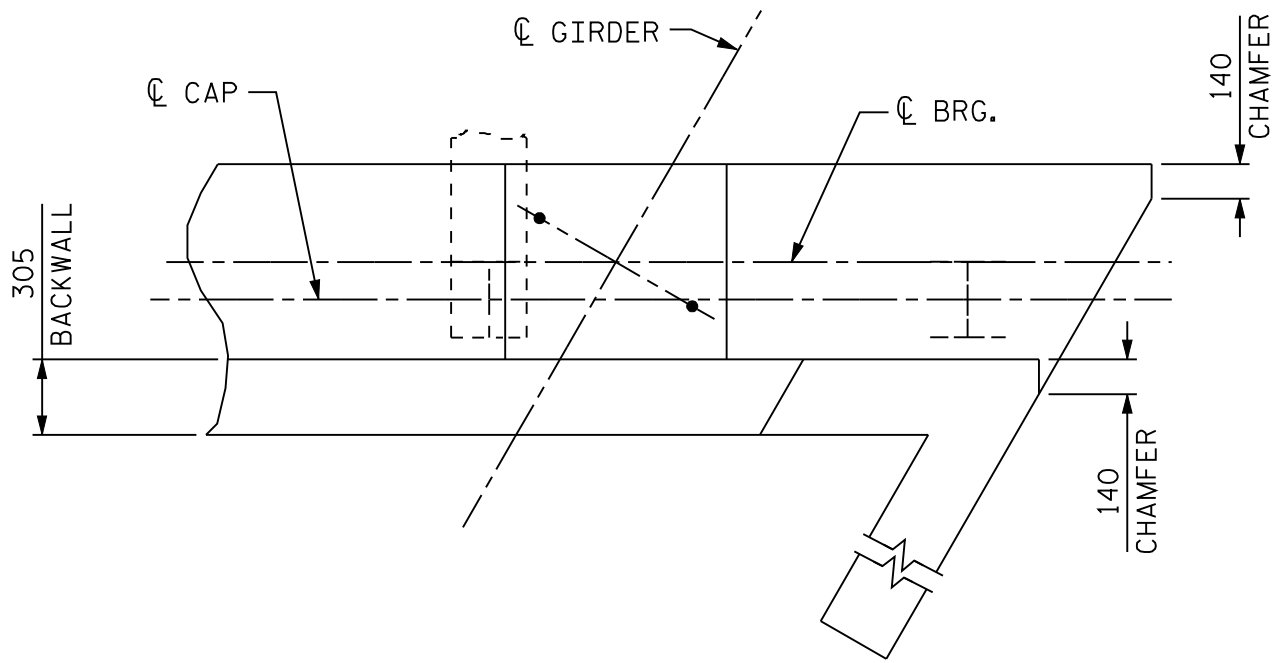
($\text{SKEW} < 45^\circ$ OR $\text{SKEW} > 135^\circ$)

NOTE TO DESIGNER:

* WHEN CLIPPING OR CHAMFERING THE CORNER, MAKE SURE MINIMUM PILE CLEARANCE IS MAINTAINED

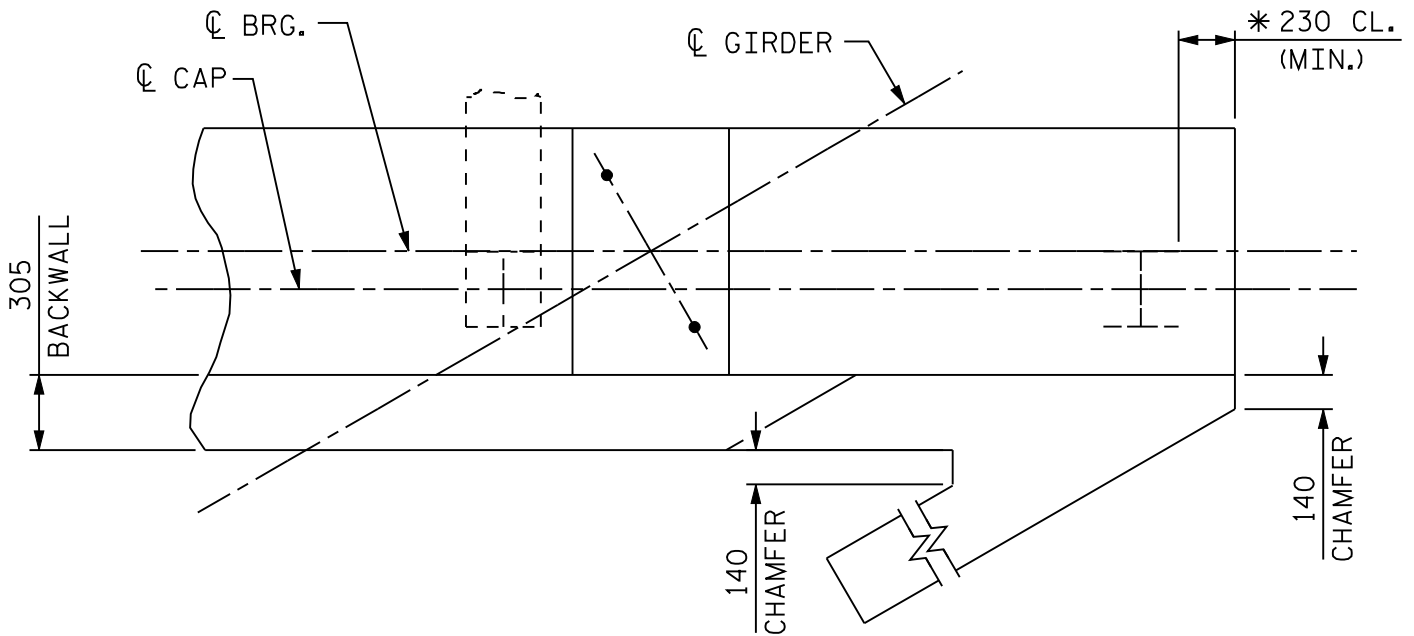
CHAMFERING ACUTE END BENT CORNER

FIGURE 7 - 10



MODERATE SKEW

($45^\circ \leq \text{SKEW} \leq 60^\circ$ OR $120^\circ \leq \text{SKEW} \leq 135^\circ$)



HEAVY SKEW

($\text{SKEW} < 45^\circ$ OR $\text{SKEW} > 135^\circ$)

NOTE TO DESIGNER:

* WHEN CLIPPING OR CHAMFERING THE CORNER, MAKE SURE MINIMUM PILE CLEARANCE IS MAINTAINED

CHAMFERING ACUTE END BENT CORNER

FIGURE 7 - 10 M