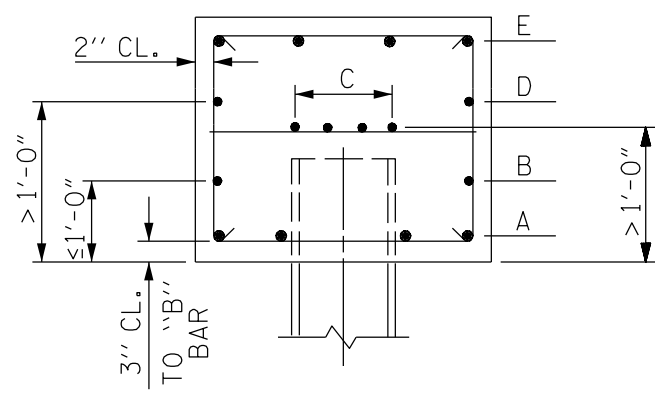


ELEVATION OF END BENT

* PER AASHTO:
 NONCONTACT LAP SPLICE
 BAR SPACING $\leq 1/5$ REQ.
 LAP SPLICE LENGTH $\leq 6''$



SECTION X-X

SPLICES FOR END BENTS

- A = TENSION, CLASS B, OTHER BAR
- B = TENSION, CLASS B, OTHER BAR
- C = TENSION, CLASS B, TOP BAR
- D = TENSION, CLASS B, TOP BAR
- E = TENSION, CLASS B, TOP BAR

NOTE TO DETAILER

THE SPLICE LENGTHS ON FIGURE 10-4 MAY BE USED IF THE MINIMUM CLEARANCE AND SPACING REQUIREMENTS ARE SATISFIED. OTHERWISE, THE SPLICE LENGTHS ON FIGURE 10-4 SHOULD BE MODIFIED. SEE SECTION 10.4.3 OF DESIGN MANUAL FOR MINIMUM REQUIREMENTS AND MODIFICATIONS.

EXAMPLE

ASSUME A #10 BAR IN THE TOP OF THE CAP. SPLICE "E" IS A TENSION, CLASS B, TOP BAR. ACCORDING TO FIGURE 10-4, THE APPROPRIATE CLASS B TENSION SPLICE LENGTH FOR A #10 UNCOATED TOP BAR IS 6'-0".

GENERAL GUIDE TO
 SUBSTRUCTURE BAR SPLICE LENGTHS

END BENT

FIGURE 10 - 8