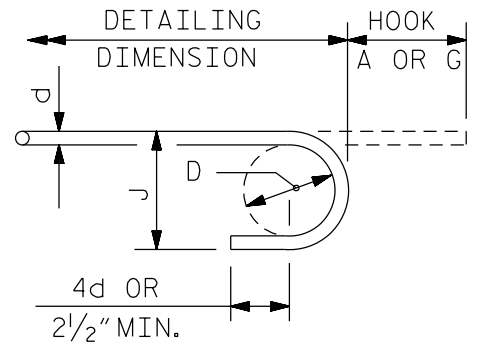
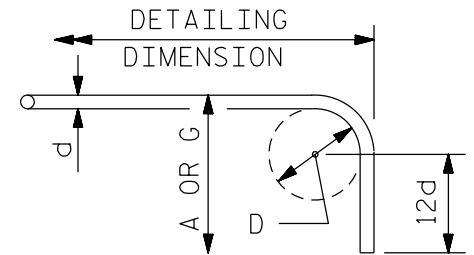


D = BEND DIAMETER

BAR SIZE	WT. (lbs./ft.)	APPROX. DIAMETER OUTSIDE DEFORMATION (inches)	NOMINAL DIA. (inches)	180° END HOOKS		90° END HOOKS
				HOOK A OR G	J	HOOK A OR G
#3	0.376	7/16"	0.375	5"	3"	6"
#4	0.668	9/16"	0.500	6"	4"	8"
#5	1.043	1 1/16"	0.625	7"	5"	10"
#6	1.502	7/8"	0.750	8"	6"	1'-0"
#7	2.044	1"	0.875	10"	7"	1'-2"
#8	2.670	1 1/8"	1.000	11"	8"	1'-4"
#9	3.400	1 1/4"	1.128	1'-3"	11 3/4"	1'-7"
#10	4.303	1 7/16"	1.270	1'-5"	1'-1 1/4"	1'-10"
#11	5.313	1 5/8"	1.410	1'-7"	1'-2 3/4"	2'-0"
#14	7.650	1 7/8"	1.693	2'-3"	1'-9 3/4"	2'-7"
#18	13.600	2 1/2"	2.257	3'-0"	2'-4 1/2"	3'-5"



180°



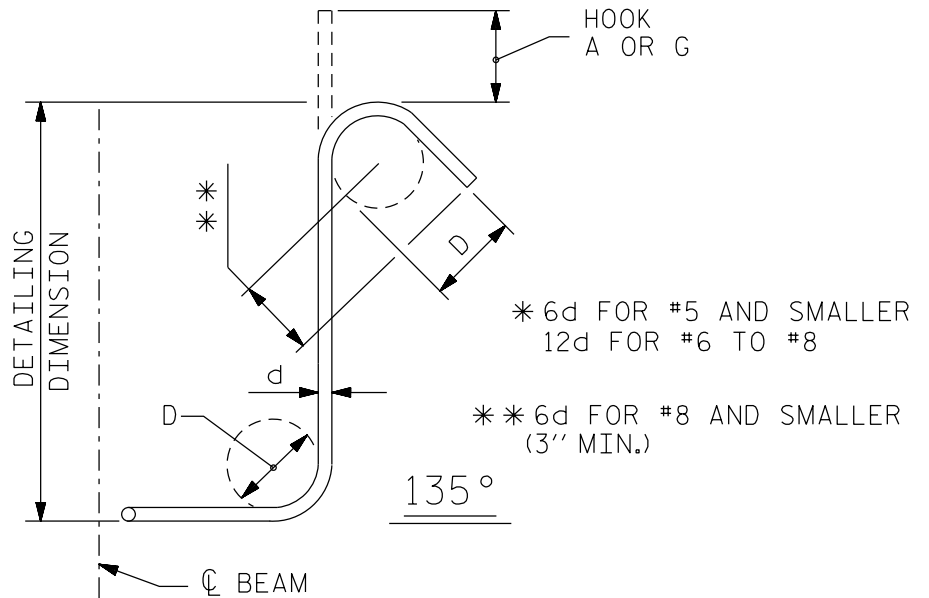
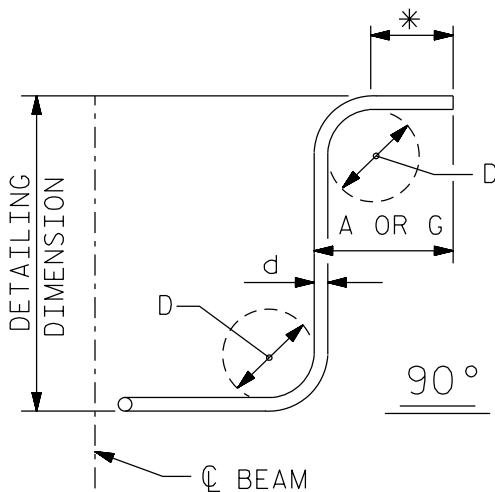
90°

MIN. D = 6d FOR #3 THRU #8
 MIN. D = 8d FOR #9 THRU #11
 MIN. D = 10d FOR #14 AND #18

STIRRUP OR TIE

BAR SIZE	D (IN.)	90°		135°	
		HOOK A OR G	HOOK A OR G	HOOK A OR G	HOOK A OR G
#3	1 1/2"	4"	4"	4"	4"
#4	2"	4 1/2"	4 1/2"	4 1/2"	4 1/2"
#5	2 1/2"	6"	5 1/2"	5 1/2"	5 1/2"

D = 4d FOR #5 AND SMALLER
 D = 6d FOR #6 TO #8



STIRRUP HOOKS
 (TIE BENDS SIMILAR)

STANDARD BAR DETAILS

ASTM A615-18e1, GRADE 60

FIGURE 10 - 11