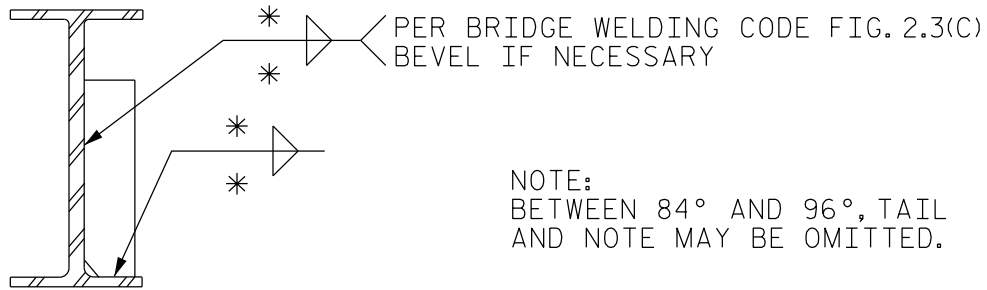
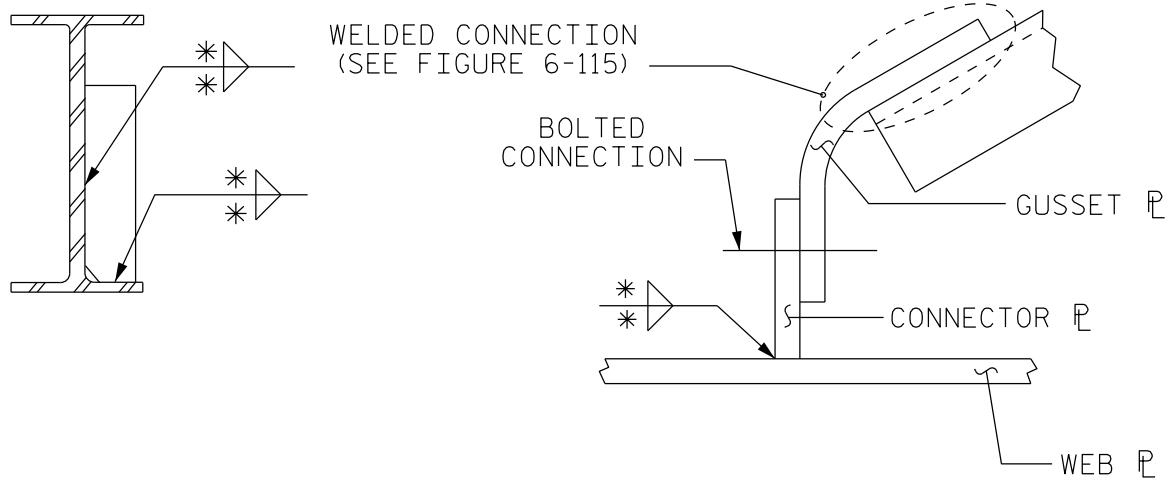


STATIONING

SELECT WELD ACCORDING TO SKEW CONDITION. NOTE THAT IT IS UNNECESSARY TO DRAW THE DETAIL EXCEPT FOR VERY SHARP SKEWS. SEE FIGURE 6-113 FOR WELD TERMINATION DETAILS.



DETAIL "A" - OVER 70° & LESS THAN 110°



DETAIL "B" - UNDER 70° & OVER 110°

* = SHOW WELD SIZE

WEB STIFFENER OR CONNECTOR PLATE WELD DETAIL

FIGURE 6 - 114