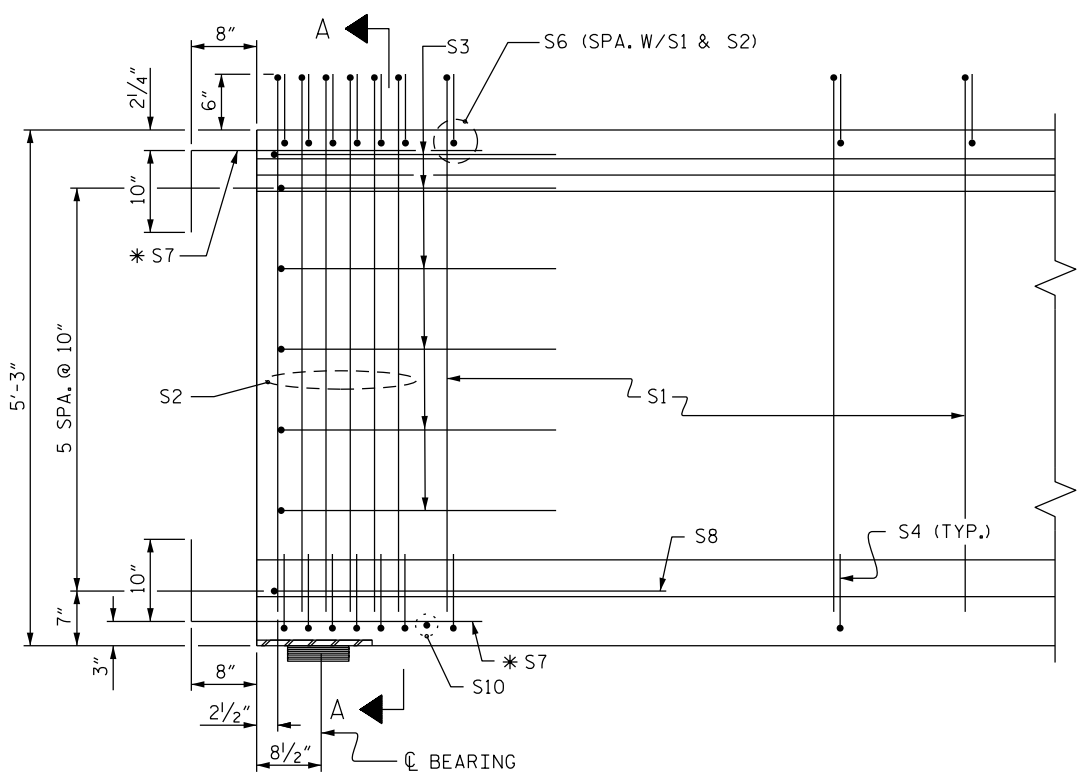
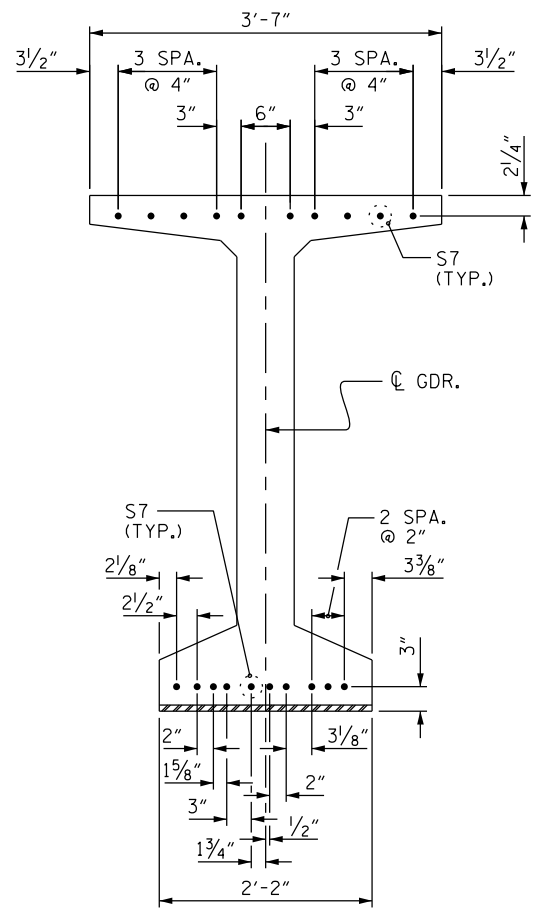


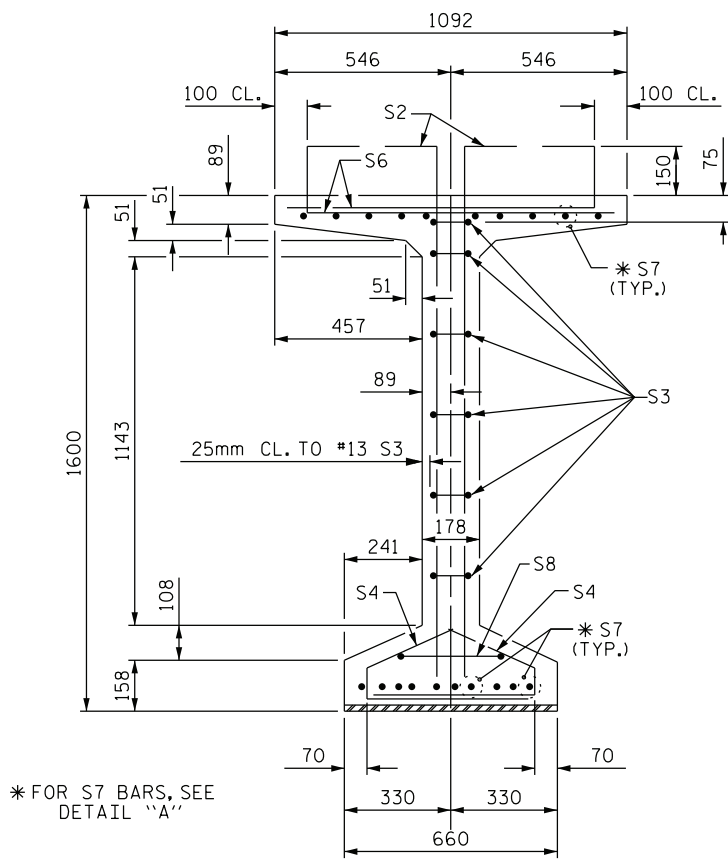
* FOR S7 BARS, SEE
DETAIL "A"



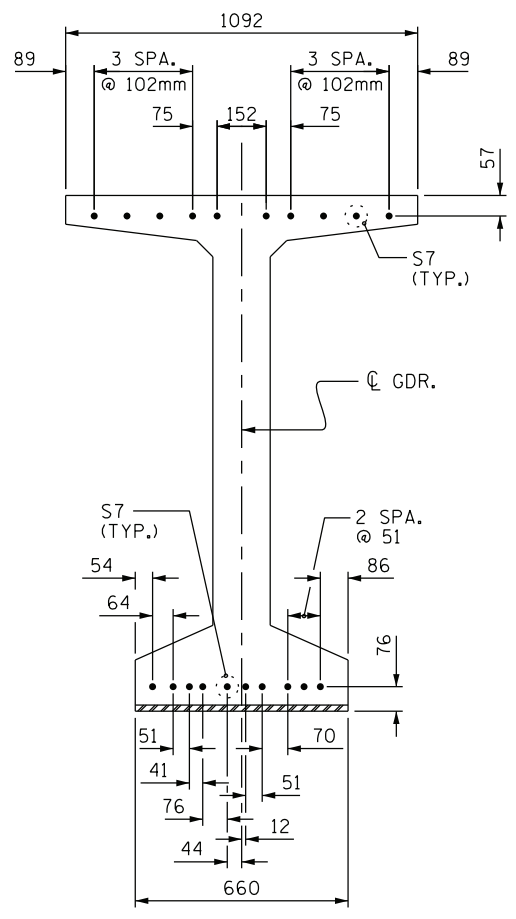
INTEGRAL END BENT DETAILS

PCG SUPERSTRUCTURE

FIGURE 6 - 123

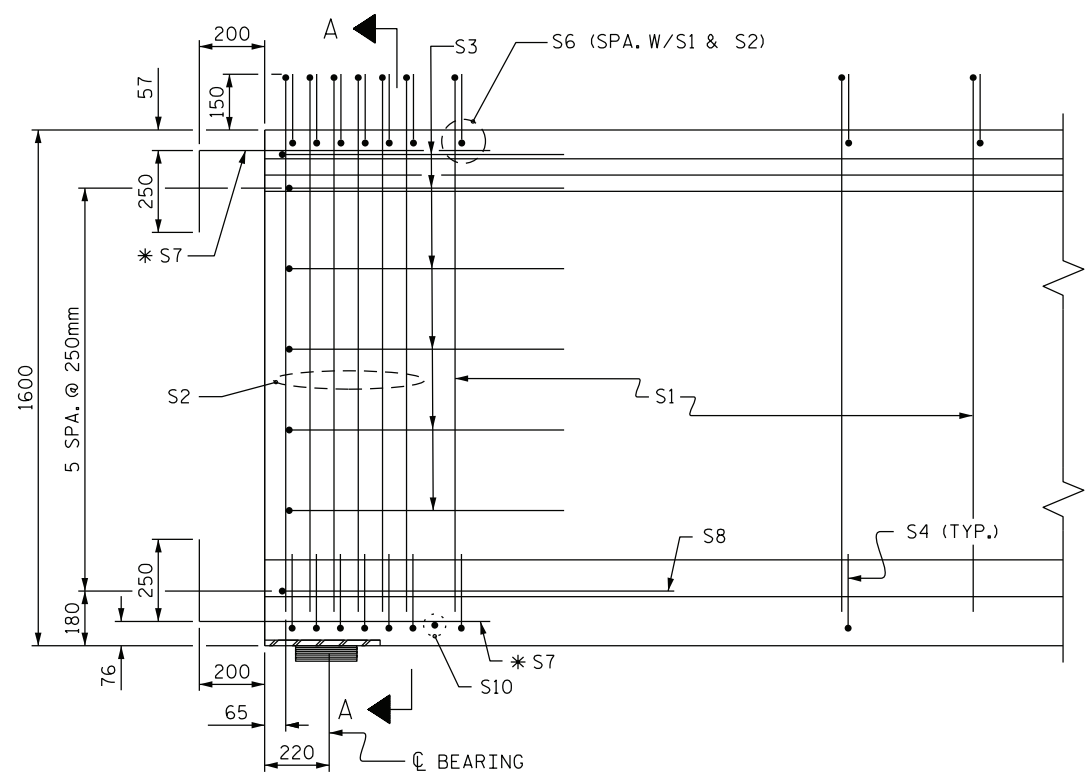


SECTION A-A



DETAIL "A"

* FOR S7 BARS, SEE DETAIL "A"



PARTIAL ELEVATION OF GIRDER

INTEGRAL END BENT DETAILS

PCG SUPERSTRUCTURE

FIGURE 6 - 123 M