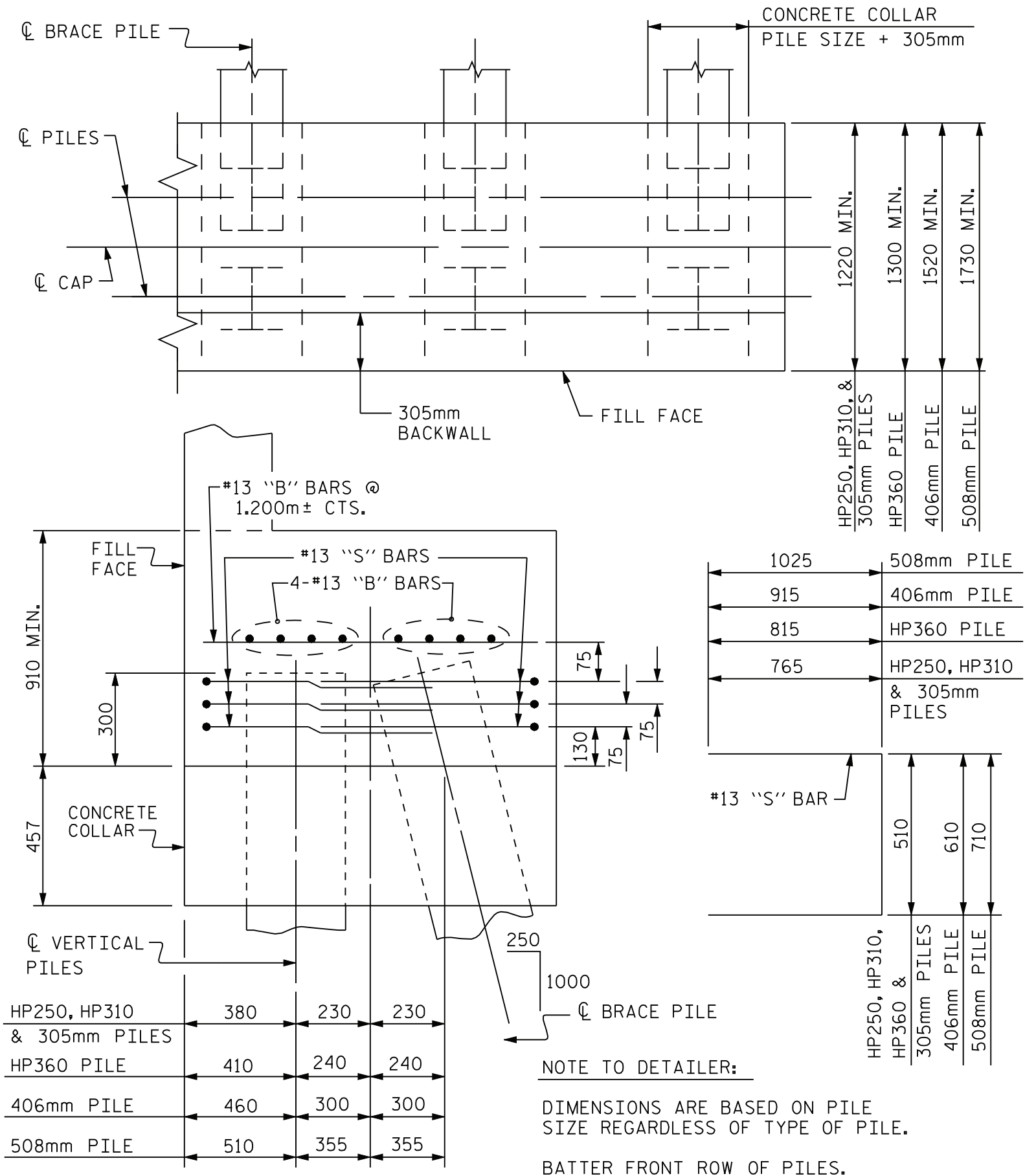


**NOTE TO DETAILER:**  
 DIMENSIONS ARE BASED ON PILE SIZE REGARDLESS OF TYPE OF PILE.  
 BATTER FRONT ROW OF PILES.

### STANDARD BRACE PILE DETAILS

(FOR END BENTS WHEN DOUBLE ROW OF PILES ARE USED)

**FIGURE 7 - 24**



## STANDARD BRACE PILE DETAILS

(FOR END BENTS WHEN DOUBLE ROW OF PILES ARE USED)

**FIGURE 7 - 24 M**