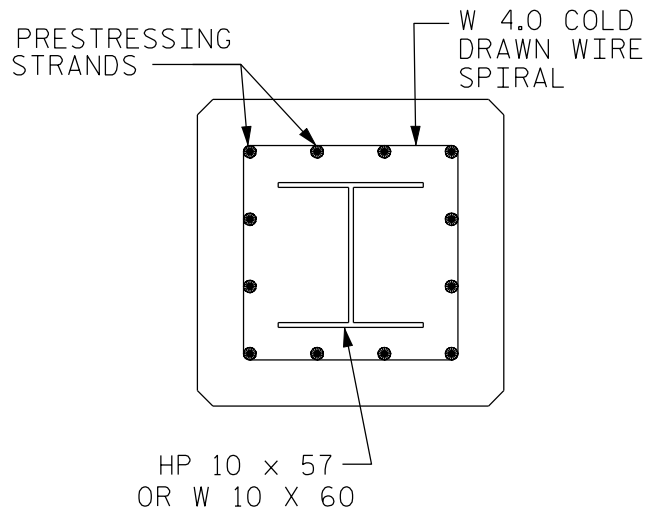
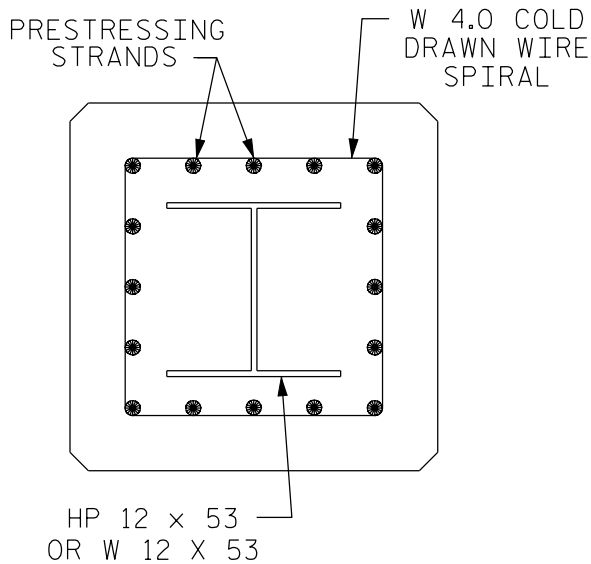


SECTION B-B
FOR 16" SQUARE
PRESTRESSED CONCRETE PILE

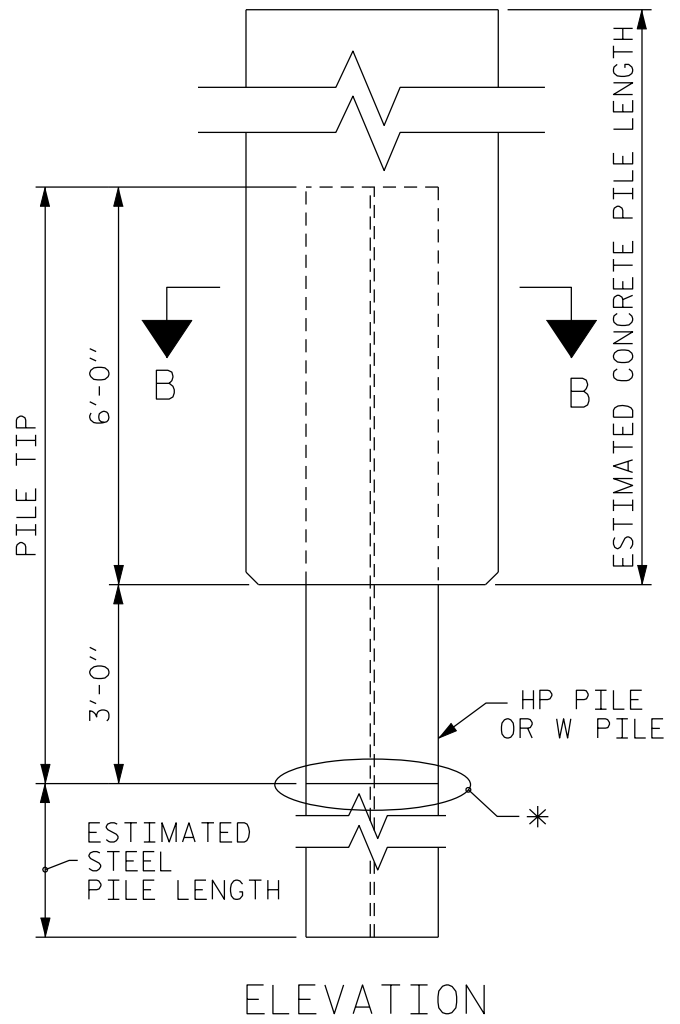


SECTION B-B
FOR 20" SQUARE
PRESTRESSED CONCRETE PILE



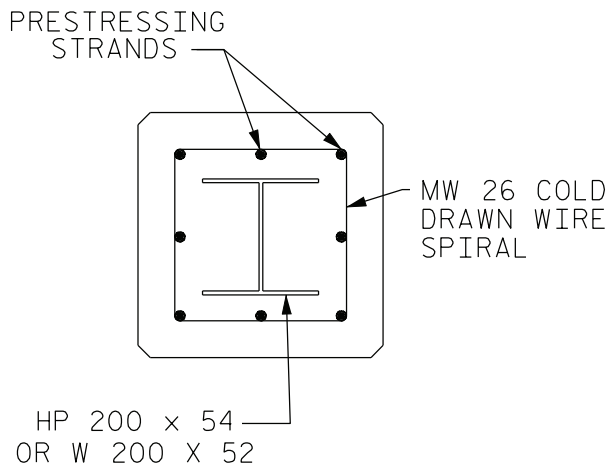
SECTION B-B
FOR 24" SQUARE
PRESTRESSED CONCRETE PILE

* STEEL PILES SHALL BE SPLICED WITH APPROVED PILE SPLICERS.

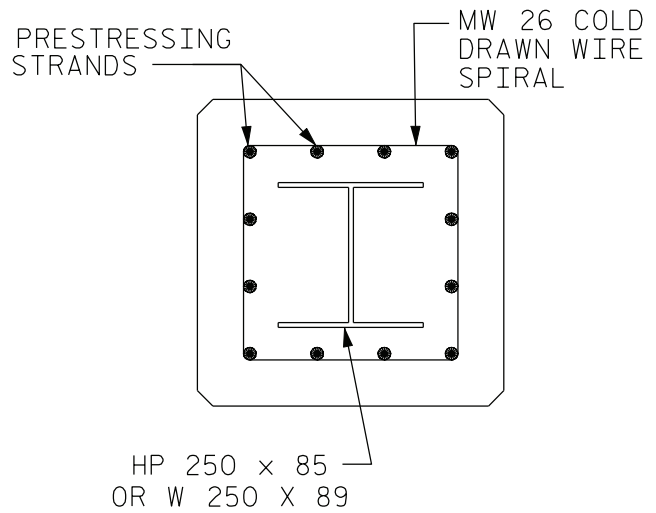


COMPOSITE PILE DETAILS

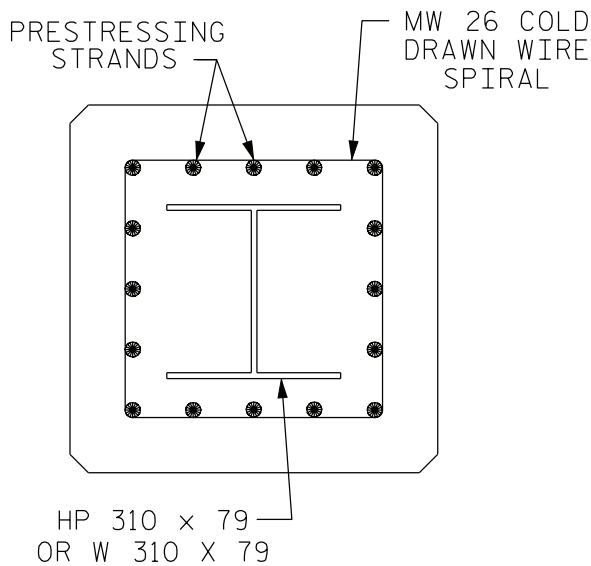
FIGURE 7 - 33



SECTION B-B
FOR 406mm SQUARE
PRESTRESSED CONCRETE PILE

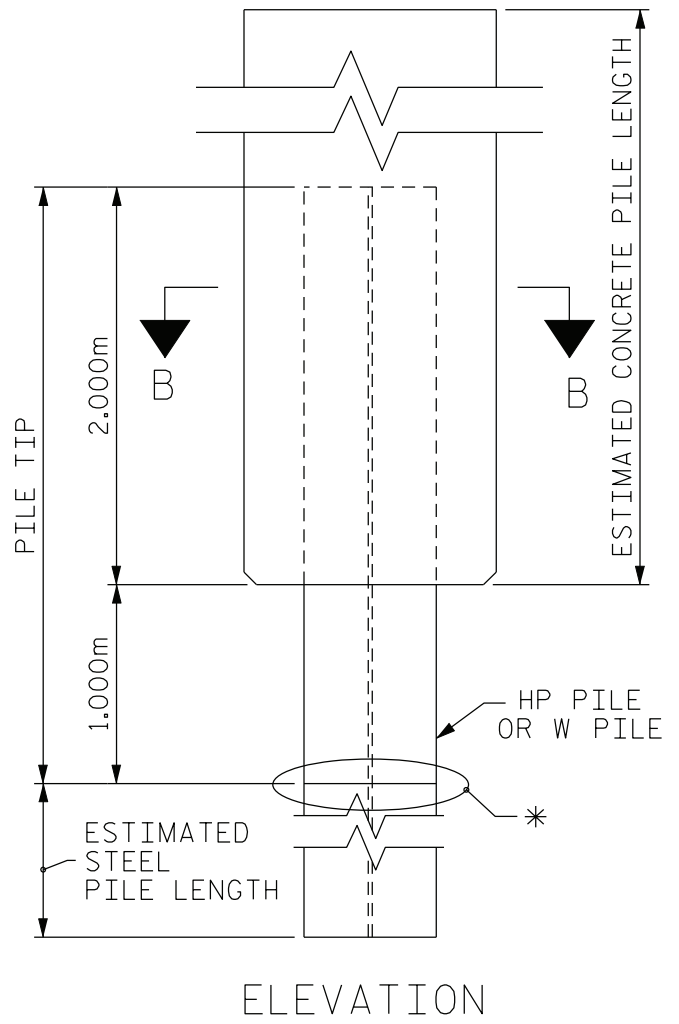


SECTION B-B
FOR 508mm SQUARE
PRESTRESSED CONCRETE PILE



SECTION B-B
FOR 610mm SQUARE
PRESTRESSED CONCRETE PILE

* STEEL PILES SHALL BE SPLICED WITH APPROVED PILE SPLICERS.



COMPOSITE PILE DETAILS

FIGURE 7 - 33 M