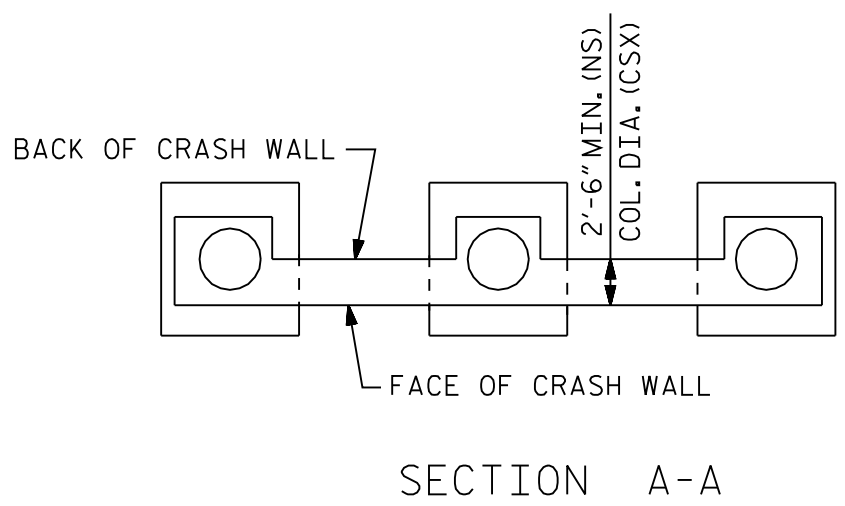
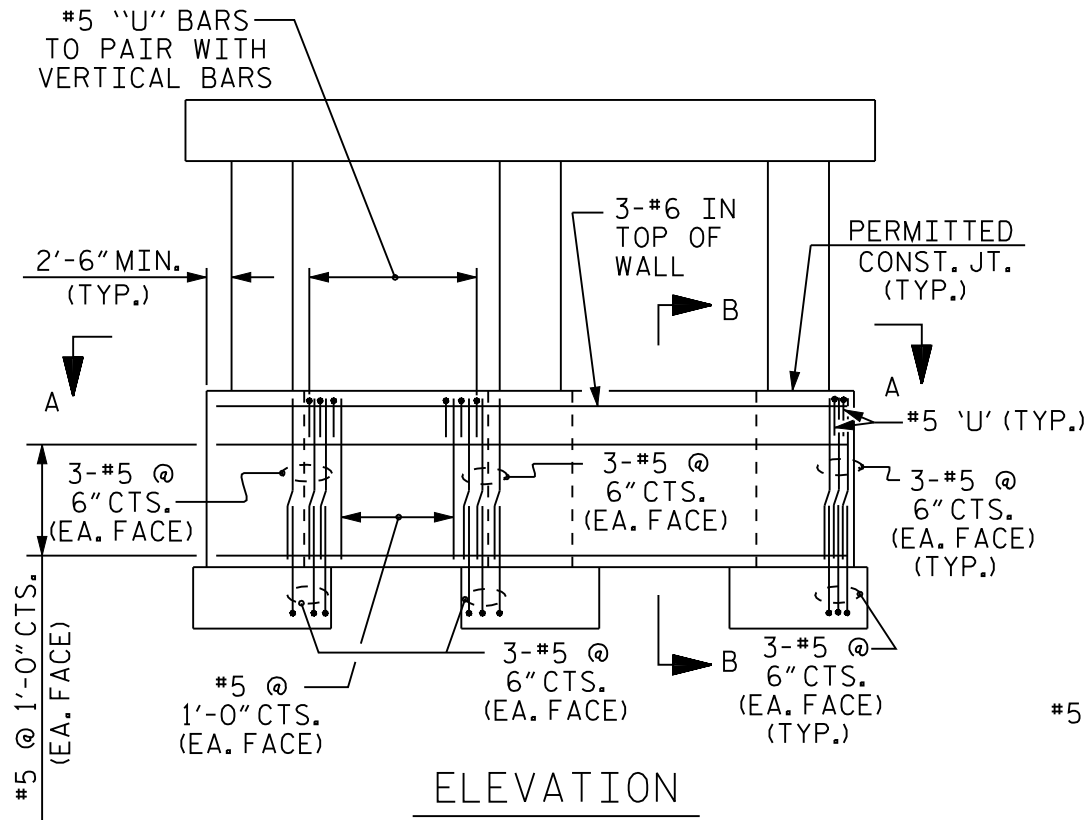
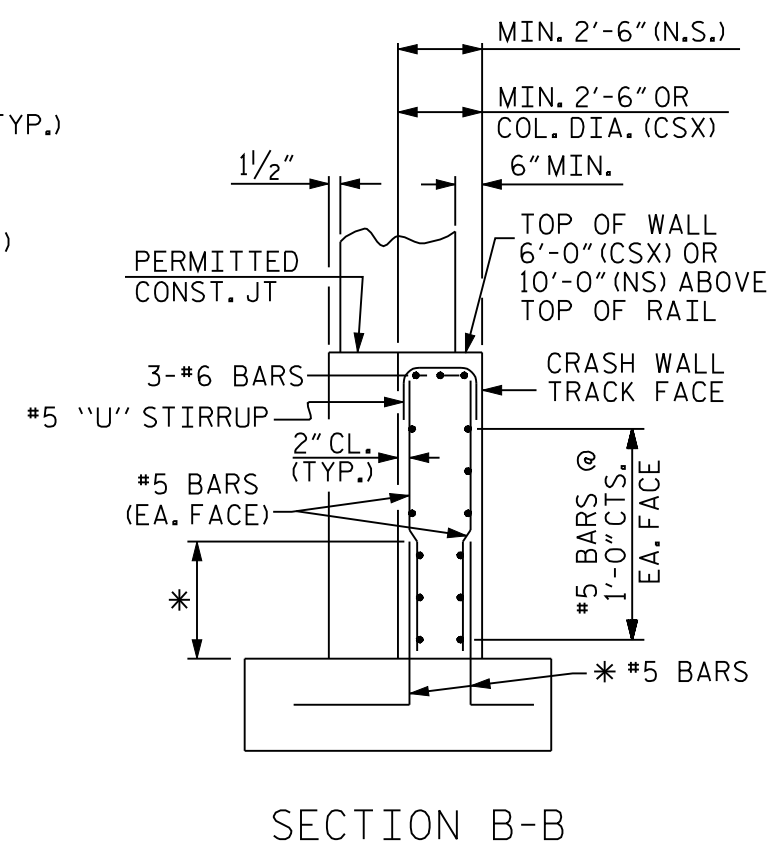


FIGURE 7 - 40



NOTE TO DETAILER:

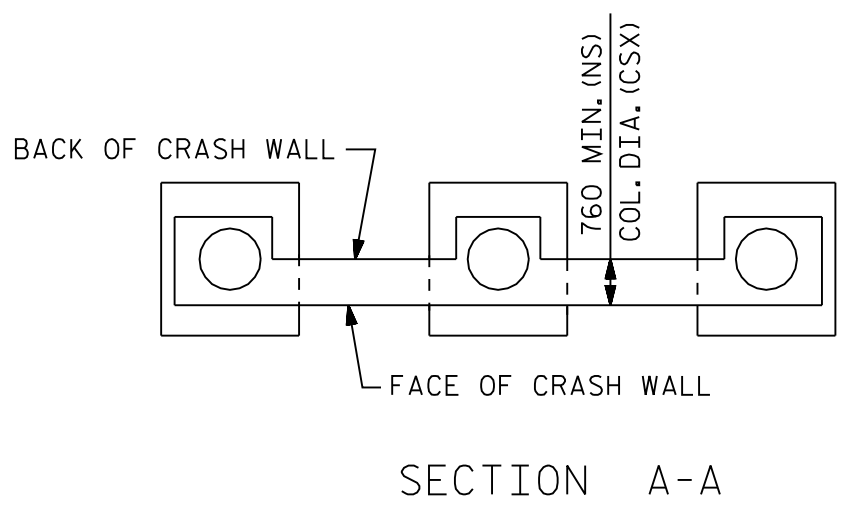
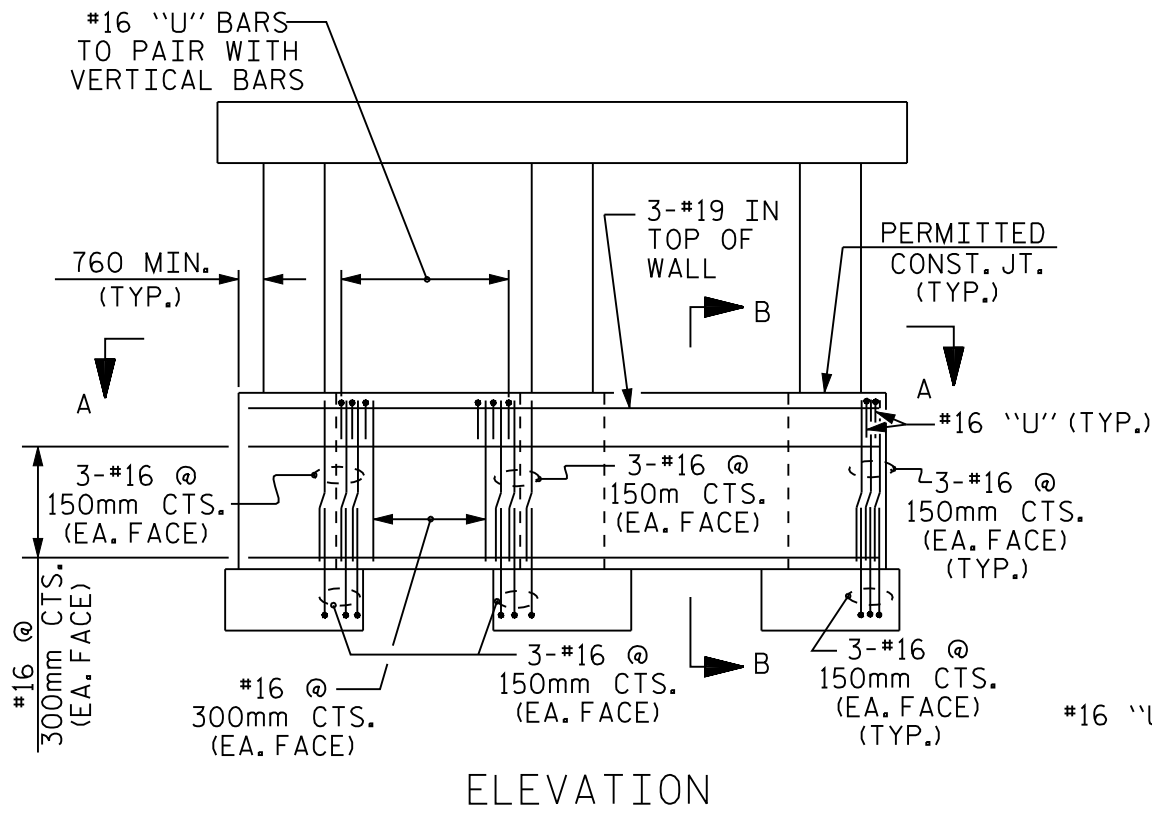
* ADD 3'-0" TO SPLICE LENGTH IF SPREAD FOOTINGS ARE USED TO TAKE CARE OF POSSIBLE ADJUSTMENTS TO FOOTING ELEVATION.



NS - NORFOLK SOUTHERN
CSX - CSX

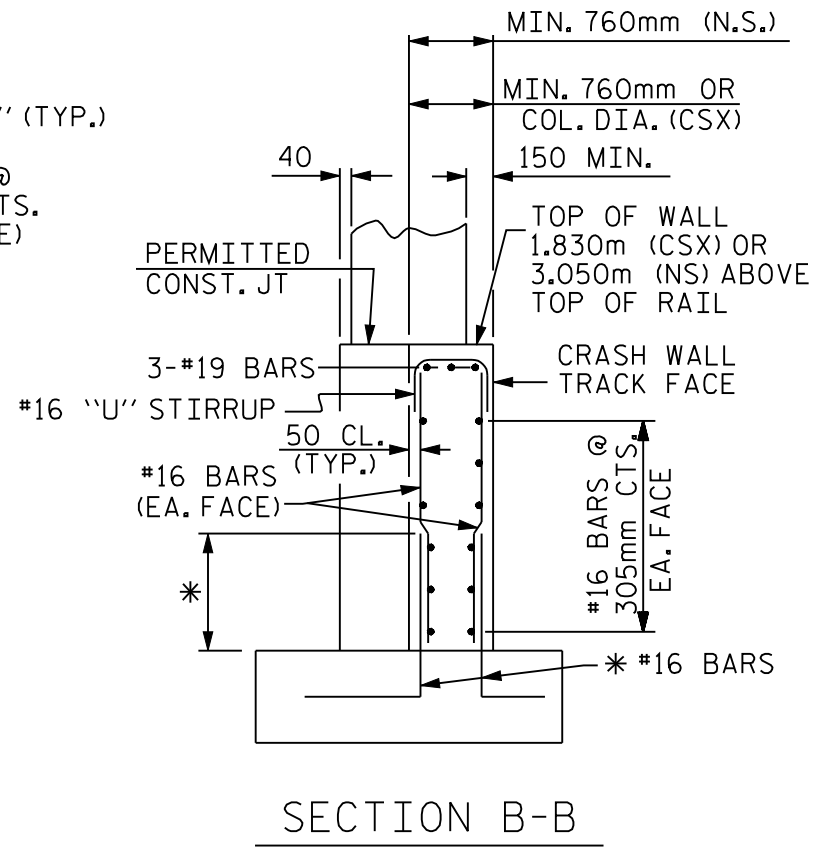
PIER CRASH WALL FOR RAILROAD OVERHEADS
(FOR MULTI-COLUMN BENTS)

FIGURE 7 - 40 M



NOTE TO DETAILER:

* ADD 920mm TO SPLICE LENGTH IF SPREAD FOOTINGS ARE USED TO TAKE CARE OF POSSIBLE ADJUSTMENTS TO FOOTING ELEVATION.



NS - NORFOLK SOUTHERN
CSX - CSX

PIER CRASH WALL FOR RAILROAD OVERHEADS
(FOR MULTI-COLUMN BENTS)