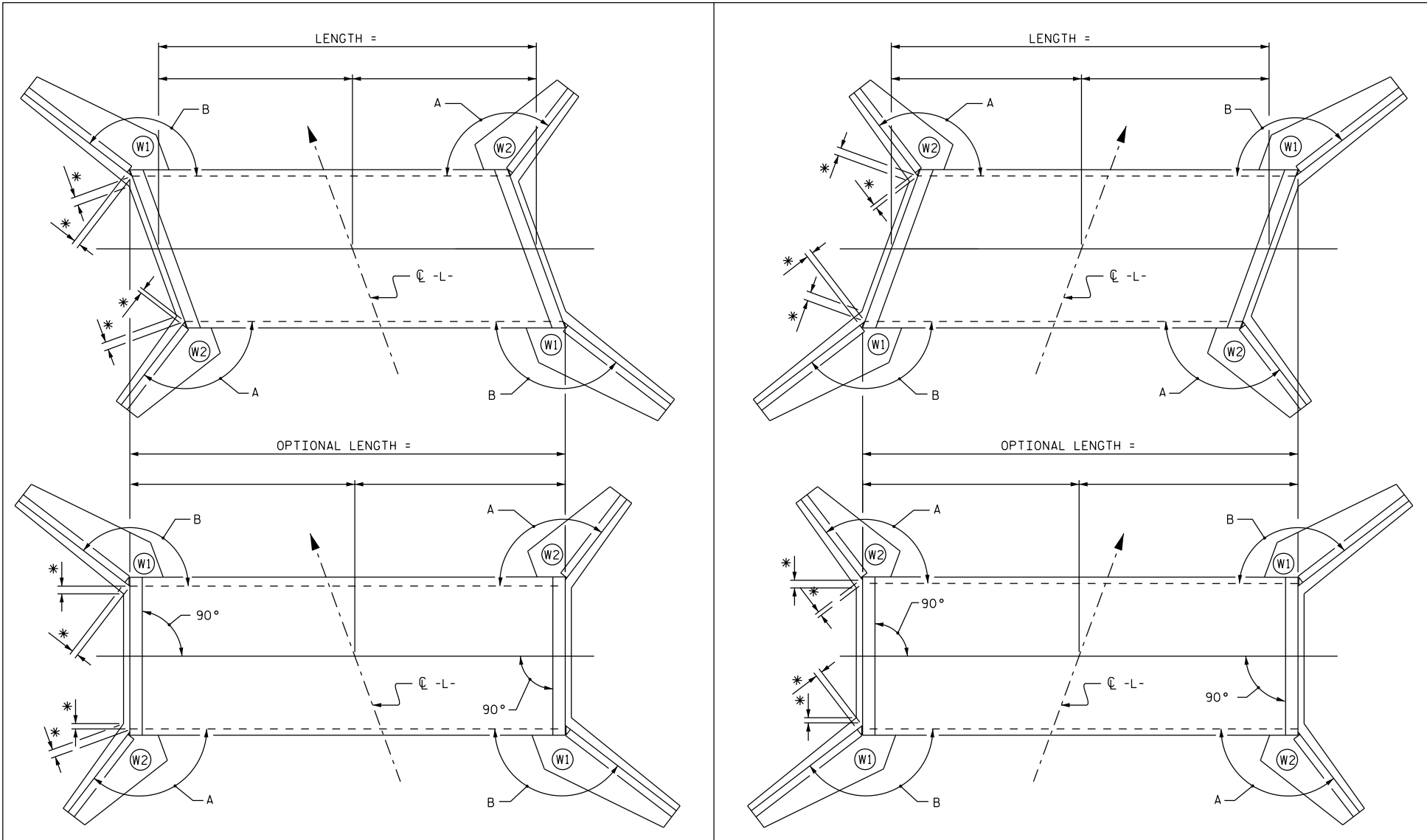


FIGURE 9 - 7



THE CONTRACTOR, AT HIS OPTION, MAY USE ENDS OF PRECAST BOX AT 90° SKEW WITH OPTIONAL LENGTH AS SHOWN. ANY ADDITIONAL COST DUE TO THE USE OF THE OPTION WILL BE PAID FOR BY THE CONTRACTOR.

ANGLES "A" AND "B" SHALL BE MAINTAINED.

\* DIMENSIONS THAT VARY BETWEEN SKEWED END PRECAST BOX AND 90° END PRECAST BOX.

ADD NOTE TO PLANS:

IF THE OPTION OF 90° SKEWED ENDS OF THE PRECAST BOX IS USED, DIMENSIONS MARKED WITH AN ASTERISK WILL NEED ADJUSTMENT.