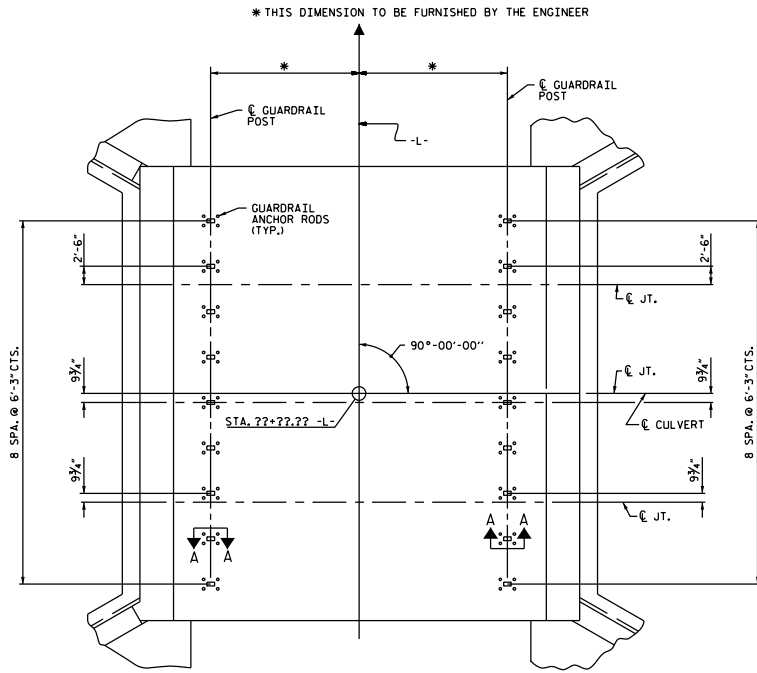


FIGURE 9 - 17



EXAMPLE

PLAN OF PRECAST CULVERT
GUARDRAIL ANCHOR ASSEMBLY SPACING

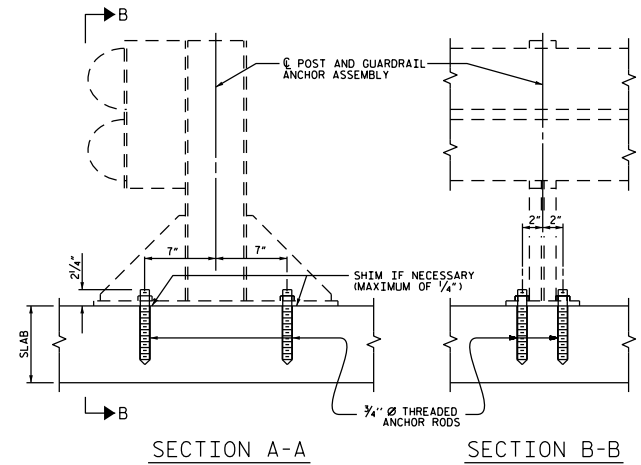
NOTE: GUARDRAIL POSTS PLACEMENT AS SHOWN.
GUARDRAIL POSTS AND THREADED ANCHOR RODS
MUST CLEAR ALL JOINTS OF PRECAST CONCRETE
CULVERT UNITS.

NOTES

ALL GUARDRAIL ATTACHMENTS SHALL BE MADE USING ADHESIVELY ANCHORED ANCHOR BOLTS. LEVEL TWO FIELD TESTING IS REQUIRED, AND THE YIELD LOAD OF THE 3/4" Ø BOLT IS 12.8 KIPS. FOR ADHESIVELY ANCHORED ANCHOR BOLTS OR DOWELS, SEE STANDARD SPECIFICATIONS.

ANCHOR BOLTS, NUTS, AND WASHERS SHALL BE 3/4" Ø AND MEET THE REQUIREMENTS OF ASTM A325. BOLTS, NUTS, AND WASHERS SHALL BE GALVANIZED.

PAYMENT FOR GUARDRAIL, POST, AND POST BASE PLATES IS INCLUDED IN ROADWAY PAY ITEMS.



SECTION A-A

SECTION B-B

PROJECT NO. _____
_____ COUNTY
STATION: _____
SHEET _____ OF _____

STATE OF NORTH CAROLINA
DEPARTMENT OF TRANSPORTATION
RAILROAD
STANDARD
ANCHORAGE DETAILS FOR
GUARDRAIL ATTACHMENTS
FOR PRECAST CULVERTS

ASSEMBLED BY : _____	DATE : _____
CHECKED BY : _____	DATE : _____
DRAWN BY : FCJ 6/88	REV. 5/1/08 KMA/GM
CHECKED BY : ARB 6/88	REV. 10/1/18 MAA/GM
	REV. 12/17 MAA/THC

DOCUMENT NOT CONSIDERED
FINAL UNLESS ALL
SIGNATURES COMPLETED

REVISIONS						SHEET NO.	
NO.	BY:	DATE:	NO.	BY:	DATE:	S-	TOTAL SHEETS
1			3				
2			4				