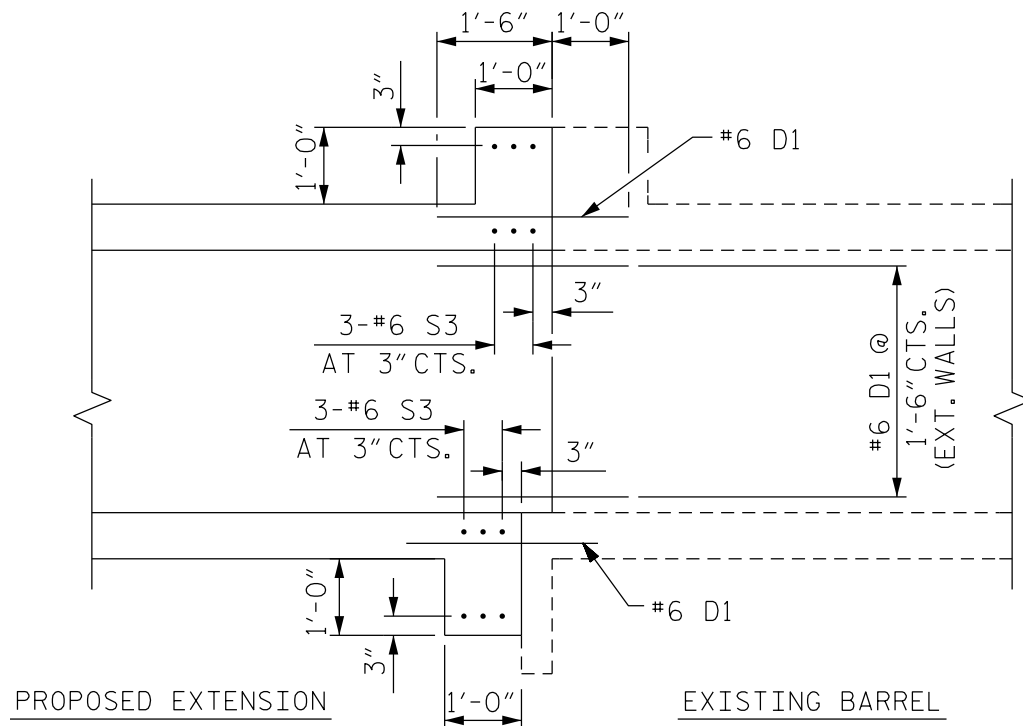


### SINGLE BARREL CULVERT



### MULTIPLE BARREL CULVERT

### EDGE BEAMS FOR CULVERT EXTENSIONS

1. NO EDGE BEAM REQUIRED FOR EXTENSIONS WITH 90° HEADWALLS.
2. FOR SINGLE BARREL EXTENSIONS WITH SKEWED HEADWALLS, USE 1'-0" X 1'-0" EDGE BEAMS WITH 3-#8 BARS IN BOTTOM OF TOP EDGE BEAM AND 3-#8 BARS IN TOP OF BOTTOM EDGE BEAM.
3. FOR MULTIPLE BARREL EXTENSIONS WITH SKEWED HEADWALLS, USE 1'-0" X 1'-0" EDGE BEAMS WITH 3-#6 BARS IN TOP AND BOTTOM OF BOTH TOP AND BOTTOM EDGE BEAMS.

**FIGURE 9 - 18**