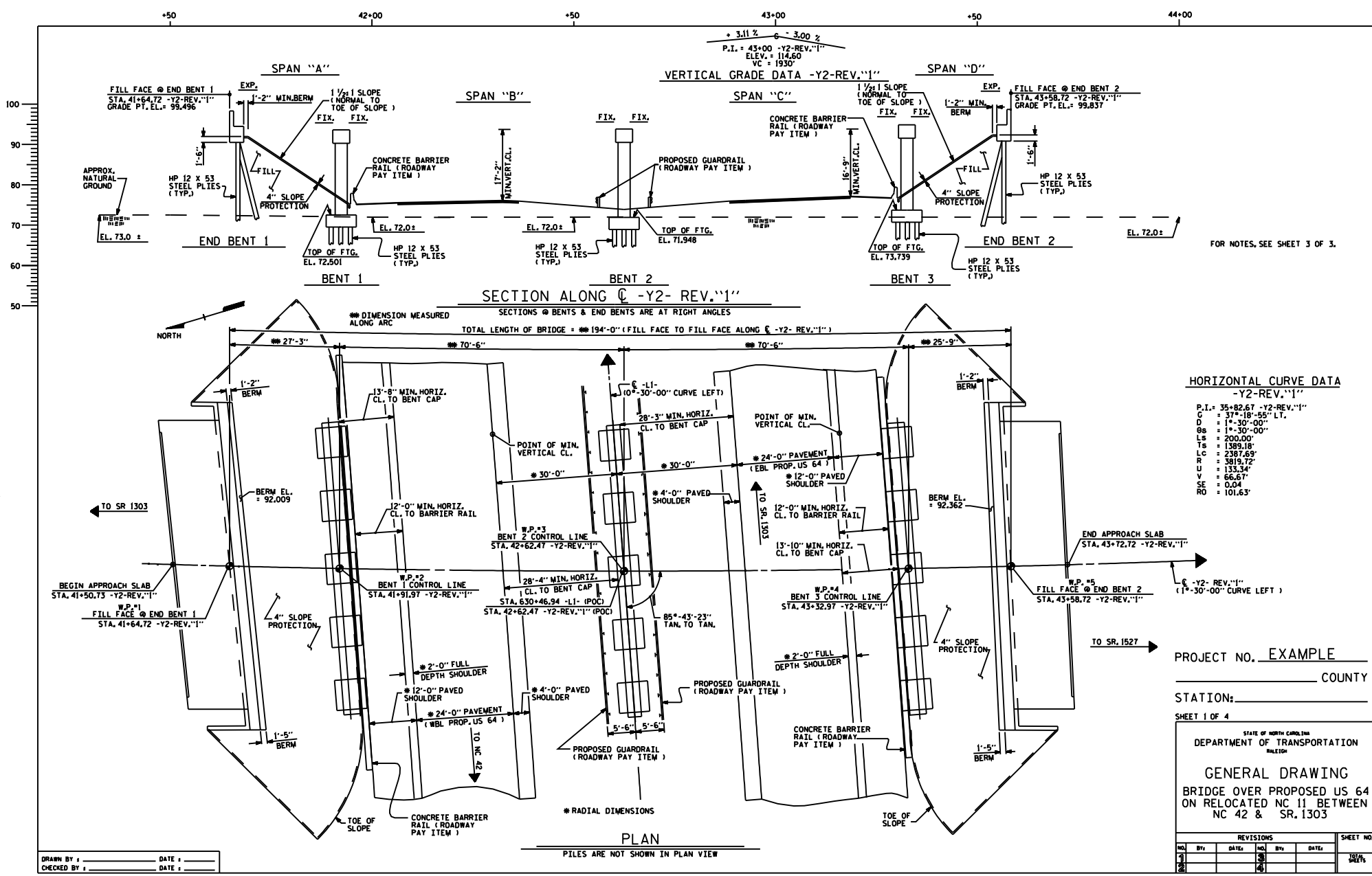


FIGURE 5 - 1



FOR NOTES, SEE SHEET 3 OF 3.

PROJECT NO. EXAMPLE

COUNTY _____

STATION: _____

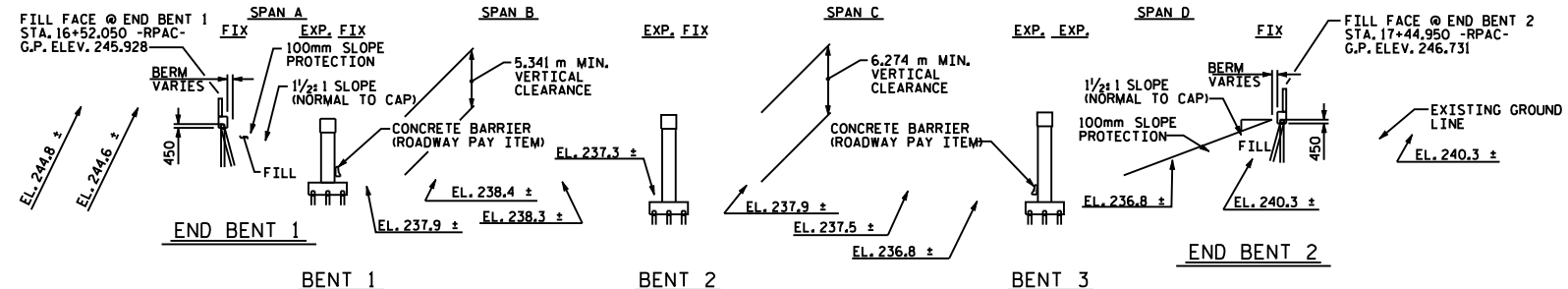
SHEET 1 OF 4

STATE OF NORTH CAROLINA
DEPARTMENT OF TRANSPORTATION
RALEIGH

GENERAL DRAWING
BRIDGE OVER PROPOSED US 64
ON RELOCATED NC 11 BETWEEN
NC 42 & SR. 1303

NO.		DATE		NO.		DATE		SHEET NO.	
1	2	3	4	5	6	7	8	9	10
1				3					
2				4					

3.8679 % Δ -1.6059 %
GRADE DATA
 P.I. STA. = 16+80,000 -RPAC-
 ELEV. = 248.900
 V.C. = 380.0 m

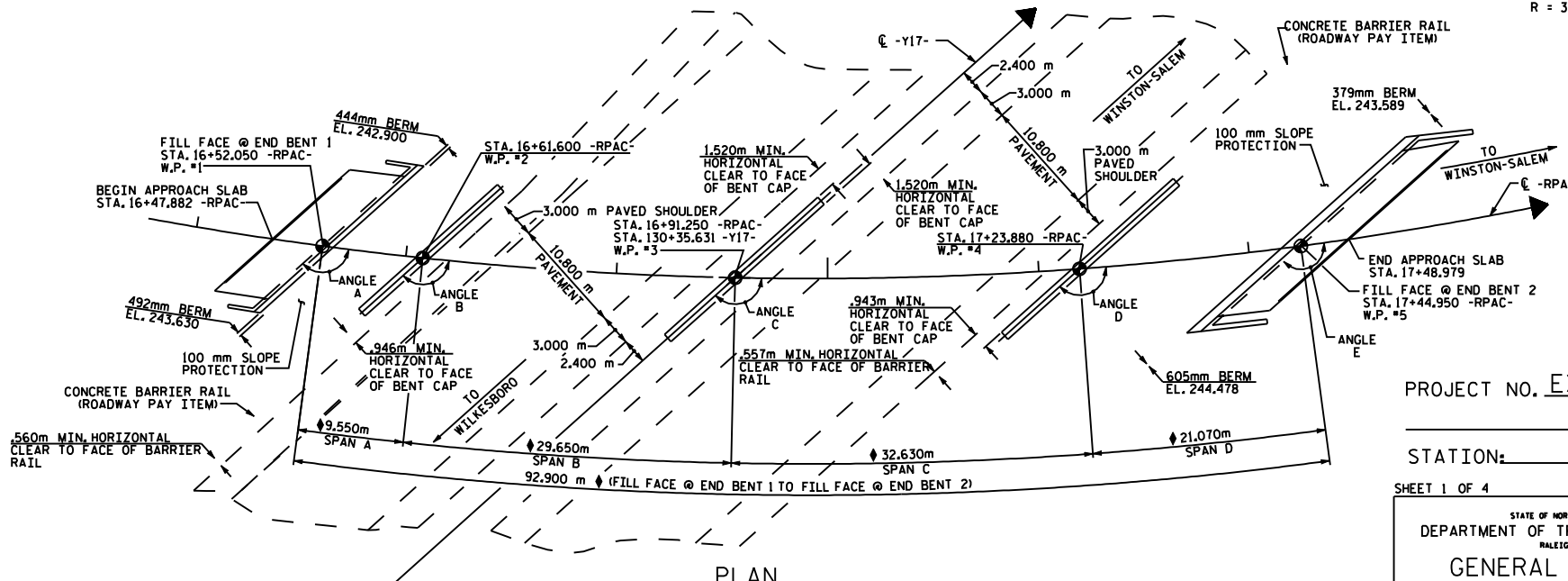


TOP OF FOOTING ELEVATIONS

	BENT 1	BENT 2	BENT 3
FOOTING 1	238.146	236.375	236.375
FOOTING 2	238.330	236.572	236.588
FOOTING 3	238.515	236.770	236.802
FOOTING 4	238.699	236.967	237.016

HORIZONTAL CURVE DATA
 P.I. STA. = 16+61.433 -RPAC-
 Δ = 32°-00'-00" (L.T.)
 L = 195.477 m
 T = 100.361 m
 R = 350.000 m

FIGURE 5 - 1 M



ANGLE TANGENT TO CURVE

ANGLE	TANGENT TO CURVE
A	130°-33'-06"
B	132°-06'-55"
C	136°-58'-08"
D	142°-18'-38"
E	145°-45'-34"

DRAWN BY : _____ DATE : _____
 CHECKED BY : _____ DATE : _____

PROJECT NO. EXAMPLE
 _____ COUNTY
 STATION: _____
 SHEET 1 OF 4

STATE OF NORTH CAROLINA
 DEPARTMENT OF TRANSPORTATION
 RALEIGH
GENERAL DRAWING
 BRIDGE ON RAMP AC
 OVER US 421 BETWEEN
 YADKINVILLE AND
 WINSTON SALEM

REVISIONS						SHEET NO.
NO.	BY	DATE	NO.	BY	DATE	
1			3			TOTAL SHEETS
2			4			



DATE