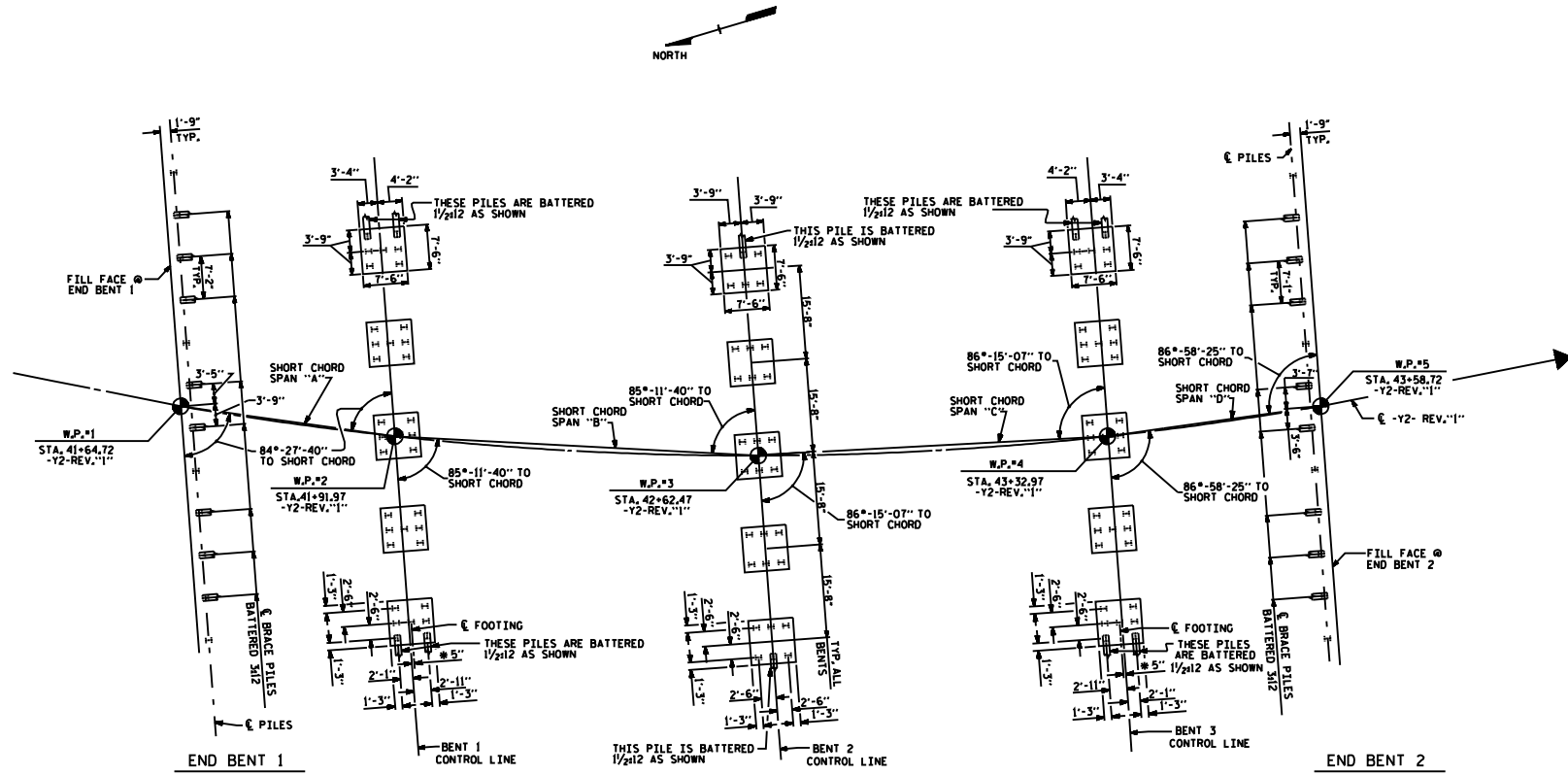


FIGURE 5 - 2



FOUNDATION LAYOUT PLAN
ALL PILES ARE HP 12 X 53 STEEL PILES

* BENT 1
DIMENSIONS & PILE LAYOUT ARE TYPICAL FOR EACH FOOTING (EXCEPT AS NOTED).

BENT 2
DIMENSIONS & PILE LAYOUT ARE TYPICAL FOR EACH FOOTING (EXCEPT AS NOTED).

* BENT 3
DIMENSIONS & PILE LAYOUT ARE TYPICAL FOR EACH FOOTING (EXCEPT AS NOTED).

* NOTE:
THE CONTRACTOR'S ATTENTION IS CALLED TO THE FACT THAT THE BENT CONTROL LINE IS OFFSET FROM THE CENTERLINE OF THE BENT.

DRAWN BY : _____ DATE : _____
CHECKED BY : _____ DATE : _____

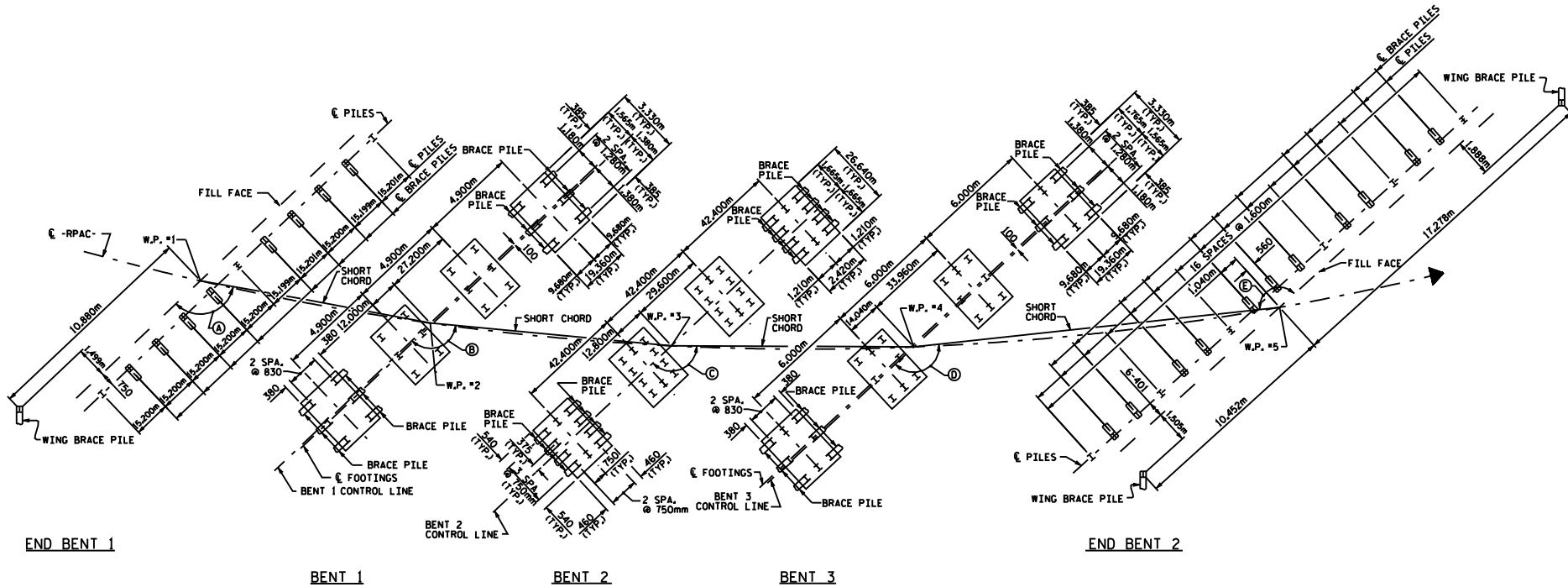
PROJECT NO. EXAMPLE COUNTY _____
STATION: _____
SHEET 2 OF 5

STATE OF NORTH CAROLINA
DEPARTMENT OF TRANSPORTATION
RALEIGH

GENERAL DRAWING
BRIDGE OVER PROPOSED US 64
ON RELOCATED NC 11 BETWEEN
NC 42 & SR. 1303

| REVISIONS | | | | SHEET NO. | |
|-----------|----|------|-----|-----------|------|
| NO. | BY | DATE | NO. | BY | DATE |
| 1 | | | 2 | | |
| 2 | | | 4 | | |

FIGURE 5 - 2 M



FOUNDATION LAYOUT

BRACE PILES @ END BENTS ARE TO BE BATTERED @ 250/1000.
 BRACE PILES @ INTERIOR BENTS ARE TO BE BATTERED @ 125/1000.
 DIMENSIONS LOCATING PILES ARE TO PILE CENTERLINES.
 ALL PILES ARE HP 310 x 79 STEEL PILES.

THE CONTRACTORS ATTENTION IS CALLED TO THE FACT THAT THE BENT CONTROL LINE IS OFFSET FROM THE CENTERLINE FOOTINGS AT BENTS 1 AND 3.

| WORK POINT | STATION | ANGLE | ANGLE TO SHORT CHORD |
|------------|------------------|-------|----------------------|
| 1 | 16+52.050 -RPAC- | A | 132°-20'-00" |
| 2 | 16+61.600 -RPAC- | B | 134°-32'-32" |
| 3 | 16+91.250 -RPAC- | C | 139°-38'-23" |
| 4 | 17+23.880 -RPAC- | D | 144°-02'-07" |
| 5 | 17+44.950 -RPAC- | E | 144°-02'-05" |

PROJECT NO. EXAMPLE
 _____ COUNTY
 STATION: _____
 SHEET 2 OF 4

STATE OF NORTH CAROLINA
 DEPARTMENT OF TRANSPORTATION
 DIVISION
GENERAL DRAWING
 BRIDGE ON RAMP AC
 OVER US 421 BETWEEN
 YADKINVILLE AND
 WINSTON-SALEM

DRAWN BY : _____ DATE : _____
 CHECKED BY : _____ DATE : _____

| REVISIONS | | | | SHEET NO. | |
|-----------|----|------|-----|-----------|------|
| NO. | BY | DATE | NO. | BY | DATE |
| 1 | | | 3 | | |
| 2 | | | 4 | | |