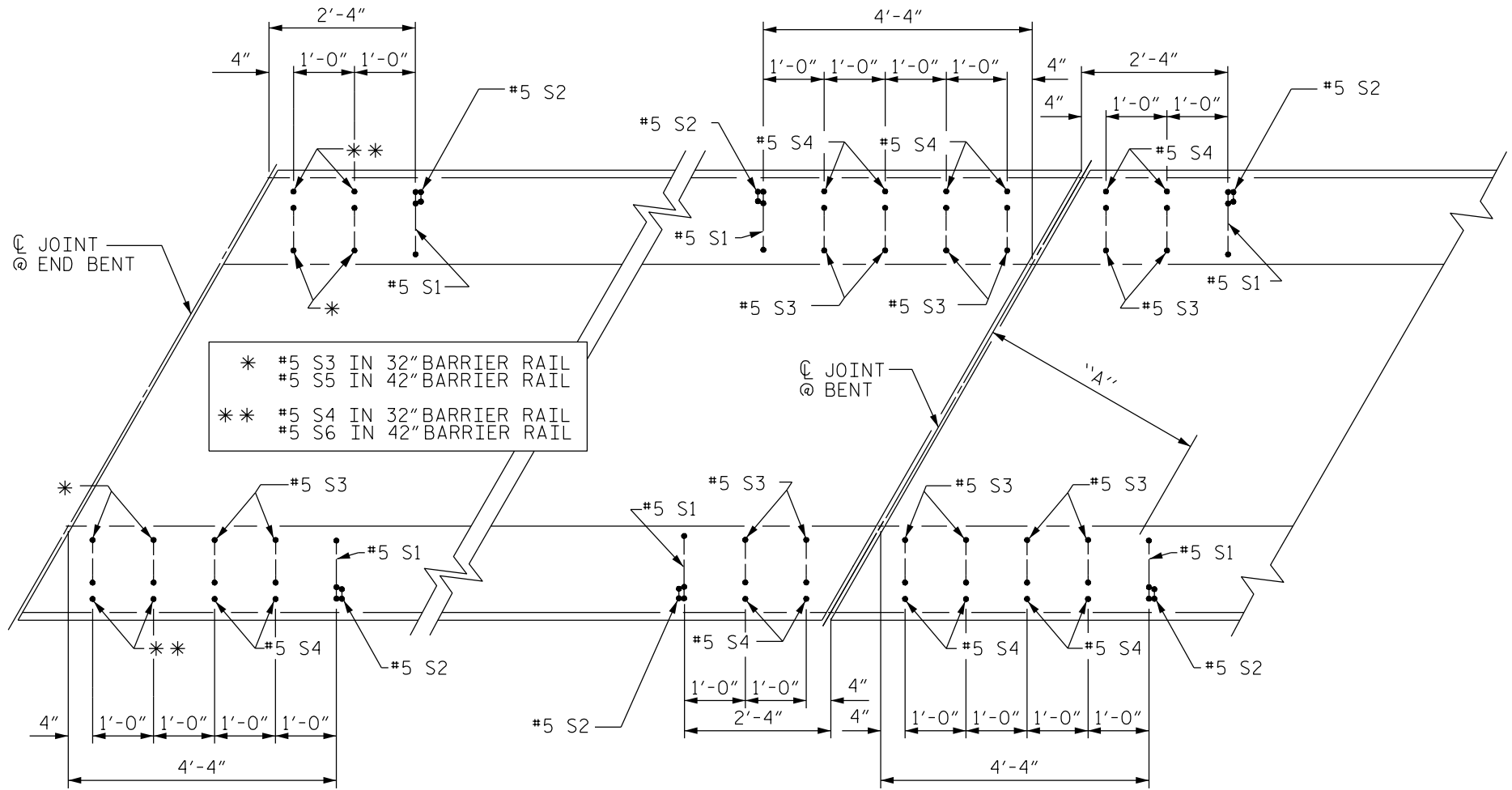


FIGURE 6 - 25



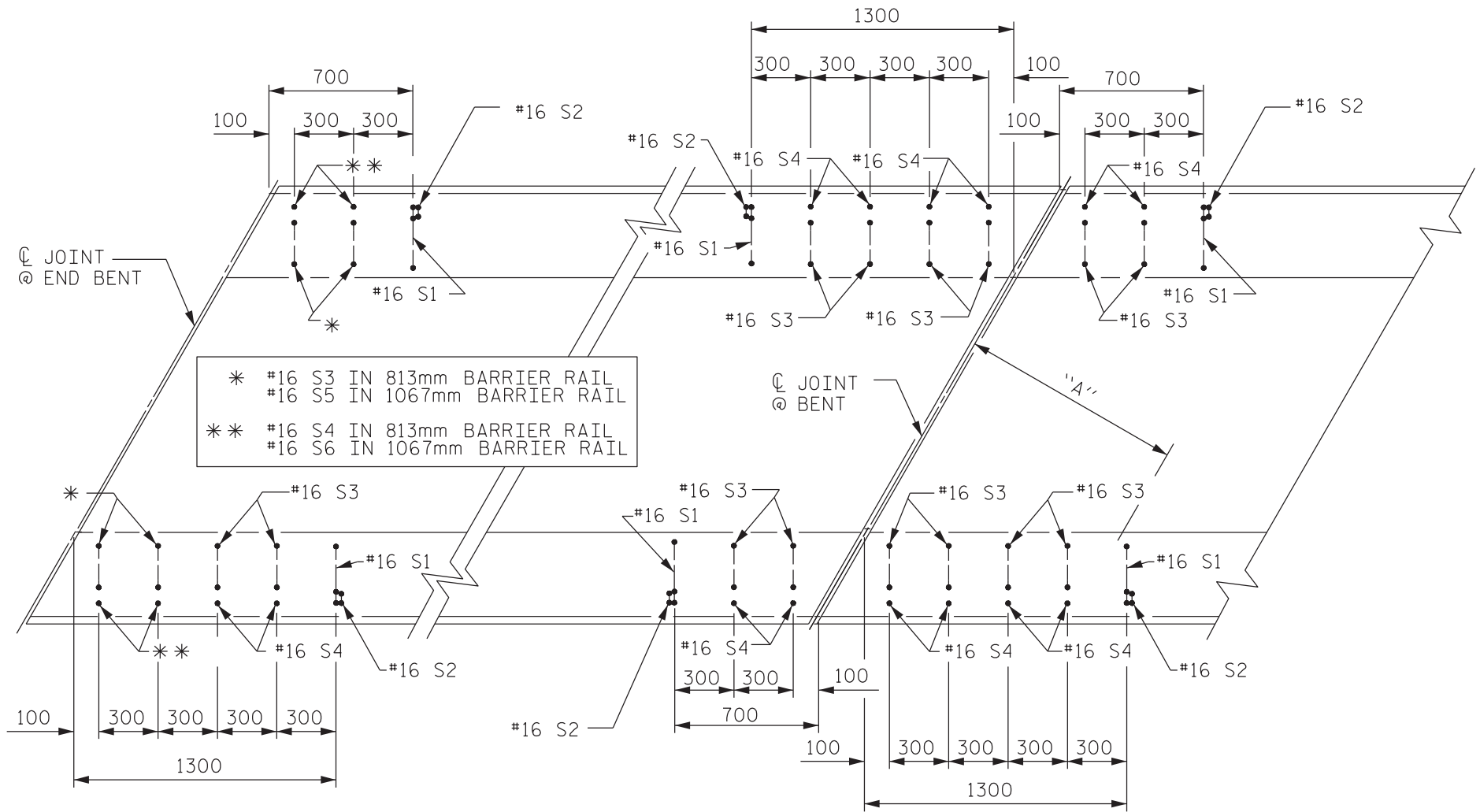
NOTE TO DETAILER:

IN ORDER TO GET PROPER CLEARANCE FOR SAWING THE JOINT, THE FIRST #5 S1 STIRRUP IN THE BARRIER RAIL SHOULD BE LOCATED AT LEAST 4'-4" FROM THE  $\text{C}$  OF JOINT FOR THE LEFT SIDE OF THE BLADE, AND AT LEAST 2'-4" FROM THE  $\text{C}$  OF JOINT FOR THE RIGHT SIDE OF THE BLADE (VIEWING THE BARRIER RAIL FROM THE GUTTERLINE). THESE DIMENSIONS SHOULD WORK IN THE MAJORITY OF CASES. FOR SPECIAL CASES, THESE DIMENSIONS SHOULD BE CHECKED BASED ON DIMENSION "A" = 3'-0" NORMAL TO THE JOINT AS A MINIMUM.

LOCATION OF ADHESIVELY ANCHORED DOWELS FOR BARRIER RAILS

(ONLY WHEN FOAM JOINT SEAL IS USED)

FIGURE 6 - 25 M



NOTE TO DETAILER:

IN ORDER TO GET PROPER CLEARANCE FOR SAWING THE JOINT, THE FIRST #16 S1 STIRRUP IN THE BARRIER RAIL SHOULD BE LOCATED AT LEAST 1.300m FROM THE  $\text{Q}$  OF JOINT FOR THE LEFT SIDE OF THE BLADE, AND AT LEAST 700mm FROM THE  $\text{Q}$  OF JOINT FOR THE RIGHT SIDE OF THE BLADE (VIEWING THE BARRIER RAIL FROM THE GUTTERLINE). THESE DIMENSIONS SHOULD WORK IN THE MAJORITY OF CASES. FOR SPECIAL CASES, THESE DIMENSIONS SHOULD BE CHECKED BASED ON DIMENSION "A" = 900mm NORMAL TO THE JOINT AS A MINIMUM.

LOCATION OF ADHESIVELY ANCHORED DOWELS FOR BARRIER RAILS

(ONLY WHEN FOAM JOINT SEAL IS USED)