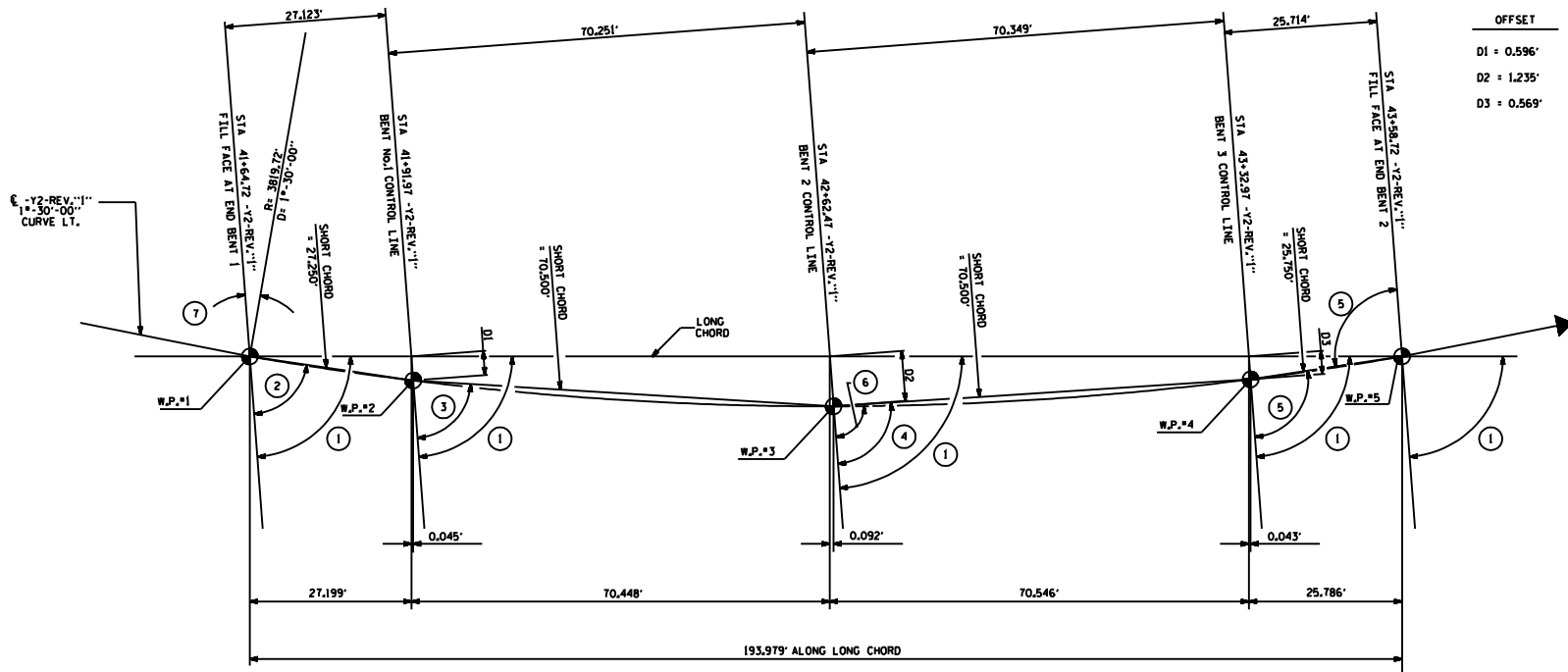


FIGURE 5 - 3



NOTE: ALL BENTS ARE PARALLEL.

LONG CHORD LAYOUT

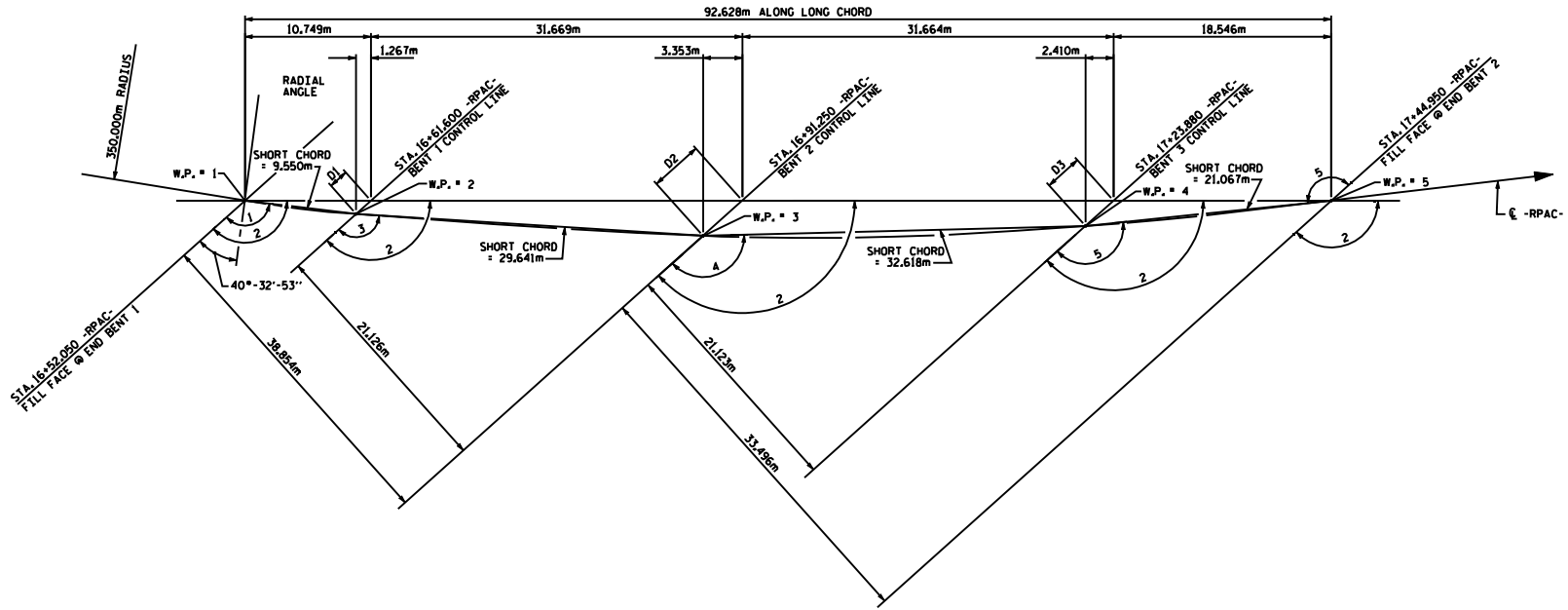
PROJECT NO. EXAMPLE COUNTY _____
 STATION: _____
 SHEET 3 OF 4

STATE OF NORTH CAROLINA
 DEPARTMENT OF TRANSPORTATION
 RALEIGH
 GENERAL DRAWING
 BRIDGE OVER PROPOSED US 64
 ON RELOCATED NC 11 BETWEEN
 NC 42 & SR. 1303

REVISIONS				SHEET NO.
NO.	BY:	DATE:	NO.	DATE:
1			3	
2			4	

DRAWN BY: _____ DATE: _____
 CHECKED BY: _____ DATE: _____

FIGURE 5 - 3 M



LONG CHORD LAYOUT

ALL BENTS ARE PARALLEL

ANGLES	
1	131°-20'-00"
2	138°-09'-21"
3	134°-32'-32"
4	139°-38'-23"
5	144°-02'-06"

OFFSETS	
D1=	1.701m
D2=	4.501m
D3=	3.235m

PROJECT NO. EXAMPLE
 COUNTY _____
 STATION: _____

SHEET 3 OF 4

STATE OF NORTH CAROLINA
 DEPARTMENT OF TRANSPORTATION
 RALEIGH

GENERAL DRAWING

BRIDGE ON RAMP AC
 OVER US 421 BETWEEN
 YADKINVILLE AND
 WINSTON-SALEM

DRAWN BY: _____ DATE: _____
 CHECKED BY: _____ DATE: _____

REVISIONS						SHEET NO.
NO.	BY:	DATE:	NO.	BY:	DATE:	SHEETS
1			3			
2			4			