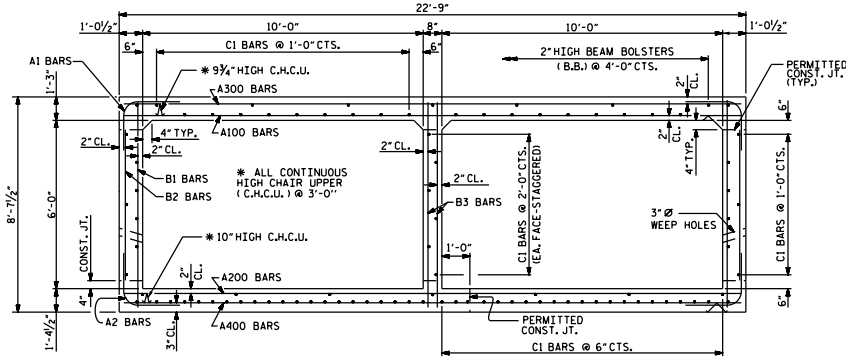
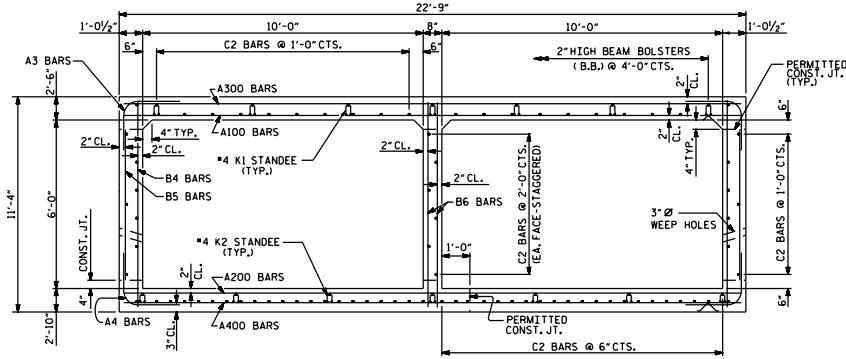


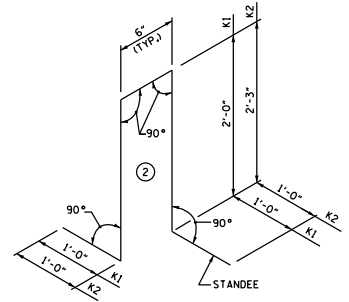
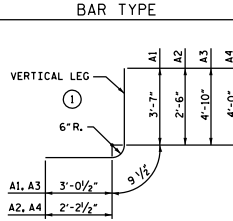
FIGURE 10 - 14



RIGHT ANGLE SECTION A-A
THERE ARE 96 "C1" BARS IN SECTION OF BARREL



RIGHT ANGLE SECTION B-B
THERE ARE 96 "C2" BARS IN SECTION OF BARREL



SPLICE LENGTH CHART

BAR	SIZE	SPLICE LENGTH

BILL OF MATERIAL

BAR NO.	SIZE	TYPE	LENGTH	WEIGHT
A1	316	#4	1 7'-5"	1566
A2	316	#4	1 5'-6"	1161
A3	1646	#4	1 8'-8"	9529
A4	1646	#4	1 7'-0"	7697
A100	1087	#5	STR 22'-4"	25320
A101	6	#5	STR 18'-1"	119
A102	6	#5	STR 15'-4"	96
A103	6	#5	STR 11'-7"	72
A104	6	#5	STR 7'-10"	49
A105	6	#5	STR 4'-1"	26
A200	791	#5	STR 22'-4"	18425
A201	4	#5	STR 19'-2"	80
A202	4	#5	STR 15'-9"	66
A203	4	#5	STR 12'-4"	51
A204	4	#5	STR 8'-11"	37
A205	4	#5	STR 5'-6"	23
A206	4	#5	STR 2'-1"	9
A300	967	#4	STR 22'-4"	14426
A301	4	#4	STR 19'-6"	52
A302	4	#4	STR 16'-8"	45
A303	4	#4	STR 13'-11"	37
A304	4	#4	STR 11'-1"	30
A305	4	#4	STR 8'-4"	22
A306	4	#4	STR 5'-6"	15
A307	4	#4	STR 2'-9"	7
A400	967	#5	STR 22'-4"	22525
A401	4	#5	STR 19'-6"	81
A402	4	#5	STR 16'-8"	70
A403	4	#5	STR 13'-11"	58
A404	4	#5	STR 11'-1"	46
A405	4	#5	STR 8'-4"	35
A406	4	#5	STR 5'-6"	23
A407	4	#5	STR 2'-9"	11
B1	128	#4	STR 8'-1"	691
B2	316	#4	STR 5'-4"	1126
B3	160	#4	STR 8'-1"	864
B4	644	#4	STR 10'-10"	4660
B5	1646	#4	STR 5'-4"	5864
B6	824	#4	STR 10'-10"	5963
C1	384	#4	STR 18'-6"	4745
C2	1056	#4	STR 29'-10"	21045
D1	6	#6	STR 2'-10"	26
D2	39	#6	STR 1'-10"	107
G1	8	#5	STR 23'-2"	193
K1	714	#4	2 6'-6"	3100
K2	714	#4	2 7'-0"	3339
S2	12	#8	STR 23'-2"	742
REINFORCING STEEL -				LBS. 154274

DRAWN BY: _____ DATE: _____
 CHECKED BY: _____ DATE: _____
 DESIGN ENGINEER OF RECORD: _____ DATE: _____

PROJECT NO. EXAMPLE
 _____ COUNTY
 STATION: _____

SHEET 5 OF 8
 STATE OF NORTH CAROLINA
 DEPARTMENT OF TRANSPORTATION
 RALEIGH
 DOUBLE 10 FT. X 6 FT.
 CONCRETE BOX CULVERT
 100° SKEW

REVISIONS

NO.	BY	DATE	NO.	BY	DATE
1			3		
2			4		

SHEET NO. 3878