

NOTES

ASSUMED LIVE LOAD ----- HL-93 OR ALTERNATE LOADING.
 DESIGN FILL-----
 FOR OTHER DESIGN DATA AND NOTES SEE STANDARD NOTE SHEET.
 3"Ø WEEP HOLES INDICATED TO BE IN ACCORDANCE WITH THE SPECIFICATIONS.
 CONCRETE IN CULVERTS TO BE POURED IN THE FOLLOWING ORDER:

1. WING FOOTINGS AND FLOOR SLAB INCLUDING 4" OF ALL VERTICAL WALLS.
2. THE REMAINING PORTIONS OF THE WALLS AND WINGS FULL HEIGHT FOLLOWED BY ROOF SLAB AND HEADWALLS.

THE RESIDENT ENGINEER SHALL CHECK THE LENGTH OF CULVERT BEFORE STAKING IT OUT TO MAKE CERTAIN THAT IT WILL PROPERLY TAKE CARE OF THE FILL.

THIS BARREL STANDARD TO BE USED ONLY ON CULVERT ON 120° SKEW AND TO BE USED WITH STANDARD WING SHEET WITH THE SAME SKEW AND VERTICAL CLEARANCE.

DIMENSIONS FOR WING LAYOUT AS WELL AS ADDITIONAL REINFORCING STEEL EMBEDDED IN BARREL ARE SHOWN ON WING SHEET.

TRANSVERSE CONSTRUCTION JOINTS SHALL BE USED IN THE BARREL, SPACED TO LIMIT THE POURS TO A MAXIMUM OF 70 FT. LOCATION OF JOINTS SHALL BE SUBJECT TO APPROVAL OF THE ENGINEER.

AT THE CONTRACTOR'S OPTION, HE MAY SPLICE THE VERTICAL REINFORCING STEEL IN THE INTERIOR FACE OF EXTERIOR WALL ABOVE LOWER WALL CONSTRUCTION JOINT. THE SPLICE LENGTH SHALL BE AS PROVIDED IN THE SPLICE LENGTH CHART SHOWN ON THE PLANS. EXTRA WEIGHT OF STEEL DUE TO THE SPLICES SHALL BE PAID FOR BY THE CONTRACTOR.

AT THE CONTRACTOR'S OPTION HE MAY SUBMIT, TO THE ENGINEER FOR APPROVAL, DESIGN AND DETAIL DRAWINGS FOR A PRECAST REINFORCED CONCRETE BOX CULVERT IN LIEU OF THE CAST-IN-PLACE CULVERT SHOWN ON THE PLANS. THE DESIGN SHALL PROVIDE THE SAME SIZE AND NUMBER OF BARRELS AS USED ON THE CAST-IN-PLACE DESIGN. FOR OPTIONAL PRECAST REINFORCED CONCRETE BOX CULVERT, SEE SPECIAL PROVISIONS.

LOCATION SKETCH

| TOTAL STRUCTURE QUANTITIES | |
|-------------------------------|----------|
| CLASS A CONCRETE | |
| BARREL @ _____ - CY/FT _____ | - C.Y. |
| WINGS ETC. _____ | - C.Y. |
| TOTAL _____ | - C.Y. |
| REINFORCING STEEL | |
| BARREL _____ | - LBS. |
| WINGS ETC. _____ | - LBS. |
| TOTAL _____ | - LBS. |
| CULVERT EXCAVATION | LUMP SUM |
| FOUNDATION COND. MATERIAL | - TONS |
| REMOVAL OF EXISTING STRUCTURE | LUMP SUM |

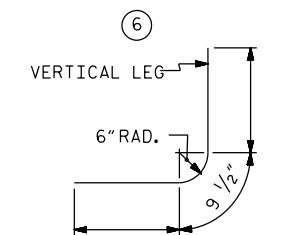
PROJECT NO. _____

_____ COUNTY

STATION: _____

SHEET 1 OF 2

STATE OF NORTH CAROLINA
 DEPARTMENT OF TRANSPORTATION
 RALEIGH
 BARREL STANDARD
 SINGLE FT. X FT.
 CONCRETE BOX CULVERT
 120° SKEW



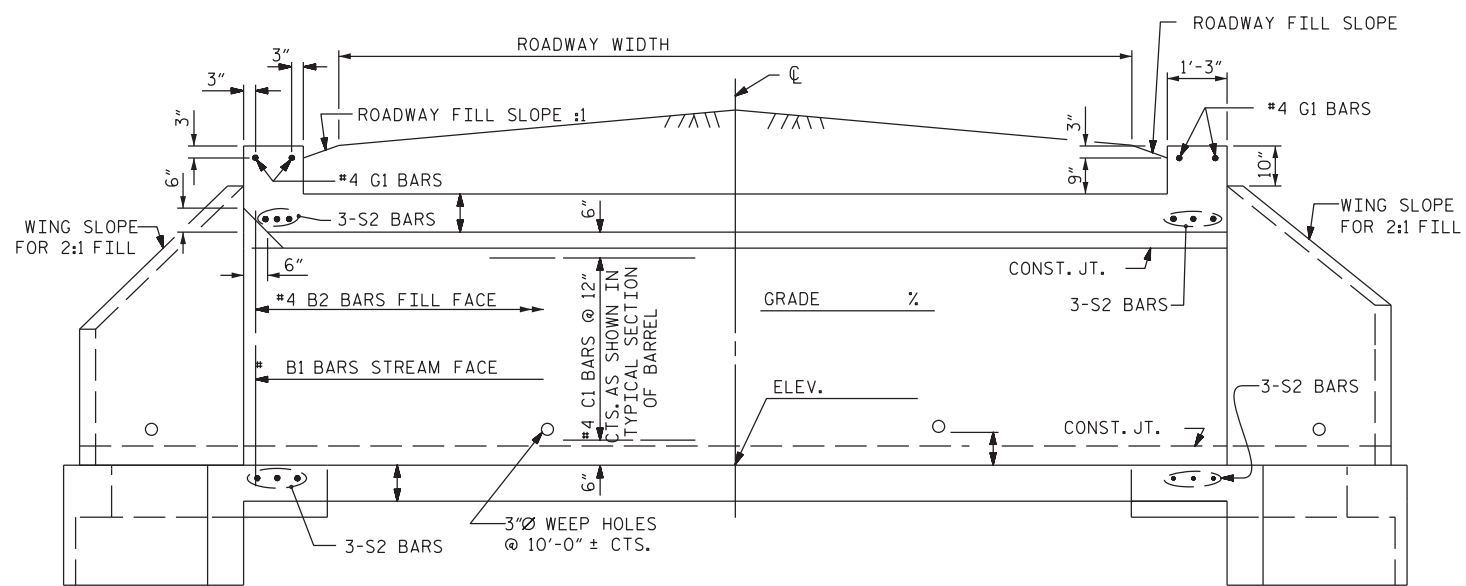
BAR TYPE
 DIMENSIONS ARE OUT TO OUT

PROFILE ALONG CULVERT

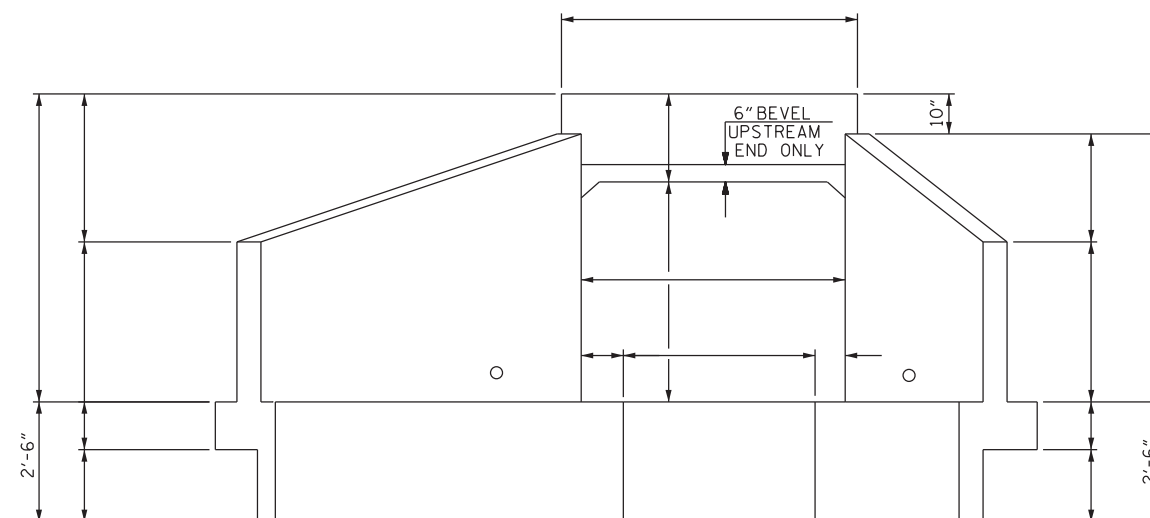
| | | | |
|----------------|----------|-----------|---------|
| ASSEMBLED BY : | - | DATE : | - |
| CHECKED BY : | - | DATE : | - |
| DRAWN BY : | BMM 8/89 | REV. 6/19 | MAA/THC |
| CHECKED BY : | ARB 8/89 | | |

DOCUMENT NOT CONSIDERED FINAL UNLESS ALL SIGNATURES COMPLETED

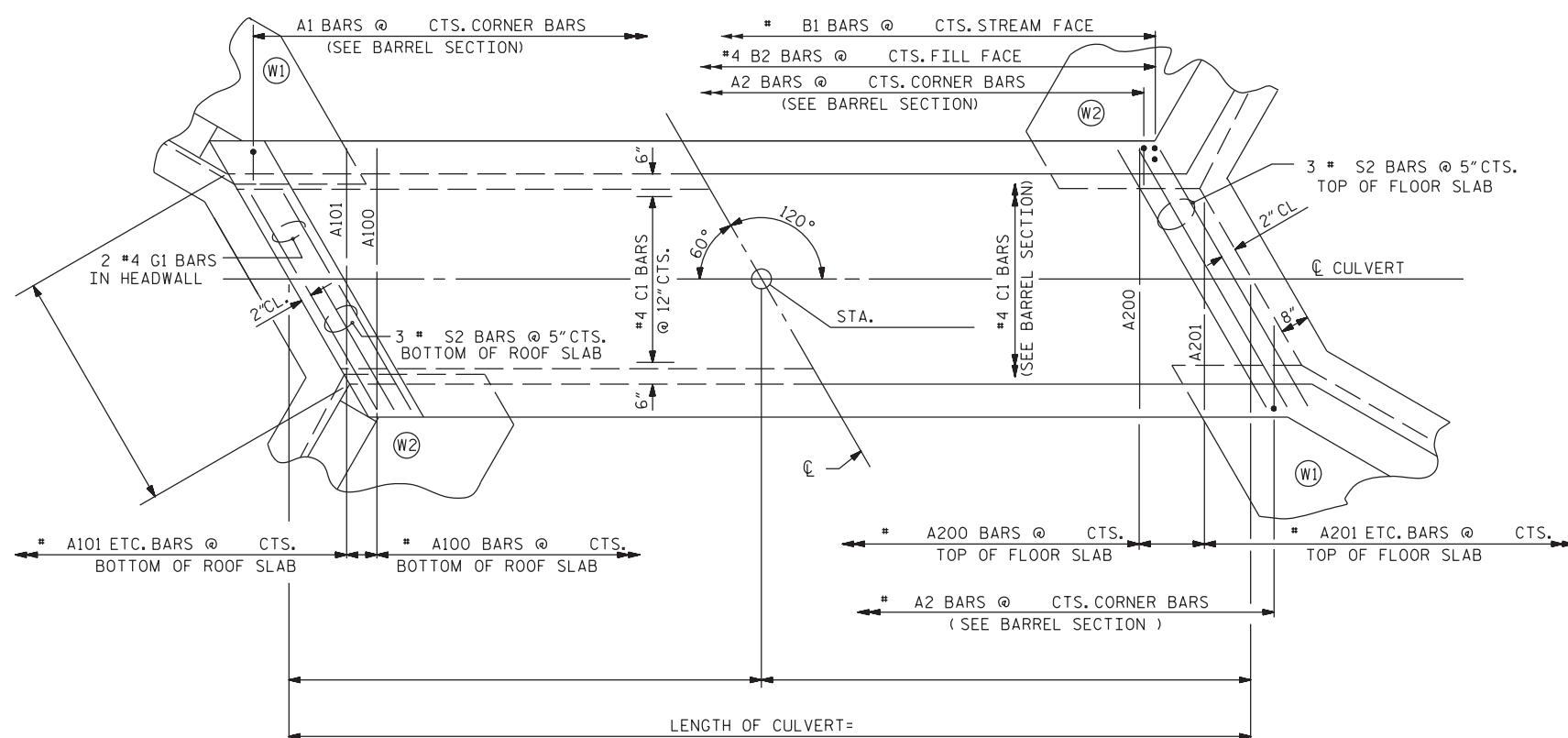
| REVISIONS | | | | | | SHEET NO. |
|-----------|-----|-------|-----|-----|-------|--------------|
| NO. | BY: | DATE: | NO. | BY: | DATE: | TOTAL SHEETS |
| 1 | | | 3 | | | |
| 2 | | | 4 | | | |



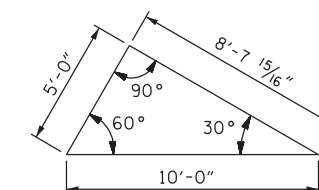
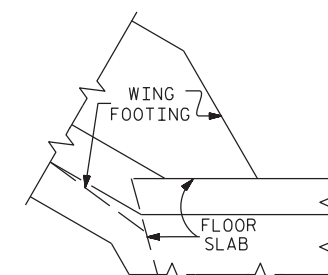
CULVERT SECTION NORMAL TO ROADWAY



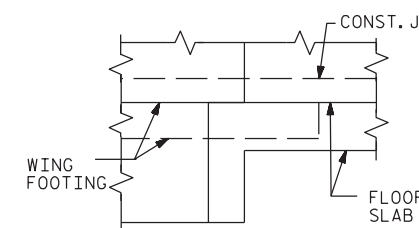
END ELEVATION NORMAL TO SKEW



PART PLAN - ROOF SLAB PART PLAN - FLOOR SLAB



SKEW TRIANGLE



DETAIL

CONNECTION OF WING FOOTING AND FLOOR SLAB WHEN SLAB IS THICKER THAN FOOTING

PROJECT NO. _____

_____ COUNTY

STATION: _____

SHEET 2 OF 2

STATE OF NORTH CAROLINA
DEPARTMENT OF TRANSPORTATION
RALEIGH

BARREL STANDARD
SINGLE FT. X FT.
CONCRETE BOX CULVERT
120° SKEW

| | | | |
|----------------|----------|-----------|---------|
| ASSEMBLED BY : | - | DATE : | - |
| CHECKED BY : | - | DATE : | - |
| DRAWN BY : | JWR 8/89 | REV. 6/19 | MAA/THC |
| CHECKED BY : | ARB 8/89 | | |

DOCUMENT NOT CONSIDERED
FINAL UNLESS ALL
SIGNATURES COMPLETED

| REVISIONS | | | | | | SHEET NO. |
|-----------|-----|-------|-----|-----|-------|--------------|
| NO. | BY: | DATE: | NO. | BY: | DATE: | TOTAL SHEETS |
| 1 | | | 3 | | | |
| 2 | | | 4 | | | |

STD. NO. CB120-1