

# ***Simple Span Projects***

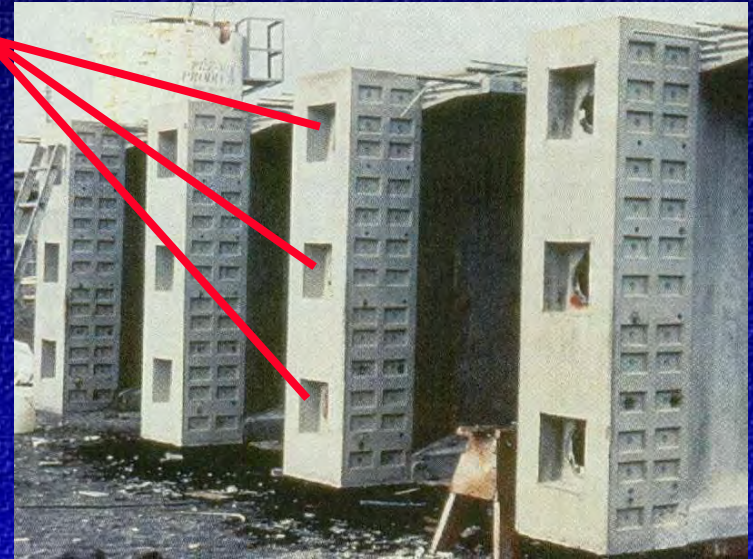
## ***Rock Cut Bridge, WA***

- ***Built in 1995***
- ***3 segments of about 63 ft each for 190 ft total length with 1'-0" closure pours***
- ***Decked bulb-tee section with integral deck, so no field concrete***
- ***Spliced near site, then launched***
- ***Access to site required splicing***
- ***Owners wanted a concrete bridge***
- ***Very tight schedule and budget***

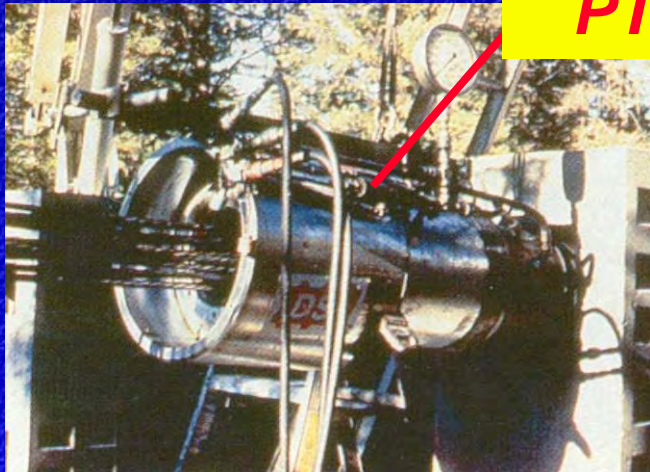
# Rock Cut Bridge, WA



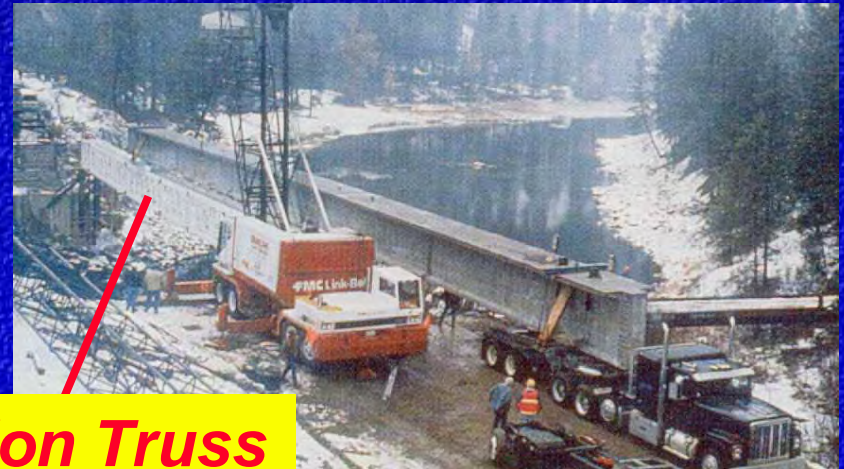
**PT Anchors**



**PT Ducts**



**PT Jack**



**Erection Truss**

# ***Rock Cut Bridge, WA***



*ACEC/NCDOT Spliced Girder Workshop*

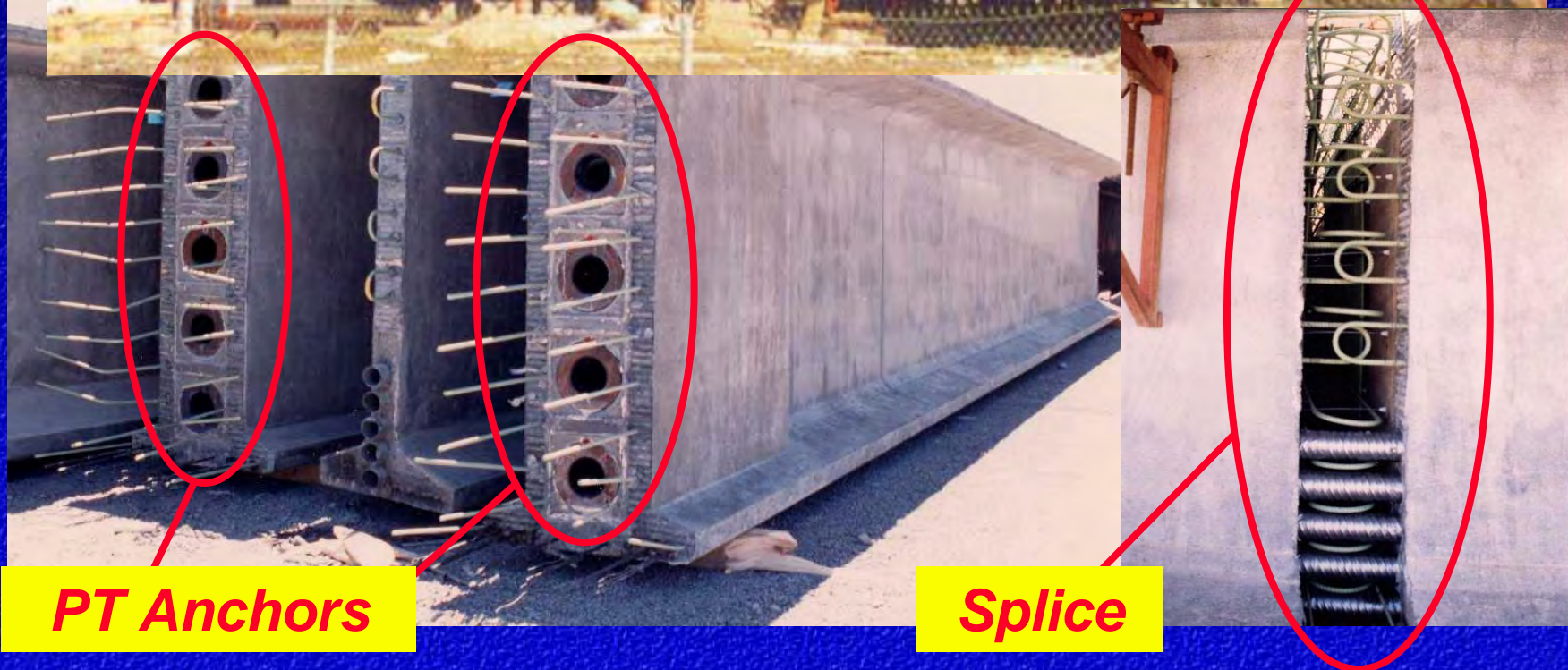
# ***Simple Span Projects***

## ***I-15 Reconstruction, Salt Lake City, UT***

- ***17 bridges built in 1999***
- ***Up to 220 ft total length (SPUIs)***
- ***2.4 m (94.5") deep girders***
- ***3 segments per span***
- ***Erected on falsework***
- ***Spliced concrete girders selected by Design/Build team***

# I-15 Reconstruction, UT

**Temporary Supports  
at Splices**

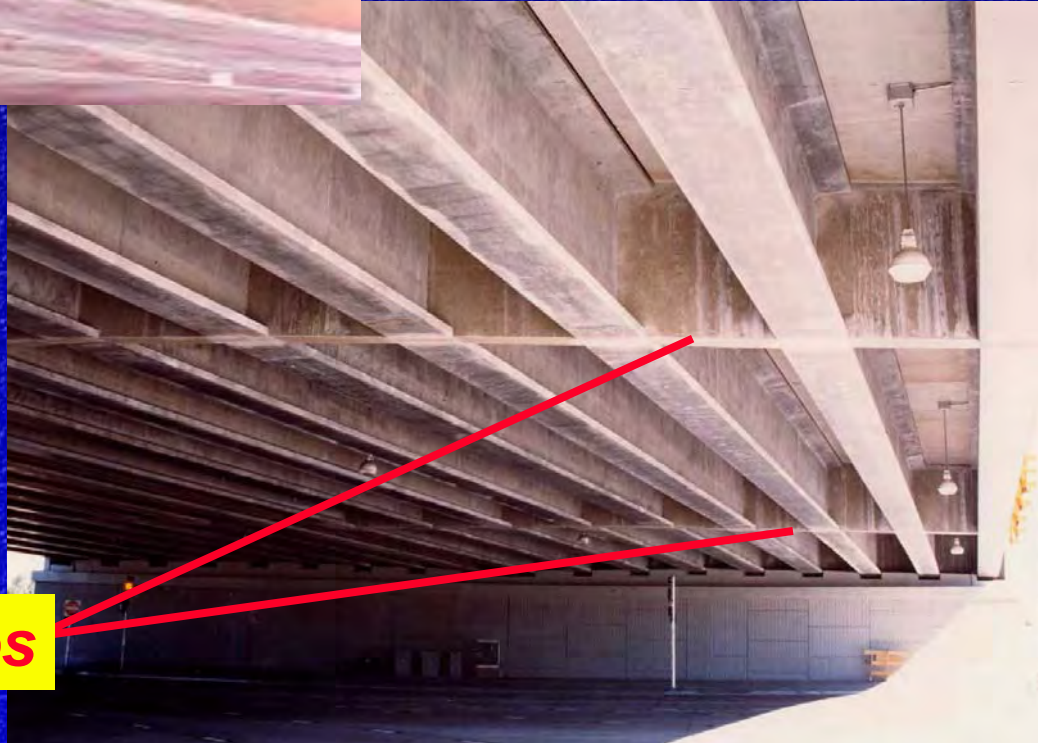


**PT Anchors**

**Splice**

# I-15 Reconstruction, UT

•Continue



**Diaphragm at Splices**